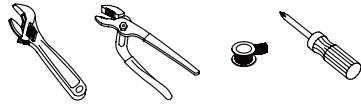


installation

For Models: BFL425

Tools

- Adjustable wrench
- Groove joint plier
- Pipe tape
- Phillips screwdriver



Maintenance

Your new bar faucet is designed for years of trouble-free performance. Keep it looking new by cleaning it periodically with a soft cloth. Avoid abrasive cleaners, steel wool and harsh chemicals as these will dull the finish and void your warranty.

Safety Tips

- If you use soldering for the installation of the faucet, the seats, cartridges and washers will have to be removed before using flame. Otherwise, warranty will be void on these parts.
- Protect your eyes with safety glasses when cutting or soldering water supply line.
- Cover your drain to avoid losing parts.

Important Points

Prior to beginning installation, turn off the cold and hot water lines and open the old faucet to release built-up pressure. When installing your new faucet, turn the connector nuts finger-tight, then use one wrench to anchor the fitting and a second wrench to tighten the nut one additional turn. Connections that are too tight will reduce the integrity of the system. Wrap all threaded connections with Teflon tape available at your local hardware or plumbing supply store. Always wrap in a clockwise direction. The fittings should be installed by the State-licensed plumber.

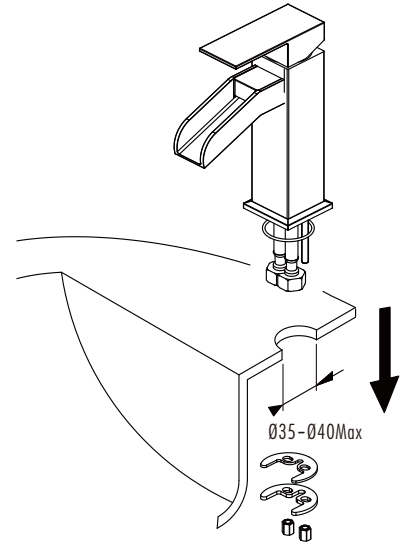
Things You May Need

All installations can vary depending on how your previous faucet was installed. Necessary supplies to install your faucet are not all included; however, they are available wherever plumbing supplies are sold. When choosing your installation supplies, make sure they are IAPMO and/or CSA approved products.

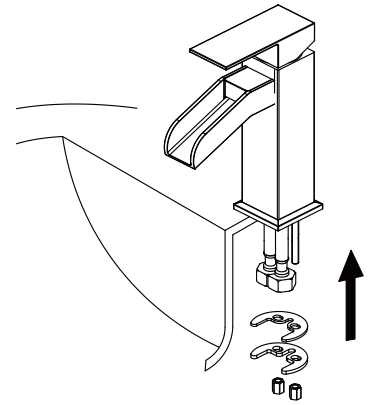


Preparation/Assembly

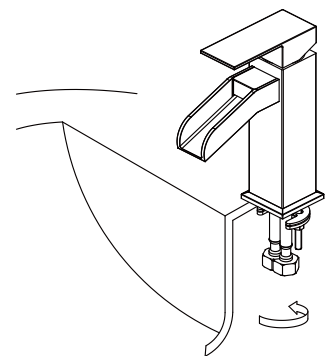
- 1** Make sure there is a $\text{Ø}35\text{-}\text{Ø}40$ Hole on the basin before fix the mixer, Unscrew the fitting ASSY from the bottom of the body, then get the body through the hole, don't forget to fix the o-ring between the bottom of the body and the basin.



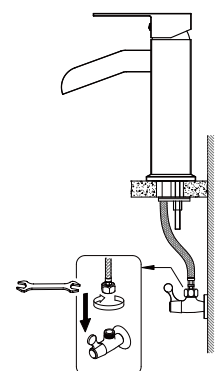
- 2** According the remove step to screw up the fixing set to the mixer below the basin.



- 3** Use hand to screw up the locknut, then use install tool for fixing strengthen.

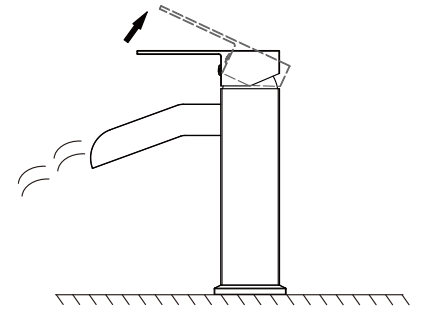


- 4** Connect the inlet hose from the body, "Red" for connecting to the hot water, and "Blue" for connecting to the cold water.



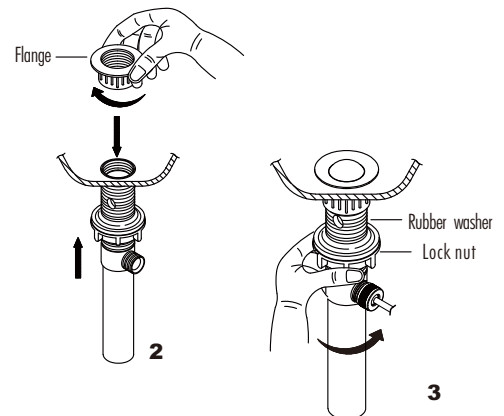
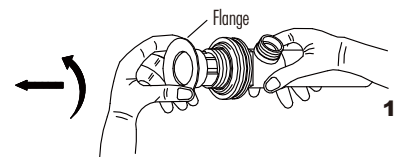
Installation

- 5** Pull the handle top is open, the angle you pull are more, the flow rate is becoming large, conversely the angle you pull are small, the flow rate is becoming little till close.

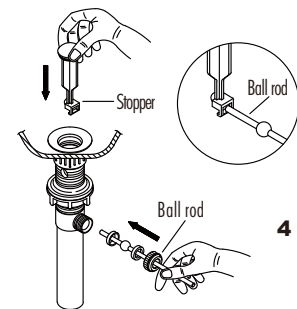


Installation/Pop-Up drain

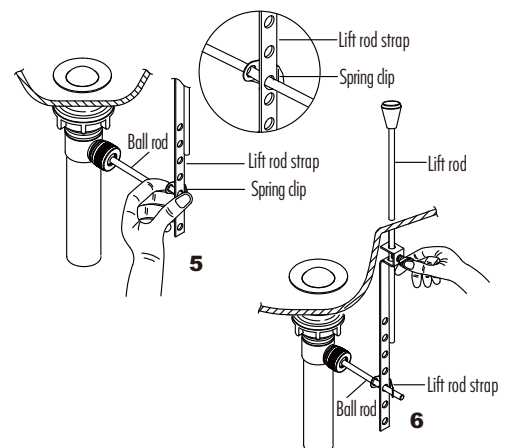
- 1** Remove flange from pop up main body. Leave black washer and nut on drain body.
- 2** Place a ring of putty around drain opening of sink. Insert threaded end of drain body up through drain hole and attach flange to body with ball rod pointing to rear of sink
- 3** Thread locknut from underside of sink until rubber washer seats securely inside opening of sink. Tighten locknut with a wrench. Wipe excess putty.
- 4** Unthread the nut from the pop-up body and remove the spring clip from the ball rod (please note: retain the white packing ring on the ball rod), and place the nut in the ball rod. Insert the ball rod into the side hole of drain, through the hole in the stopper, slide the nut on and tighten securely



- 5** Place one end of spring clip on the end of ball rod. Insert rod through hole in lift rod strap. Secure the lift rod strap by placing the other end of the spring clip on the ball rod.

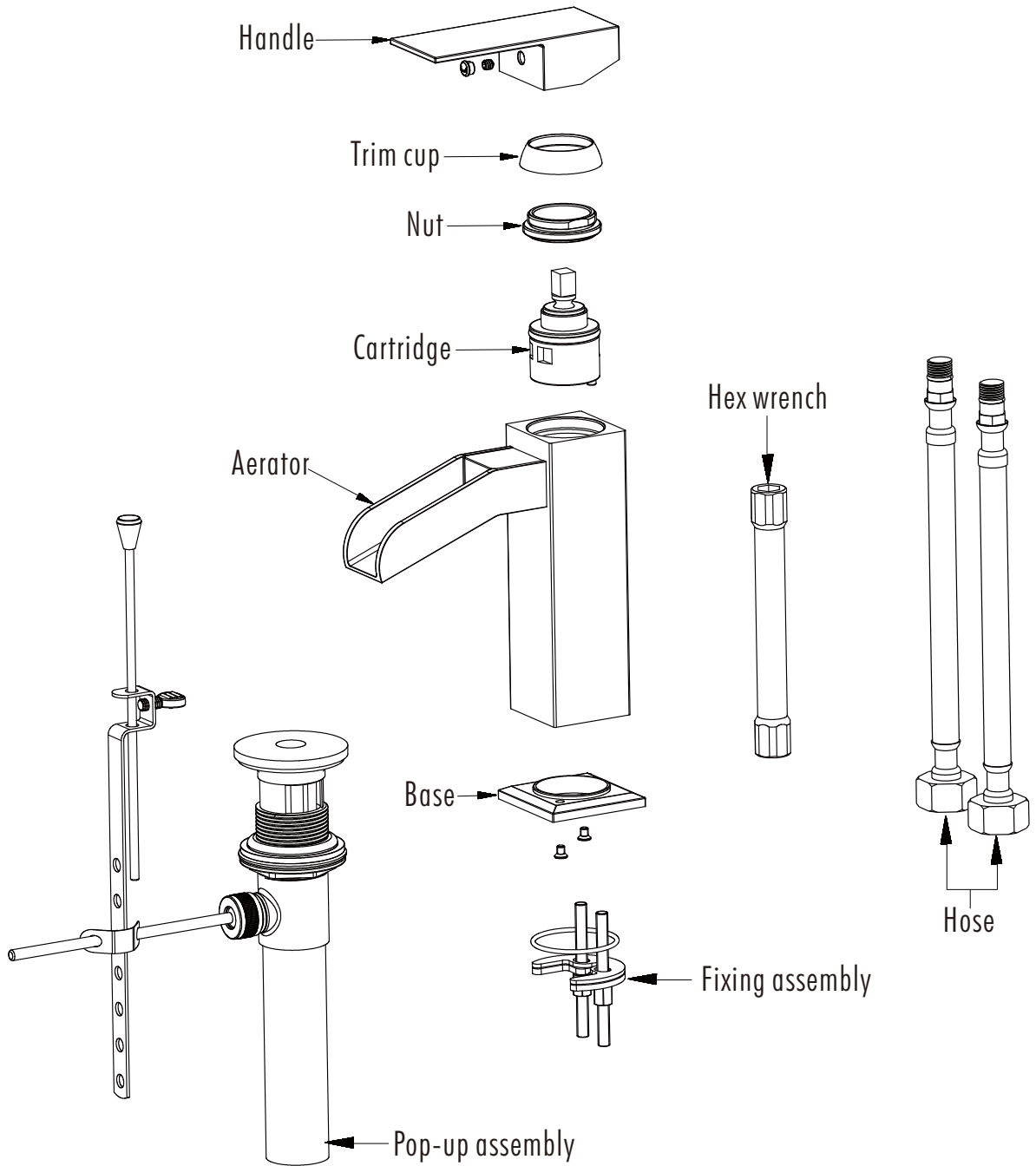


- 6** Insert bottom of lift rod into hole at top of pop-up strap. Tighten with thumb screw.



Steps 1-6

Parts Breakdown



Parts Diagram