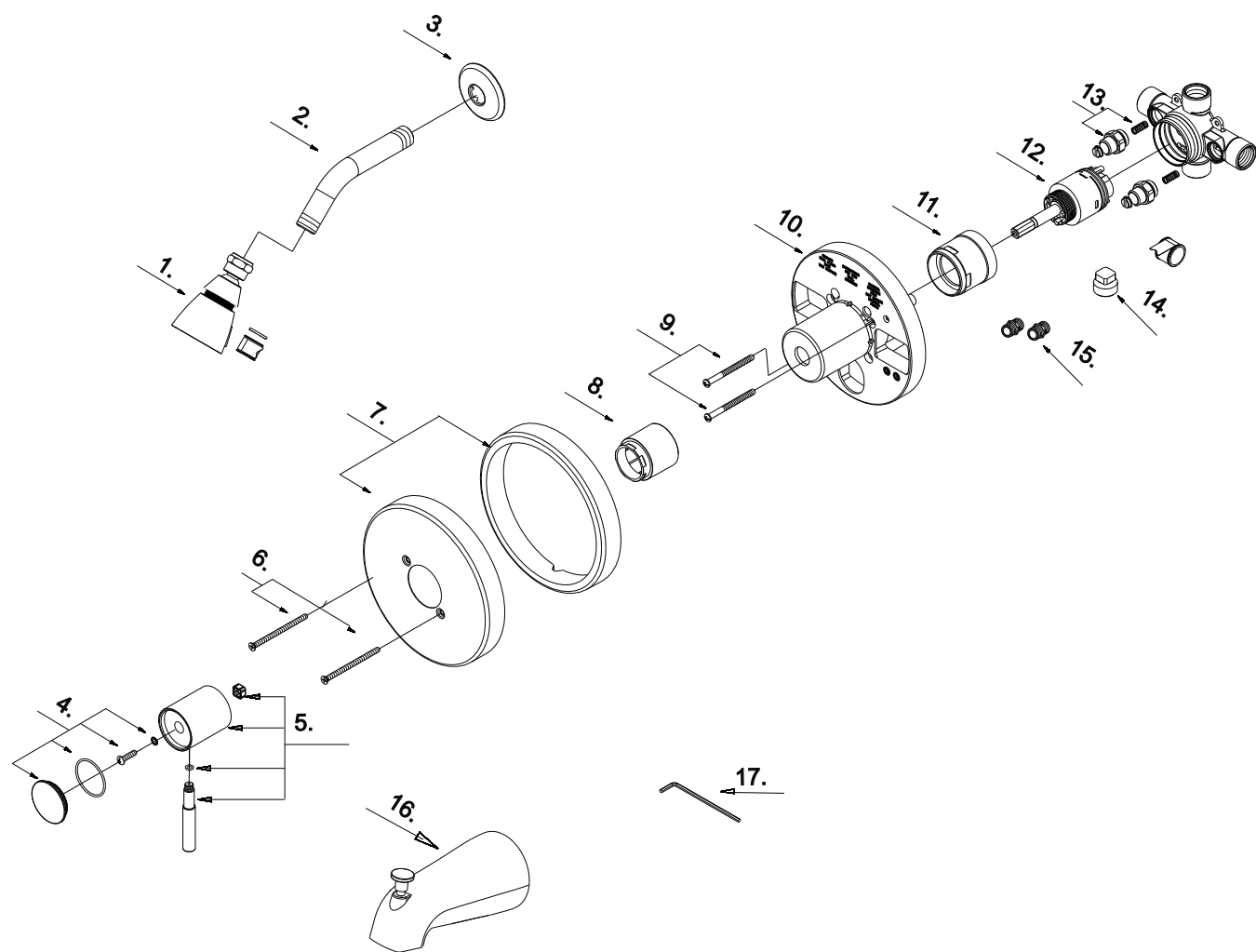


Replacement Parts

Keep this manual for ordering replacement parts



1 Shower Head	S11B0200
2 Shower Arm	A020002
3 Shower Arm Flange	A019001
4 Handle Cap	A66D592
5 Metal Handle Assembly	A662098
6 Screw Set(3/16" -24 * 4" L)	A608564
7 Escutcheon Assembly	A667809
8 Sleeve	A103311
9 Screw Set(3/16" -24 * 2-3/16" L)	A608519
10 Plaster Guard	A127211KP
11 Retainer Nut	A103303
12 Ceramic Disc Cartridge	A507887
13 Check Valve	A603120
14 Plug	A028004
15 Threaded Connector	A077034
16 Spout W/Diverter	A118011
17 Hex Wrench (H3.18 *20 mm L * 90 mm L)	A031017NI



10306
Chrome Finish

Single Control—Anti-Scald Valve Tub & Shower Faucet

Converts to Tub Only or Shower Only

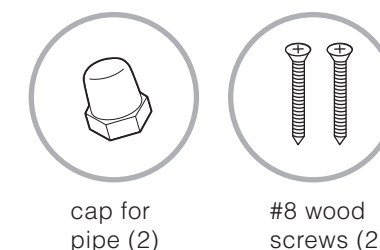
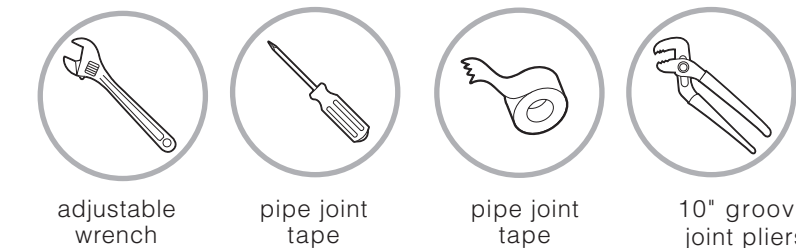


Before You Begin

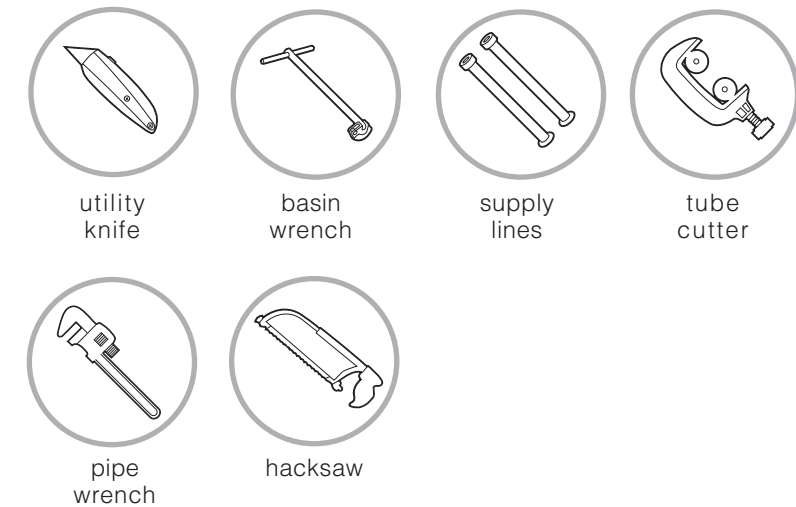
Check to make sure you have the following:

Tools and Supplies

You will need the following to install your new faucet:

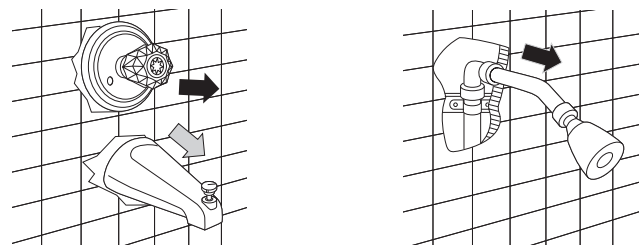


Tools and supplies that will help simplify the installation of your new faucet:



Removing Your Old Faucet

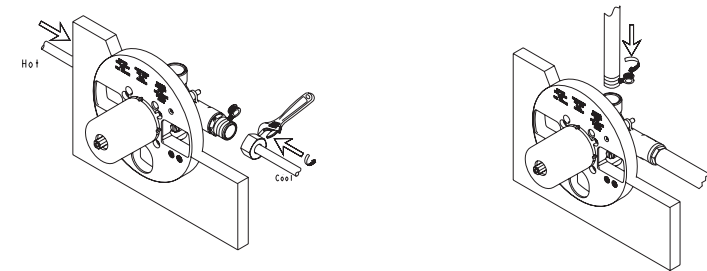
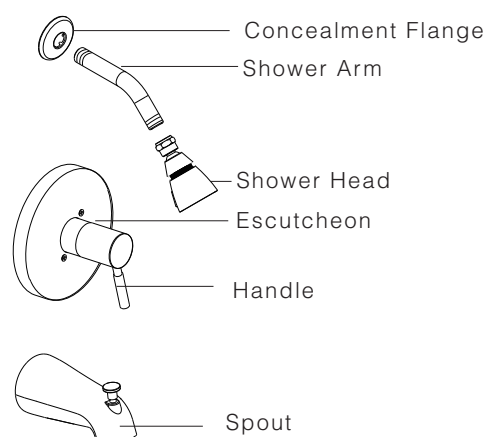
Before doing any work on the faucet, shut off water supply and close drain to avoid losing small parts.



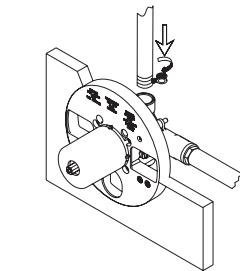
1 Shut off hot and cold water supply to faucet or turn off main water supply. Remove old handle, faucet and spout. Clean surface.

2 Remove old shower head and neck. Clean surface.

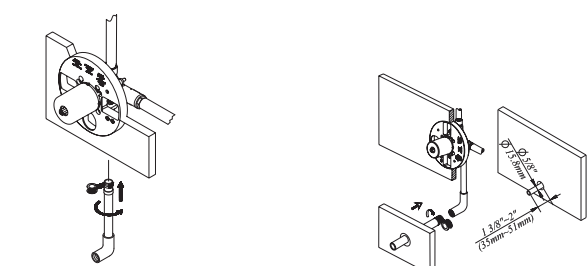
Faucet Installation



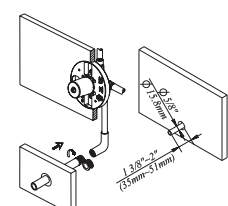
1 Attach hot and cold supplies to handle valves. Use pipe joint tape on all pipe threads, making sure that the valve is positioned so that the plaster guard is flush with the interior finished wall.



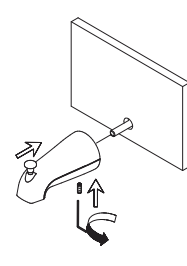
2 Attach shower vertical pipe and elbow. **Note:** For tub only, install conversion plug in place of pipe.



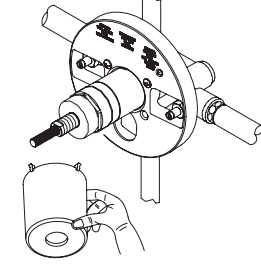
3 Attach tub vertical pipe and elbow. **Note:** For shower only, install conversion plug in place of pipe.



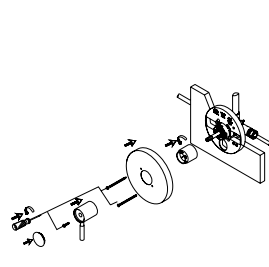
4 Attach spout pipe, ensuring 4" protrusion beyond tile surface. Cap pipe.



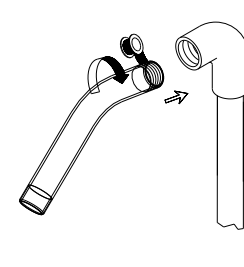
5 Slip on installation over 1/2" copper pipe: Slide the spout over the pipe with the spout tight to the wall, tighten the set screw to the pipe.



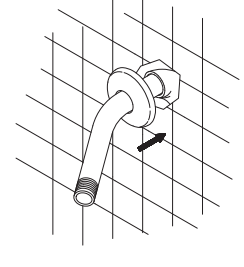
6 Before installing escutcheon, remove the plastic cap from plaster guard by twisting cup to the clock wise.



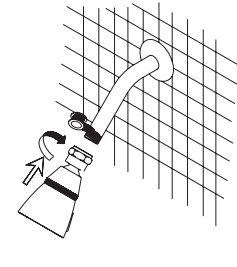
7 Mount seal and escutcheon with mounting screws. Ensure that fit is flush with tile surface. Attach handle.



8 Attach shower neck. Cap shower neck. Turn on water and check for leaks.



9 Remove shower cap. Slip on concealment flange.



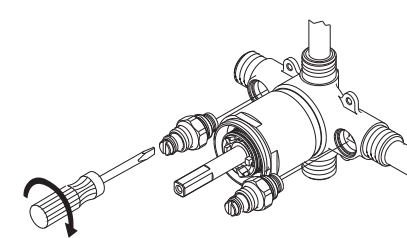
10 Turn on water slightly. Flush system. Turn off water. Screw on and adjust shower head.

Troubleshooting Guide

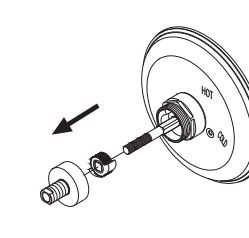
Minor problems often can be fixed without a plumber. Before doing any work on the faucet, shut off water supply and close drain to avoid losing small parts.

Problem	Cause	Solution
Leak from spout or shower head in a stall shower	Damaged or dirty seals	Disassemble handle, remove cartridge. Clean or replace cartridge if necessary. Reassemble.
Leak from under handle	Damaged cartridge	Disassemble handle, remove cartridge. Clean or replace cartridge if necessary. Reassemble.
Uneven spray from shower	Clogged shower head	Remove shower head. Clean and reassemble.
Water drips from faucet when diverter is in shower position	Damaged diverter	Replace diverter spout.
Shower head doesn't stay in position	Worn O-ring	Replace shower head.

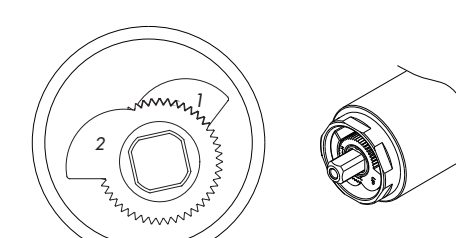
Temperature Limiting Device



1. Turn off water supply from check valve with flat screwdriver (hot & cold).



2. Adjust limiting device to select optimum temperature and to avoid accidental scalding.



3. The temperature limiting device is pre-set to maximum hot water temperature. To adjust temperature, remove cam 2 and rotate counter-clockwise to reduce hot water temperature.