



18 in. Gas Trimmer - Straight Shaft

Item No. 51978—318000001 & Up
Manufacturing No.—090309030

Parts Catalog

Ordering Replacement Parts

To order replacement parts, please supply: the part number, the quantity, and the description of each part.

Understanding Reference Numbers

Each identified part in an illustration has a reference number. The reference number for a part also appears in the list, along with other information about the part.

Understanding Figure Numbers

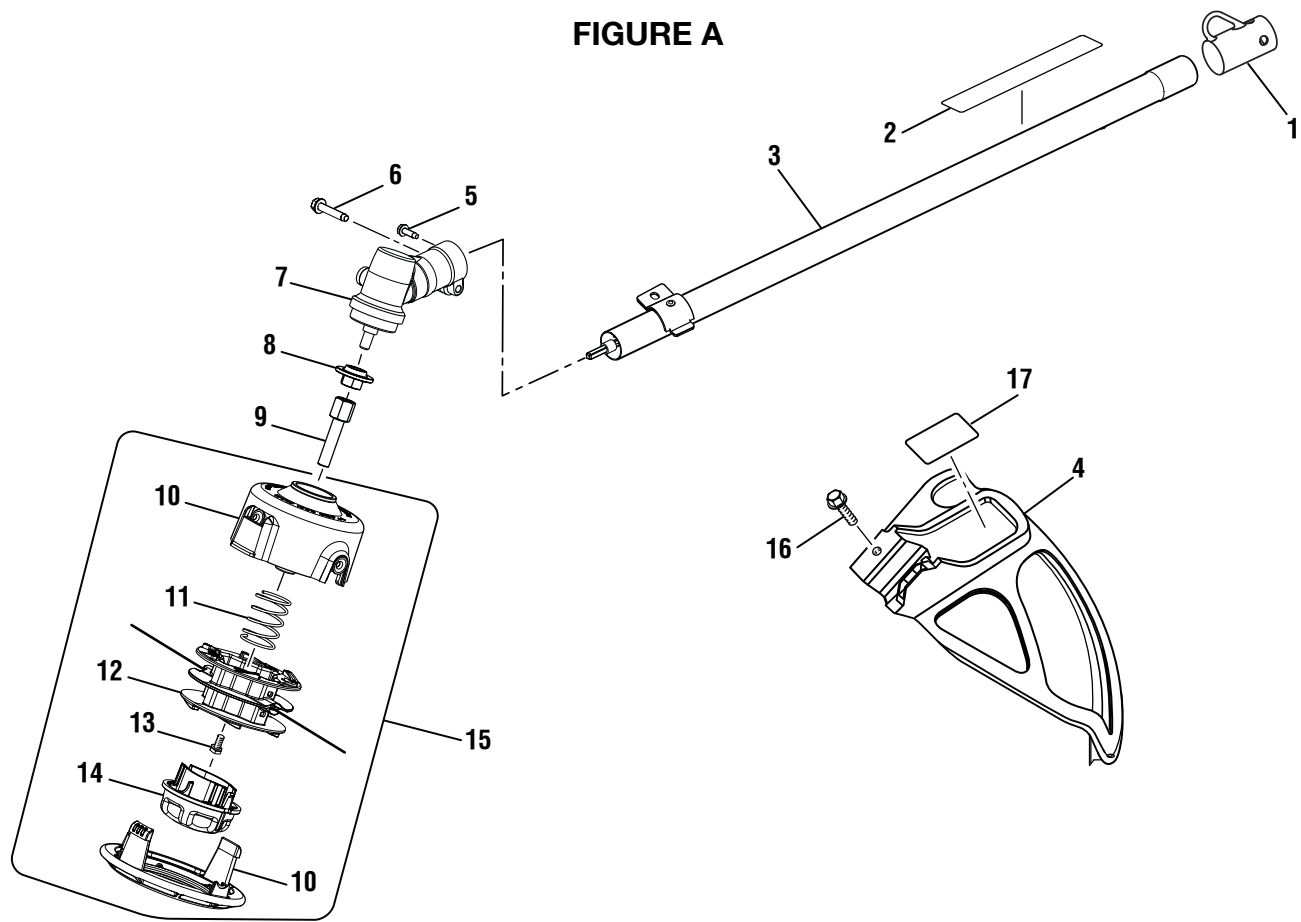
This catalog uses two special reference number formats, one to indicate parts in a service assembly and another to indicate a Figure Number.

Figure Numbers are represented as a Sub-Assembly which follow the exploded views.

Sub-Assemblies can be ordered as an Assembly or you may order any part individually.

TORO STRING TRIMMER – MODEL NUMBER 51978

FIGURE A

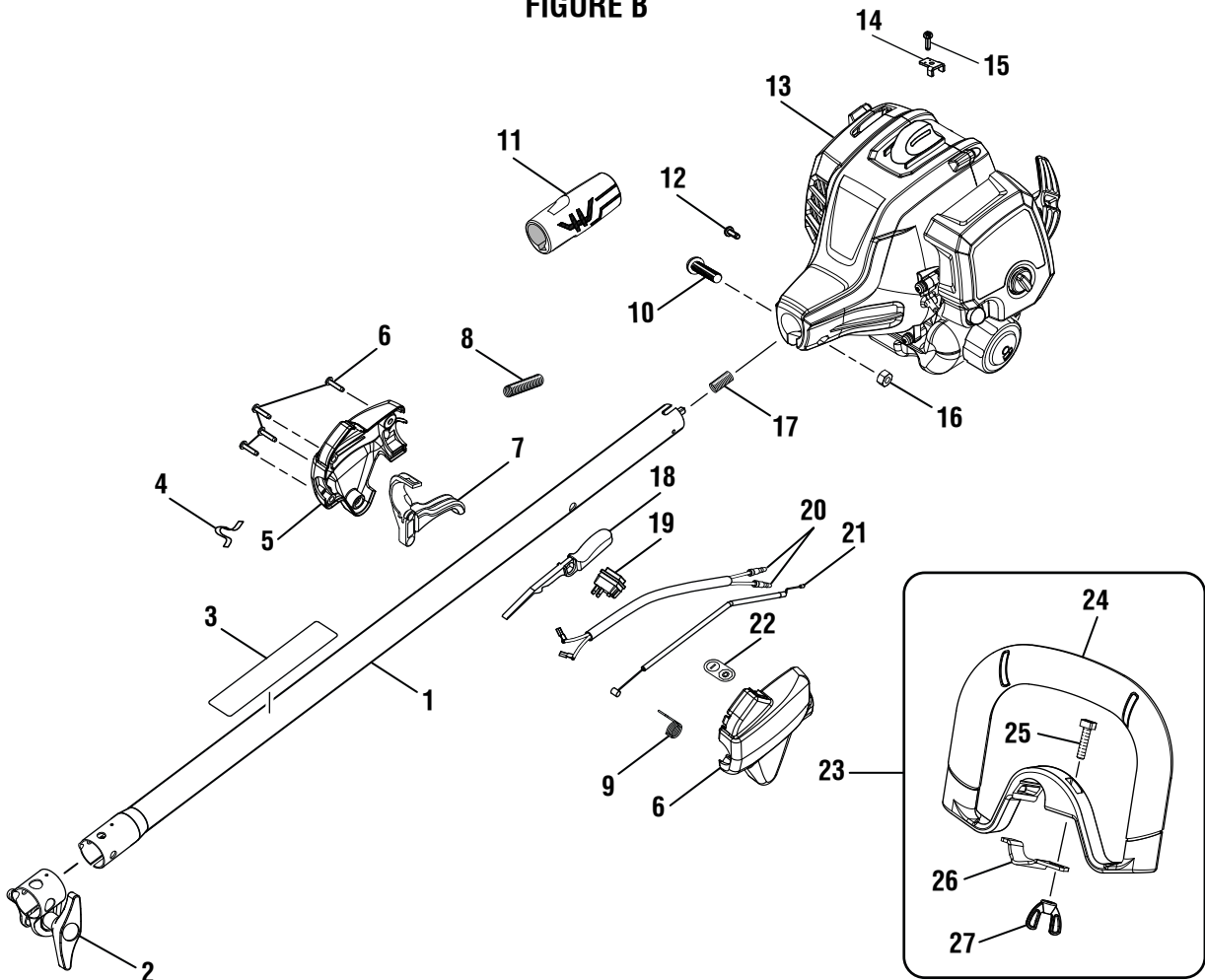


KEY PART NO. NUMBER	DESCRIPTION	QTY
1 518019002	Hanger Cap	1
2 940657165	Warning Label.....	1
3 308035059	Straight Shaft Assembly (Inc. Key Nos. 1-2)	1
4 308473004	Grass Deflector Assembly	1
5 660736001	Screw (10-24 x 5/8 in., Hex Washer Hd.)	1
6 660642001	Screw (1/4-20 x 1-1/4 in.)	1
7 308210008	Gear Head Assembly.....	1
8 678011001	Flanged Washer.....	1
9 678019004	Trimmer Head Shaft Adaptor.....	1
10 518800005	Stringhead Housing.....	1
11 678749001	Compression Spring.....	1
12 308924002	Spool	1
13 660649001	Bolt (5/16-18 x 1/2 in., L.H.)	1
14 518803003	Bump Knob	1
15 308923015	Trimmer Head Assembly (Inc. Key Nos. 10-14) (.095).....	1
16 660738002	Screw (1/4-20 x 1-1/4 in., Hex Washer Hd.).....	1
17 940865002	Grass Deflector Label.....	1

To locate a source for replacement parts,
contact us toll free at 1-866-574-9242 (US) or 1-866-574-9243 (Canada).

TORO STRING TRIMMER – MODEL NUMBER 51978

FIGURE B



KEY PART NO. NUMBER	DESCRIPTION	QTY
1 308159025	Upper Boom Assembly (Inc. Key Nos. 2-3).....	1
2 308045014	Boom Clamp Assembly.....	1
3 940657164	Warning Label	1
4 638431001	Shoulder Strap Clip	1
5 308869003	Control Handle Assembly.....	1
6 660563002	Screw (M4 x 20 mm, T20 Torx Hd.).....	4
7 518696017	Trigger.....	1
8 518210004	Corrugated Tube	1
9 690694002	Throttle Cable Spring	1
10 T660697001	Screw (M6 x 30 mm)	1
11 570234016	Rear Handle Grip.....	1
12 660925011	Screw (M4 x 8 mm, T20 Torx Hd.).....	1
13 N/A	Powerhead Assembly.....	1
14 638133001	Throttle Cable Clamp	1
15 660734001	Screw (M4 x 16 mm)	1

KEY PART NO. NUMBER	DESCRIPTION	QTY
16 678029002	Hex Nut (M6.3 x 1).....	1
17 690140011	Compression Spring.....	1
18 518695017	Trigger Lock.....	1
19 760961005	On/Stop Switch	1
20 308863029	Lead Assembly	1
21 308225011	Throttle Cable	1
22 940864003	On/Stop Label	1
23 308056009	Front Handle Assembly (Inc. Key Nos. 24-27).....	1
24 526760001	Front Handle w/Grip.....	1
25 660857001	Screw (1/4-20 x 1 in., Sq. Hd.)	1
26 639167001	Front Handle Clamp	1
27 518949001	Wing Nut (1/4-20).....	1

Not Shown:

- 120900107 High Altitude Kit (Walbro)
- 000998216 Spark Arrestor Kit
- 991000428 Operator's Manual

To locate a source for replacement parts,
contact us toll free at 1-866-574-9242 (US) or 1-866-574-9243 (Canada).

FIGURE C

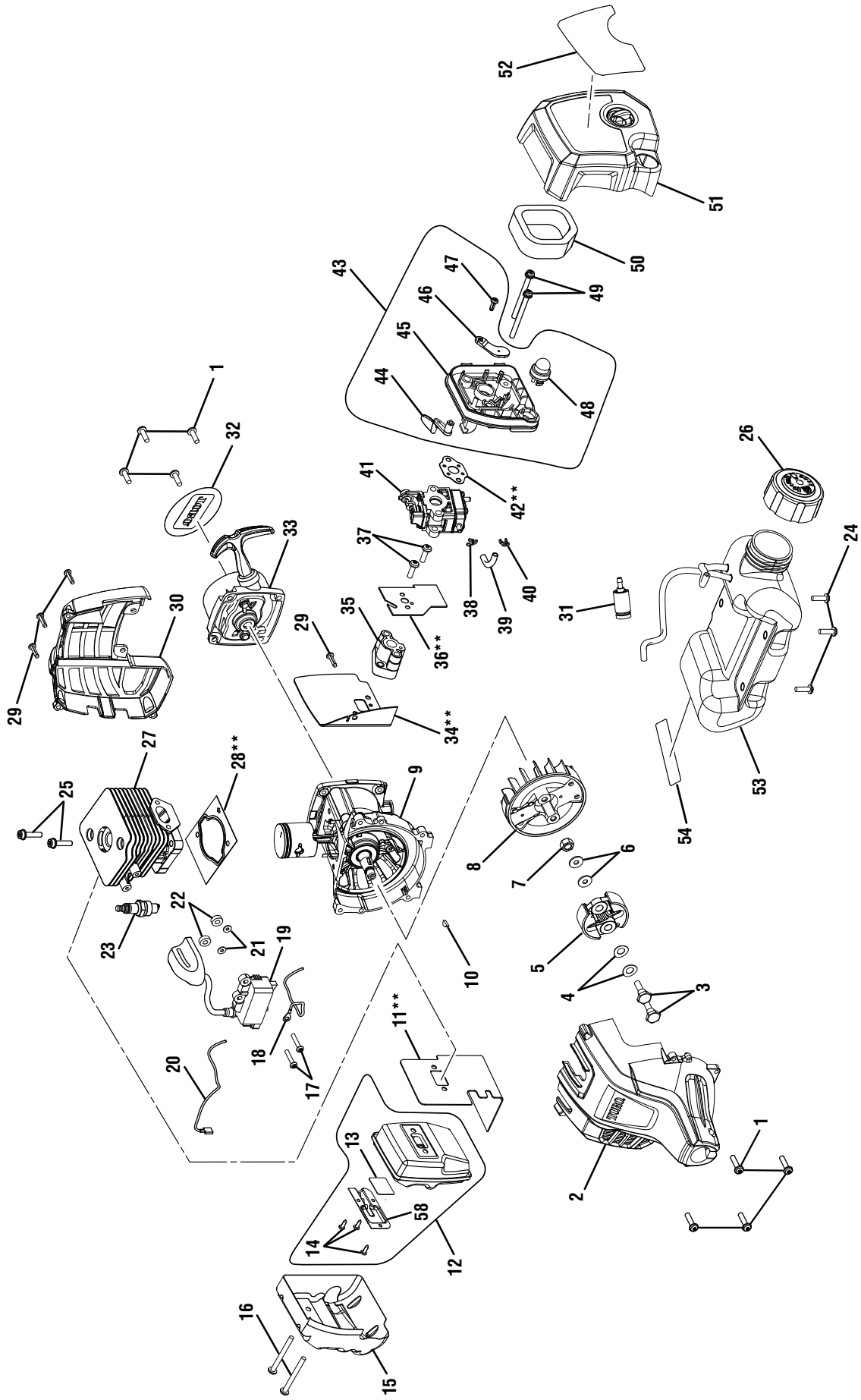


FIGURE C **PARTS LIST**

KEY PART NO. NUMBER	DESCRIPTION	QTY	KEY PART NO. NUMBER	DESCRIPTION	QTY
1	Screw (M5 x 20 mm, T20 Torx Pan Hd.).....	8	29	Screw (M4 x 18 mm, T20 Torx Pan Hd. S.T.).....	4
2	Front Housing Assembly.....	1	30	Rear Engine Housing.....	1
3	Clutch Shoulder Bolt (M6 x 22.5 mm, Hex Hd.).....	2	31	Fuel Filter.....	1
4	Curved Washer.....	2	32	Logo Label (Rear).....	1
5	Clutch Assembly.....	1	33	Starter Recoil & Starter Cup Assembly (Inc. Key No. 32).....	1
6	Washer (ID6 x OD15 x 1.2t).....	2	34	** Insulator Gasket.....	1
7	Flywheel Nut.....	1	35	Heat Dam Insulator.....	1
8	Flywheel.....	1	36	** Gasket.....	1
9	Crankcase Assembly.....	1	37	Screw w/Washers (M5 x 34 mm, T25 Torx Pan Hd.).....	2
10	Woodruff Key (10 mm x 3 mm).....	1	38	Hose Clip.....	1
11	** Muffler Gasket.....	1	39	Fuel Line (45 mm).....	1
12	Muffler Assembly (Inc. Key Nos. 13-14 and 58).....	1	40	Hose Clip.....	1
13	Screen.....	1	41	Carburetor Assembly.....	1
14	Screw (6-20 x 1/4 in., T20 Torx Pan Hd. S.T.).....	3	42	** Carburetor Gasket.....	1
15	Heat Shield.....	1	43	Airbox Base Assembly (Inc. Key Nos. 44-48).....	1
16	Screw (M5 x 50 mm, T25 Torx Soc. Hd.).....	2	44	Choke Lever.....	1
17	Screw w/Washer (M4 x 19 mm, T20 Torx Soc. Hd.).....	2	45	Airbox Base.....	1
18	Lead Wire (Red).....	1	46	Choke Plate.....	1
19	Coil Boot Assembly.....	1	47	Screw (M4 x 12 mm, T20 Torx Pan Hd. S.T.).....	1
20	Lead Wire (Black).....	1	48	Primer Assembly.....	1
21	Washer (ID4.2 x OD10 x1t).....	2	49	Screw (M5 x 60 mm, T25 Torx Cap Soc. Hd.).....	2
22	Spacer (Phenolic).....	2	50	Air Filter.....	1
23	* Spark Plug (Champion RCJ4).....	1	51	Airbox Cover Assembly w/Label (Inc. Key No. 52).....	1
24	Screw (M5 x 16 mm, T25 Torx Soc. Hd.).....	3	52	Starting Instructions Label.....	1
25	Screw (M5 x 22 mm, T25 Torx Soc. Hd.).....	2	53	Fuel Tank & Cap Assembly (Inc. Key Nos. 24, 26, 54-55).....	1
26	Fuel Cap Assembly.....	1	54	Combustion Warning Label.....	1
27	Cylinder.....	1			
28	** Gasket.....	1			

* Standard Hardware Item – May Be Purchased Locally

**Non-Reusable Parts To locate a source for replacement parts, contact us toll free at 1-866-574-9242 (US) or 1-866-574-9243 (Canada).



This product is assembled under license from
The Toro Company by Techtronic Industries North America, Inc.

Techtronic Industries Power Equipment

P.O. Box 1427
Anderson, SC 29622
USA

Customer Service Information

If your product requires service or maintenance,
contact your nearest authorized service dealer.

To locate your nearest authorized service dealer for this product,
contact us toll free at 1-866-574-9242 (US) or 1-866-574-9243 (Canada).