

en-us Use and Care Manual, Installation Instructions

Washer
WAW285H2UC



Welcome to Your New Washer!

Congratulations on your selection of a new Bosch washer for your laundry needs. We are confident you will enjoy the superior performance and reliability.

Please do not hesitate to contact our Customer Service department if you have any questions or comments with your new washer.

Thank you for choosing Bosch.

Visit our website at www.bosch-home.com/us for more information and to view a selection of our products.

Table of contents

Important information	4	Home Connect	27
Purchase information	4	Connecting to your home network automatically	27
Customer service	5	Connecting to your home network manually	27
Your washing machine is intended for	6	Connecting to the Home Connect app	28
Safety Definitions	6	Activating/deactivating Wi-Fi	28
IMPORTANT SAFETY INSTRUCTIONS	7	Resetting your network settings	29
Introduction to your new washer	9	Updating the software	29
Standard features and helpful information	9	Information on data protection	30
Special features	9	Declaration of Conformity	30
Environmentally friendly use of your washer	9	Wi-Fi® Module FCC/IC Statements	30
Dimensions and clearances required	10	Laundry	31
Appliance dimensions	10	Preparing the laundry	31
Length of power cord and water supply hoses	10	Sorting the laundry	31
Installation types	10	Identifying and treating stains	32
Installation instructions	12	Laundry detergents and additives	33
Introduction	12	Adding the correct amount of HE detergent	33
Tools needed	12	Program selection table	34
Waste disposal	12	Starching	35
Parts provided with your washer	13	Dyeing/bleaching	35
Set up on a pedestal with drawer	13	Soaking	35
Installation checklist	14	Optional program settings	36
Importance of installing on a solid, level floor	14	EcoPerfect	36
Remove the transport bolts	14	Prewash	36
Water connections	15	Rinse Plus	36
Leveling the washer	17	Remote Start	36
Electrical connection	18	Finish in	36
Transporting the washer	18	Spin Speed	36
Getting to know your appliance	20	Temperature	36
Control panel	20	SpeedPerfect	36
Display area	21	Stains	36
Operating Instructions	23	Appliance settings	37
Before using the washer for the first time	23	Child lock	37
Before loading your first load of laundry	23	Activating setting mode	37
Using the program selector to choose a wash program	23	Exiting setting mode	37
Selecting optional program settings	23	Cleaning and maintenance	38
Loading the laundry	23	Cleaning the housing and control panel	38
Filling the detergent and additives compartments	24	Cleaning the drum	38
Starting the program	25	Descaling the washer	38
Selecting a different program	25	Cleaning the detergent dispenser tray	38
Pausing/Adding a garment to the cycle	25	Cleaning the water inlet strainers	39
Cancel program	25	Cleaning the drain pump	39
Program end	25	Troubleshooting	41
Removing laundry/switching the appliance off	26	Emergency door lock release	41
		General Troubleshooting	41
		Information on the display area	44
		STATEMENT OF LIMITED PRODUCT WARRANTY ..	45
		Bosch Clothes Washer	45

Additional information on products, accessories, replacement parts and services can be found at www.bosch-home.com/us and in the online shop www.bosch-home.com/us/store

Questions?
1-800-944-2904
www.bosch-home.com/us
1901 Main Street, Suite 600
Irvine, CA 92614

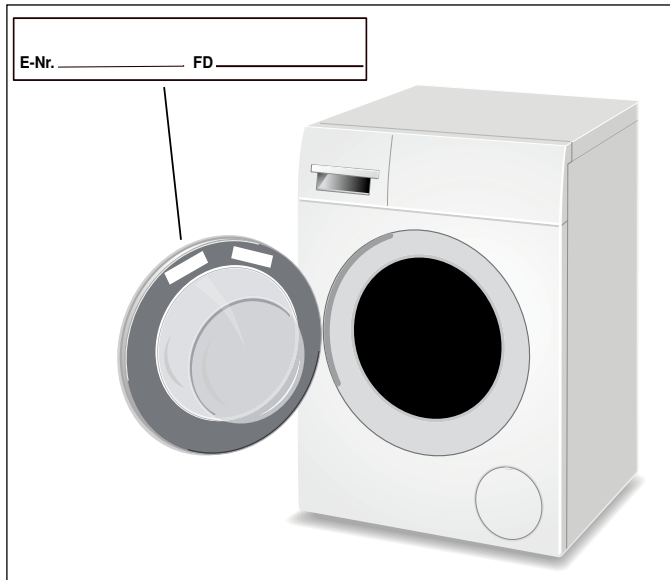
We look forward to hearing from you!

Important information

Purchase information

Please take a moment to record the following basic information about your new Bosch washer.

This information will be helpful in the event you need to contact Customer Service or would like to order accessories or replacement parts.



The **E-Nr.** (model number) and the **FD** (serial) number are found on the rating plate label.

see illustration

The model number includes the slash and a two digit number (e.g. "/27"). Please be sure to include the final 2 digit number when filling in your model number. This helps make sure any parts you may need are correctly matched to your specific machine.

Date of Purchase: ___/___/___

Where Purchased: _____

E-Nr. : _____ / ____ (ex: WAW285H2UC/01)

FD : _____ - _____ (ex: 9706|90007)

The manufacturer reserves the right to make changes in the product or manual without notification.

Customer service

Your washer does not require any special care other than the maintenance and care mentioned in this manual. If you have a problem with your washer, please consult.

→ *Troubleshooting; Page 41*

This may save you money. If a technician comes out to advise you of information that is in the Troubleshooting table you may be charged.

If problems persist and service becomes necessary, contact your dealer, installer or an authorized service center. Do not attempt to repair the appliance yourself. Any work performed by unauthorized personnel may void the warranty.

If you are having a problem with your washing machine and are not pleased with the service you have received, please follow these steps:

1. Contact your installer or the Authorized Service Provider in your area and explain to them why you are not satisfied. This will usually correct the problem.
2. If after working with your installer or service technician the problem still has not been resolved to your satisfaction, please let us know either by writing to us at:

BSH Home Appliances Corporation
1901 Main Street, Suite 600
Irvine, CA 92614

or calling us at:
1-800-944-2904

When writing or calling please have the following information available:

- E-Nr. (model number, example: WAW285H2UC/01)
- FD (serial number, example: 9706|90007)
- Date of Original Purchase (receipt required)
- Date Problem Occurred
- Explanation of Problem

If writing, please also include a daytime telephone number and a copy of the sales invoice.

When calling Customer Service, please be ready to provide the model number **E-Nr.** and **FD** serial number. This information will help provide the best support for your washer.

Additional information is available at our website.
www.bosch-home.com/us

Your washing machine is intended for

- Only household use and in a non-commercial environment.
 - Use with machine washable textiles only.
 - Washing with common cold and hot (maximum 140 °F/60 °C) tap water and commercially available detergents and cleaning products suitable for use in washing machines.
 - **We recommend HE (High Efficiency) detergents because they are designed to deliver optimum performance from your front-loading washer. Not using HE detergent could cause problems such as oversudsing, extended cycle periods, or a decrease in wash performance.**
- NOTICE: Do not use chlorine bleach!** → *Operating Instructions; Page 23*
- When measuring all detergents/stain removers/laundry care products be sure to follow the manufacturer's instructions.
 - Children must not do any laundry without supervision.
 - Keep pets away from the washer.
 - Set-up conditions:
Ambient temperature: 32-104 °F/0-40 °C
Relative humidity: under 95%
 - Installation by qualified installers.
 - Installation in accordance with all regulatory requirements; if in doubt have the appliance installed by a specialist familiar with these requirements.
- Read the use and installation instructions and all other information included with the washer and act accordingly.
- Keep all documents for future use.

Safety Definitions

Important safety information is contained in this manual and on the warning labels located on your washer.

Standard symbols and headings are used to identify areas where you should take precautions to avoid injury or damage. Please take a moment to become familiar with each of these symbols and what they mean before proceeding.

⚠ WARNING

This indicates that death or serious injuries may occur as a result of non-observance of this warning.

⚠ CAUTION

This indicates that minor or moderate injuries may occur as a result of non-observance of this warning.

NOTICE: This indicates that damage to the appliance or property may occur as a result of non-observance of this warning.

Tip: This symbol is used to draw the user's attention to important matters.

IMPORTANT SAFETY INSTRUCTIONS

READ AND SAVE THESE INSTRUCTIONS

WARNING

When properly cared for, your new appliance has been designed to be safe and reliable. Read all instructions carefully before use. These precautions will reduce the risk of burns, electric shock, fire, and injury to persons. When using appliances, basic safety precautions must be followed, including those in the following pages.

Examine the appliance after unpacking it. In the event of transport damage, do not plug it in.

WARNING

TO REDUCE THE RISK OF FIRE, ELECTRIC SHOCK, SERIOUS INJURY OR DEATH WHEN USING YOUR WASHING MACHINE, FOLLOW BASIC PRECAUTIONS INCLUDING THE FOLLOWING

- Bosch washers are provided with an Use and Care and Installation Instruction manual. Read and understand all instructions before using the washing machine.
 - Do not wash articles that have been previously cleaned, washed, soaked, or spotted with gasoline, dry cleaning solvents, other flammable or explosive substances as they give off vapors that could ignite or explode.
 - Do not add gasoline, dry cleaning solvents, or other flammable or explosive substances to the wash water. These substances give off vapors that could ignite or explode.
 - Under certain conditions hydrogen gas may be produced in a hot water system that has not been used for 2 weeks or more. **HYDROGEN GAS IS EXPLOSIVE.** If the hot water system has not been used for this length of time, turn on all hot water faucets and let the water flow out of each faucet for several minutes before using the washing machine. This will release any accumulated hydrogen gas. As the gas is flammable, do not smoke or use an open flame while carrying out this procedure.
 - Before the appliance is removed from service or discarded, remove the door to prevent children from playing or hiding inside. Also remove the power cord/plug.
 - Do not allow anyone to climb, lean or hang on any part of the washer including any protruding components such as the appliance door or a pullout shelf.
 - Use caution when draining hot water from the washer drum such as during pump maintenance or when using the emergency door open procedure.
 - Do not reach into the appliance if the wash drum is moving.
 - Do not tamper with the controls.
 - Do not repair or replace any part of the appliance or attempt any service unless specifically recommended in the user manual or in Bosch published user repair instructions that you understand and have the skills to carry out.
- Always unplug the washing machine from the power supply before attempting any service. Disconnect the power cord by grasping the plug, not the cord.
 - Do not machine wash fiberglass materials (such as curtains and window coverings that use fiberglass materials). Small particles may remain in the washing machine and stick to fabrics in subsequent wash loads causing skin irritation.
 - Do not install or store the washer where it will be exposed to the weather. Hoses and internal parts may be damaged if exposed to freezing temperatures.
 - Do not use the washing machine if it has a worn power cord or loose plug.
 - The washing machine must only be used for its intended purpose.
 - Always follow the fabric care instructions recommended by the clothing manufacturer.
 - Make sure all water connections to the washing machine have shut-off valves that are readily accessible during normal operation of the washer. Turn off both valves during periods in which the washer is not in use and before leaving for extended periods such as vacations to reduce the risk of water damage in the event of a leak. Turn the valves back on prior to resuming use of the washer.
 - Do not operate the washing machine if parts are missing or broken.
 - Do not operate the washing machine until you are sure that:
 - the washing machine has been installed according to the Installation Instructions.
 - all water, drain, power and grounding connections are in compliance with all local regulations and/or other applicable regulations and requirements.
 - Certain internal parts are intentionally not grounded and may present a risk of electric shock during servicing. Service Personnel – **DO NOT CONTACT** the following parts while the appliance is energized: inlet valves, drain pump, heat sink of the motor controller, PCBs.
 - See the installation instructions in this manual for grounding requirements.
→ *Electrical connection; Page 18*
-

IMPORTANT SAFETY INSTRUCTIONS

READ AND SAVE THESE INSTRUCTIONS

WARNING

WARNINGS FOR CHILDREN

- Do not allow children to play on or in the appliance. Close supervision of children is necessary when the appliance is used near children.
 - Make sure to utilize all child lock/safety features of your appliance, and be sure to turn the appliance **Off** when not in use.
 - Appliances are not intended for use by children, however when children become old enough to operate the appliance, it is the responsibility of the parents or legal guardians to ensure they are instructed in safe practices by qualified persons.
 - Keep all laundry aids (including detergents, bleach, fabric softener, etc.) out of the reach of children.
-

WARNING

STATE OF CALIFORNIA PROPOSITION 65 WARNINGS

This product can expose you to chemicals including vinyl chloride, which is known to the State of California to cause cancer and birth defects or other reproductive harm. For more information go to www.p65warnings.ca.gov

SAVE THESE INSTRUCTIONS!

Keep these instructions for future reference and in case of change of ownership, manual should be conveyed with the washer.

Introduction to your new washer

▲ WARNING

RISK OF FIRE, ELECTRIC SHOCK OR INJURY

To reduce the risk of fire, electric shock or injury to persons, read the **IMPORTANT SAFETY INSTRUCTIONS** of this manual before installing or operating this appliance.

→ *IMPORTANT SAFETY INSTRUCTIONS; Page 7*

Standard features and helpful information

Thank you for choosing Bosch for your laundry appliance needs.

Please read and follow the use and care, important safety instructions and troubleshooting information contained in this manual. Please retain this manual for future reference.

Standard features

- 17.6 lb (8 kg) large drum capacity (for regular cotton loads).
- Low washing and spinning noise levels.
- Large door opening featuring 180° opening angle.

Quality tested

Every Bosch washer is thoroughly tested before leaving the factory. As a result, a small amount of residual water may remain in the washer drum. We recommend running the **Drum Clean** cycle to remove this water prior to washing your first load of laundry.

→ *Before loading your first load of laundry; Page 23*

Website

Visit our website at www.bosch-home.com/us for more information and to view a selection of our products.

About this manual

These operating and installation instructions may apply to more than one model of washer. Illustrations used may show details that differ from your particular model.

Read your user manual. It contains valuable information about safety, installation and operation of your new appliance.

This can save you time, make it easier to correctly install and use your washer, and improve your overall satisfaction with your new appliance.

Special features

- Load adjust matches the water and power consumption to each program according to the amount of laundry sensed in the drum and the type of fabric.
The load adjust function runs automatically to keep energy and water consumption as low as possible. The water level sensor ensures the water level is correct for the laundry and the program selected.
- The automatic unbalanced load detection system spins the laundry several times to ensure even distribution.
If the laundry is not evenly distributed, the spin speed is reduced, or the laundry may not be spun for reasons of safety.
In the Wool program, the spin cycle is attempted only twice in order to prevent felting.

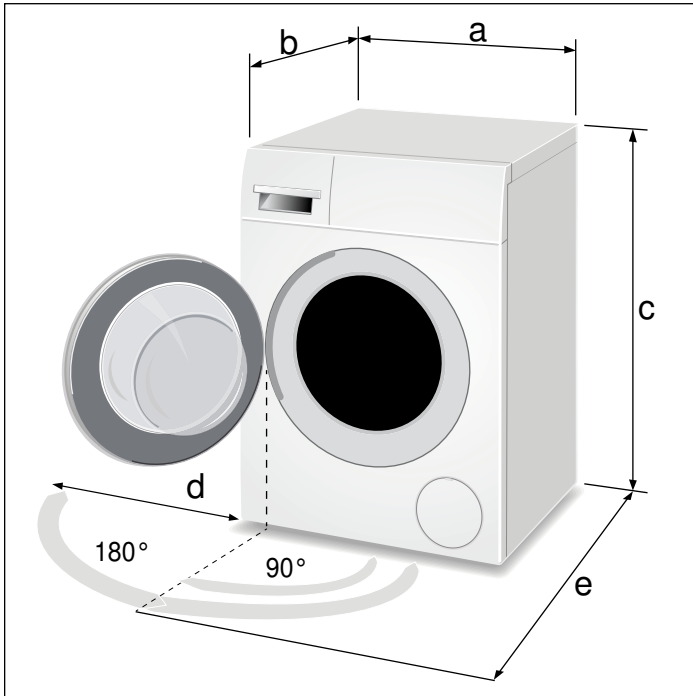
Environmentally friendly use of your washer

Your new Bosch washing machine is designed to use water, energy and detergent in a highly efficient way to help reduce operating costs, conserve resources and protect the environment.

- Utilize the maximum amount of laundry for the appropriate program.
- Avoid using too much detergent.
- Wash normally soiled laundry without a prewash.
- Save energy and detergent when washing lightly and normally soiled laundry.
- **Information about the energy consumption:**
The display provides information about the relative energy consumption in the selected program. The more indicator lamps light up, the higher the program's consumption.
This enables you to compare the consumption levels of the different programs when choosing your program settings and to decide on an energy- and water-saving program setting for the selected program.
- **Energy-saving mode:** The display panel lighting goes out after a few minutes and Start/Pause flashes. To activate the display, press any button.
Energy-saving mode is not activated if a program is running.
If Wi-Fi is activated the appliance will not automatically switch off (automatic switch-off function is deactivated).
- If the laundry will be dried in a dryer afterwards, select spin speed according to the dryer manufacturer's instruction.

Dimensions and clearances required

Appliance dimensions



Label	Dimension	U.S.	Metric
a	width	23.6 in.	60 cm
b	depth (to front of door)	25 in.	64 cm
c	height (minimum*)	33.2 in.	85 cm
	height (maximum*)	33.8 in.	86 cm
d	side clearance (door open 180°)	15.8 in.	40 cm
e	depth (door open 90°)	42.5 in.	108 cm

Weight approximate gross 164 lbs. 77.2 kg

* height of appliance depends on the extension of the height adjustable appliance feet.

Length of power cord and water supply hoses

	To left of washer*		To right of washer*	
	U.S.	Metric	U.S.	Metric
Electric power cord	40 in.	100 cm	55 in.	140 cm
Water supply hoses	43 in.	109 cm	28 in.	71 cm
Drain Hose	27 in.	69 cm	46 in.	117 cm

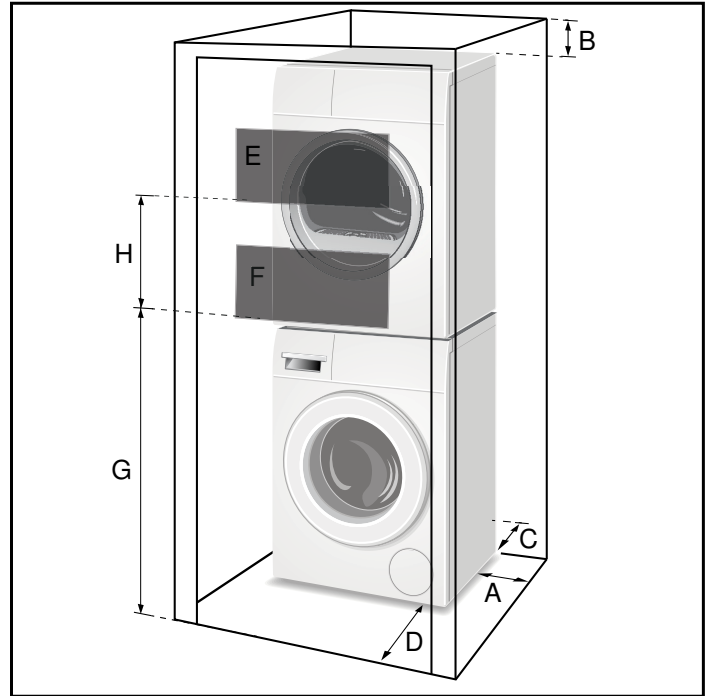
* All distances are measured from indicated side when facing front of washer.

Installation types

Stacked washer and dryer

A Bosch dryer of the same dimensions can be placed on top of the washer to save space.

Use the special washer-dryer stacking kits (noted in Bosch Dryer User Manuals) which can be purchased from customer service or your local dealer.



Clearance requirements (Minimum)

A Both Sides	0.6 in.	1.5 cm
B Top	6.3 in.	16 cm
C Rear*	2.5 in.	6.4 cm
D Front	2.4 in.	6.1 cm

* Rear clearance as close to wall as venting or water connection will allow. For a stacked installation arrangement a greater rear clearance for the dryer venting is required.

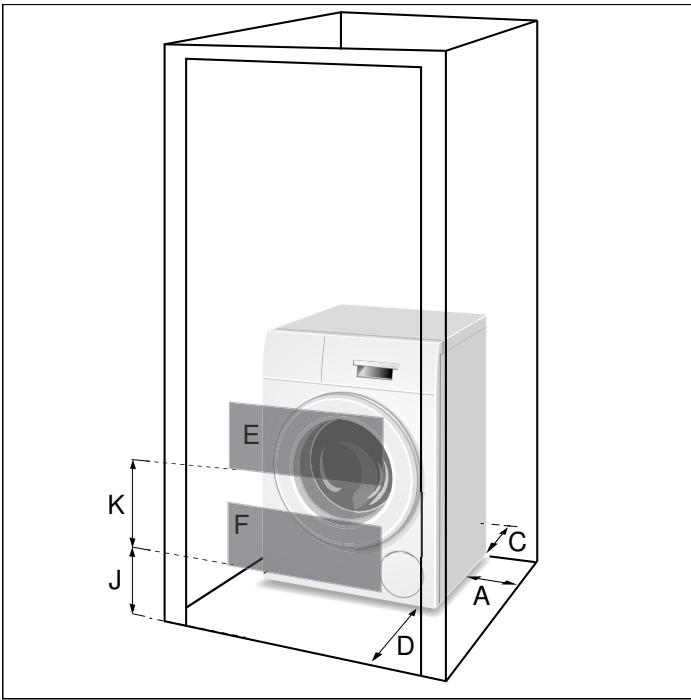
Ventilation area (Minimum)

E Top	63 sq. in.	404 sq. cm
F Bottom	63 sq. in.	404 sq. cm

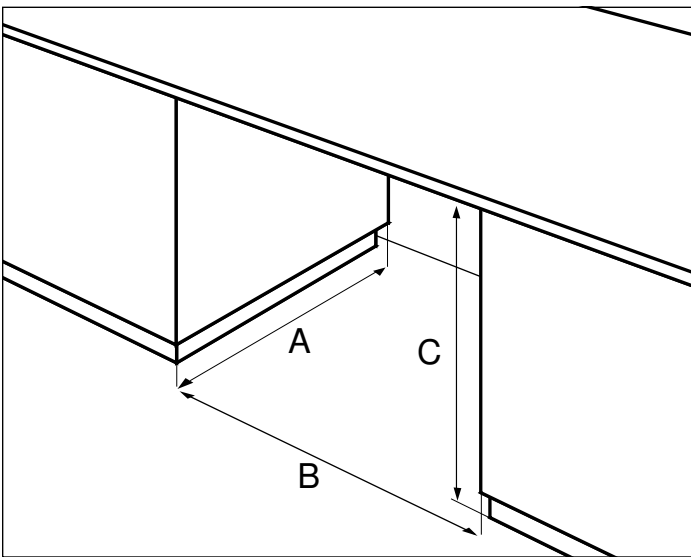
Vent spacing (actual not minimum dimensions)

G	37 in.	94 cm
H	26 in.	66 cm
J	3 in.	7.6 cm
K	29 in.	73 cm

Stand alone (shown) or Side-by-Side



Under counter (Preferred)

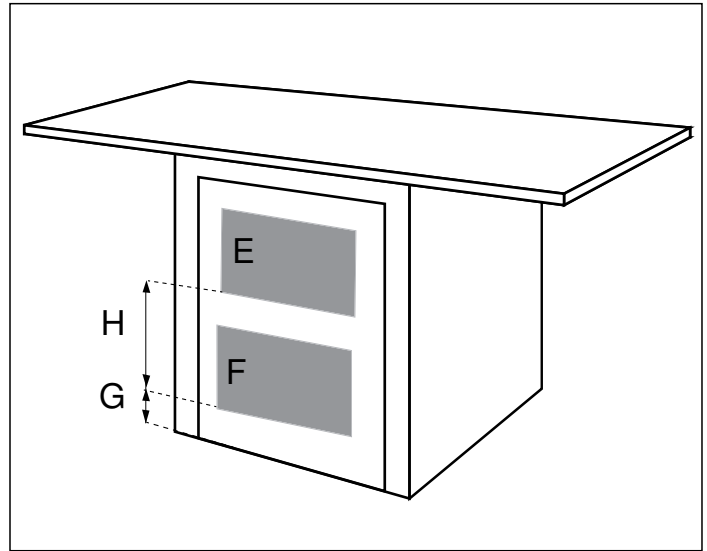


Front of the appliance fully open.
No doors or coverings.

Minimum opening dimensions

A	28 in.	71.1 cm
B	23.8 in.	60.5 cm
C	35.5 in.	90.2 cm

Under counter (Less Desirable)



If front of the appliance is covered ventilation openings must be installed.

E & F are minimum area sizes

E	63 sq.in.	404 sq.cm
F	63 sq.in.	404 sq.cm

G & H actual spacing dimensions for min. open area sizes

G	3 in.	7.6 cm
H	14 in.	35.6 cm

Installation instructions

▲ WARNING

RISK OF FIRE, ELECTRICAL SHOCK OR INJURY TO PERSONS

To reduce the risk of fire, electric shock or injury to persons, read the Important Safety Instructions at the front of this manual before installing or operating this appliance.

▲ CAUTION

WASHING MACHINE IS HEAVY

Use additional help and care when lifting and positioning.

Introduction

Read these installation instructions completely and carefully before starting to install your new washing machine. The information contained can save you time and effort and will help to ensure optimum performance of your new washer. Be sure to observe all warnings and cautions.

NOTICES

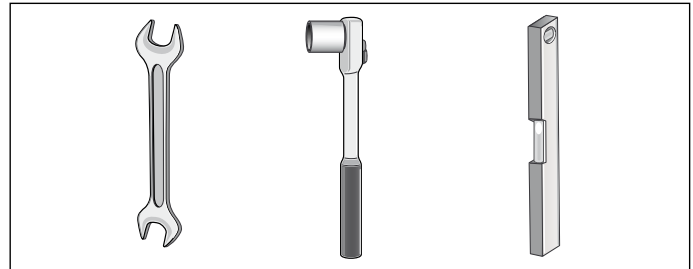
- Frozen hoses can tear or burst. Do not install the washing machine outdoors or in an area exposed to freezing conditions.
- If the washing machine is located in a room which will be exposed to temperatures below freezing, or if it is located in a cabin that is being shut down for the winter, any residual water in the pump or water inlet hose(s) must be drained.
- Take care not to damage the washing machine. Do not hold on to protruding parts (e.g. door) when lifting. Do not push against the appliance door glass due to risk of damage.
- In addition to the safety information listed here, the local water and electric authorities may have special requirements that must be followed.
- If in doubt, have the appliance installed by an authorized technician.
- Hidden surfaces may have sharp edges. During service use caution when reaching inside the washer housing.

These installation instructions are intended for use by qualified installers. In addition to these instructions, the installation must comply with:

- for the United States - National Electrical Code, ANSI/NFPA70 - and latest editions of the State and municipal and/or local regulations.
- for Canada - Canadian Electrical Code C22.1 - and the latest editions of the Provincial, Municipal and/or local regulations.

Tools needed

The following tools may be helpful during installation of your washer.



- 13mm socket for removing the transport bolts.
- 17mm wrench for adjusting the appliance feet.
- Bubble level for leveling the appliance.

Waste disposal

Disposal of Packaging Materials

After unpacking your new appliance dispose of the protective packaging materials in an environmentally friendly way. Ask your dealer or inquire with your local authority regarding currently acceptable means of disposal.

▲ WARNING

WARNINGS FOR CHILDREN

Do not let children play with packaging and associated parts to avoid risk of choking or suffocation.

Disposal of Your Old Appliance

Your old appliance can be recycled if it is no longer to be used. Prior to disposing of your old appliance observe the following precautions to reduce safety risks.

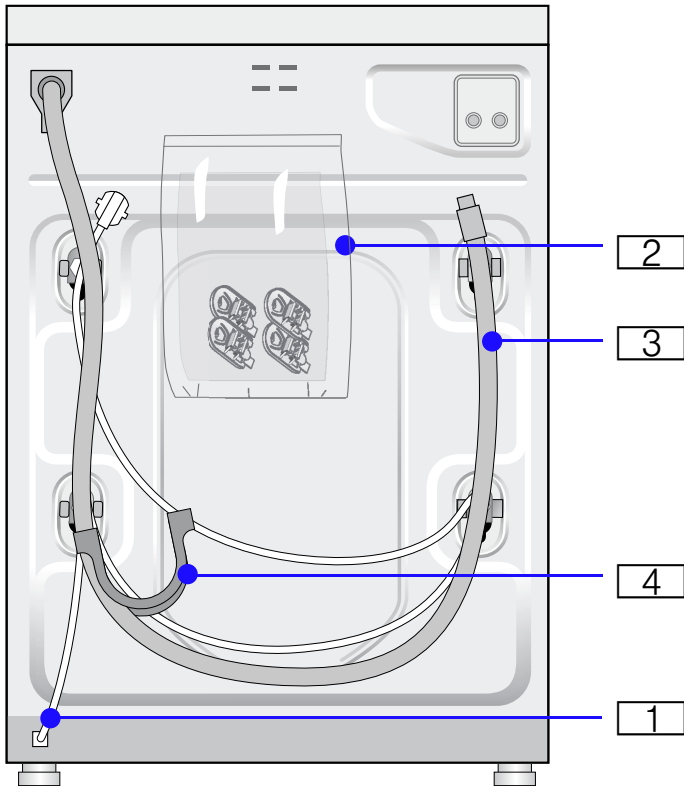
▲ WARNING

TO AVOID RISK OF INJURY OR DEATH, DO THE FOLLOWING

- after unplugging the old appliance, remove the electric power cord and dispose of properly.
 - remove the door or permanently disable the door lock to prevent children from being locked inside.
-

Parts provided with your washer

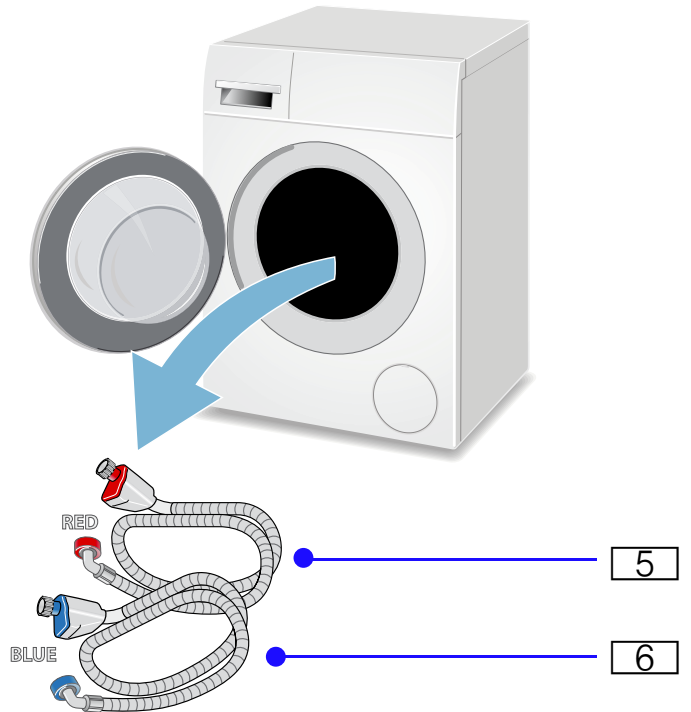
Back side of the washing machine



- 1 Power cord with plug
- 2 Literature pack; contents:
 - User manual
 - Covers
- 3 Drain hose
- 4 Elbow to form the hose to fit the drain pipe

Washer drum contents

Two AquaShield® water supply hoses are shipped in the washer drum. Be sure to remove each of these and use these new hoses for the installation.



- 5 Hot water AquaShield® hose
- 6 Cold water AquaShield® hose

NOTICE: If any parts are missing please notify your dealer immediately.

Set up on a pedestal with drawer

Pedestal item number: WMZ 20490

Mount washer on the pedestal according to the instructions in the installation kit.

Installation checklist

Review the following list and check off each step as it is completed during installation.

✓	Installation Step	Page
	If installing to a pedestal (base), complete the base installation before removing the transport bolts	14
	Completely remove all four shipping bolts keeping the bolt and bushing assemblies intact	14
	Connect the water supply hose and drain hose	15
	Connect the electrical power	18
	Slide the washing machine into its final location	
	Level the washing machine (as low as possible)	17
	Before washing laundry, run the Drum Clean program	23

Importance of installing on a solid, level floor

Your new Bosch washing machine utilizes high spin speeds to achieve superior water removal from your laundry resulting in reduced drying time. It is important to install your washing machine on a floor that will provide firm support. This prevents the washer from experiencing excess vibration during spinning that could cause the washer to move or be noisy.

The installation surface must be solid and level in both directions. Avoid installing your washer on soft surfaces such as floors with carpet or foam backed covering material.

If installing the washer on a wooden floor, observe the following:

- install the washer in a corner for better support if possible.
- if necessary, reinforce the floor by screwing a water resistant wooden board to the floor (minimum of 1.18 in./30 mm thick).

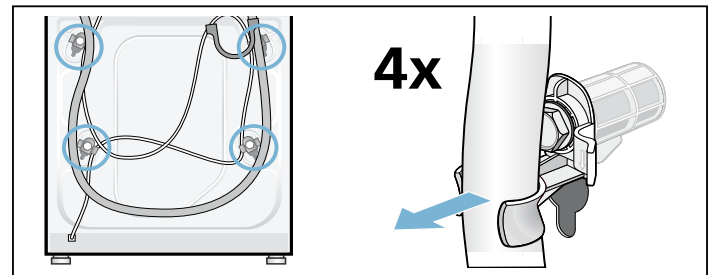
Remove the transport bolts

▲ CAUTION

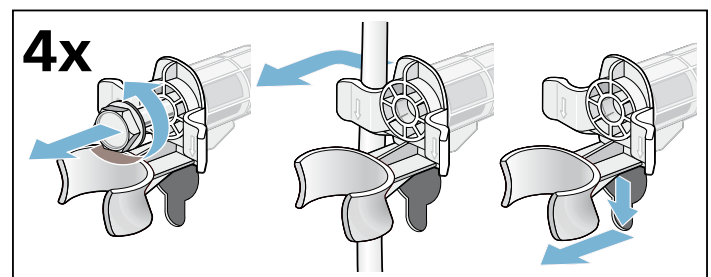
DAMAGE TO THE APPLIANCE OR INJURY POSSIBLE

- The machine is secured for transport with transport bolts. Transport bolts that are not removed can damage the drum during operation of the machine, the washer will vibrate, and it will be much noisier during spin cycles if the transport bolts are not removed before use. Be sure to remove all 4 transport bolts completely before first use. Keep the transport bolts. If a pedestal was purchased with the washer, it must be installed first, prior to removing the transport bolts. Please consult the pedestal installation instructions.
- In order to prevent transport damage during later transport, be sure to re-install the bolts before transport.

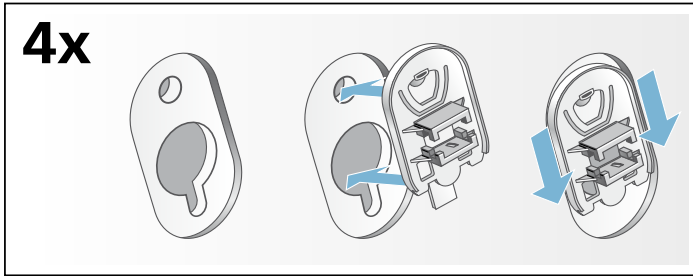
1. Remove drain hose from all brackets.



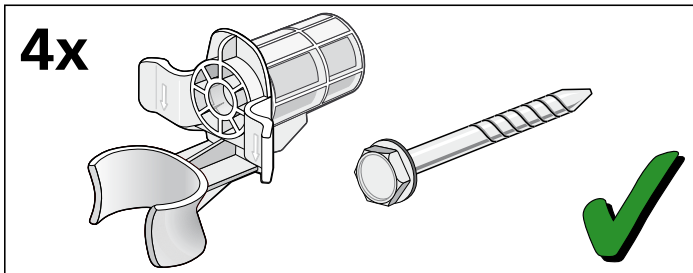
2. Loosen and remove all 4 transport bolts. Remove the sleeves. Take the power cable out of the brackets.



3. Place covers over the transport bolt holes.
Four plastic covers are provided in the small parts bag included with your washer. Separate these covers and install one in each hole where the transport bolts were removed.
Lock covers firmly by pressing on the snap hook.



NOTICE: Keep the assemblies together and store them for later use such as when moving the washer.



Water connections

Water supply hose connections

NOTICES

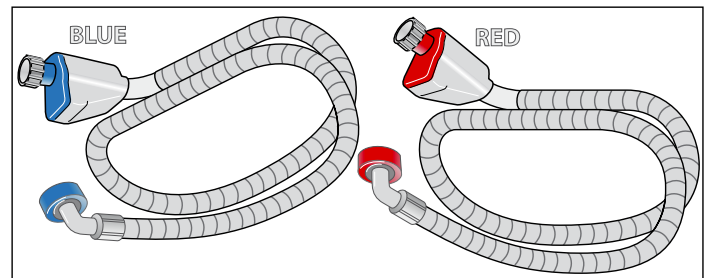
- The washing machine must only be operated with cold and hot (max. 140 °F/60 °C) tap water. Do not connect the appliance to the mixer tap of a pressurized hot-water boiler.
- To prevent water damage, the hot and cold water valves should be accessible when the washing machine is in place and should always be turned off when the washing machine is not in use.
- If installing the washing machine in a new building or a building in which the plumbing system was recently installed or upgraded, flush the lines before installing the washing machine to remove any sand, dirt or residue.
- To prevent leakage or water damage, follow the instructions in this chapter.
- If in doubt, have the appliance installed by an authorized technician.

Connect your washer to the wall faucets using the included AquaShield® water supply hose.

Observe each of the following:

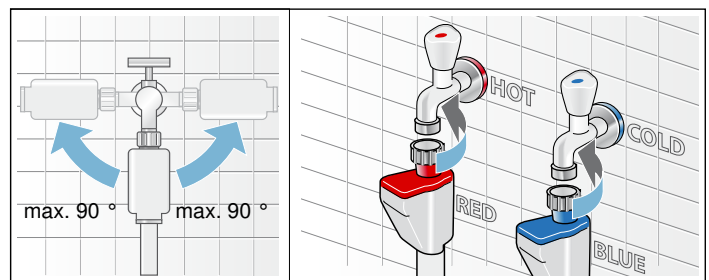
- Only use the new water supply hose shipped with your washer. Never use old used hoses.
- The water supply hoses must not be kinked, bent, or pinched causing hose damage or restricting water flow.

- The water supply pressure must be between **14.5 to 145 psi (1 - 10 bar)** with a minimum of 2.2 U.S. gallons (8 liters) of flow per minute. A pressure regulator valve must be installed if the maximum water pressure is exceeded.
- Make sure the water supply faucet is easily accessible when the washer is in use. The faucet should be turned off if the washer is going to be unused for extended periods of time.
- Make sure rubber washers are in place at both ends of the water supply hose. Missing washers could cause leaks.
- The connection points are under full water pressure. Turn on the water tap and check for leaks.
- Periodically inspect the water supply hose and replace with a new hose if cuts, kinks or leaks are observed.

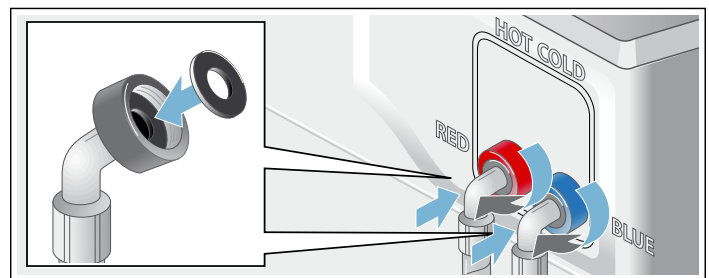


Water connection hoses

- red - Hot water-hose
- blue - Cold water-hose

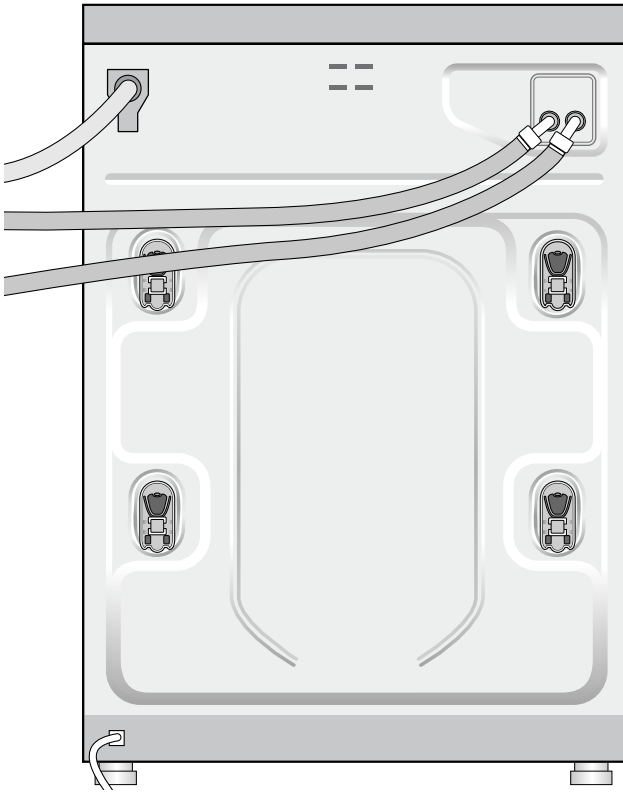


Attach this end to water tap. Hand tighten only.

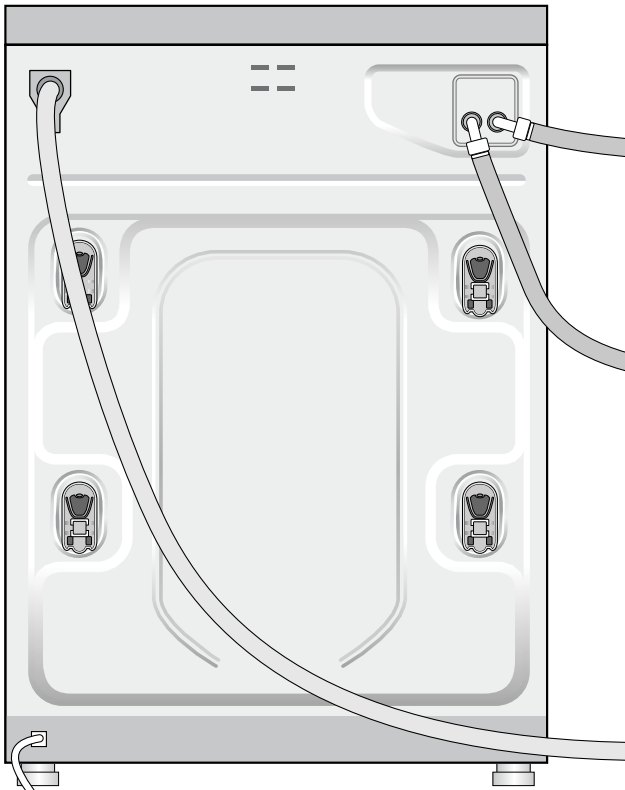


Attach this end of the hose to the back of the washing machine as shown in the following pictures. Be sure to use clamps and route hoses as instructed. Hand tighten only.

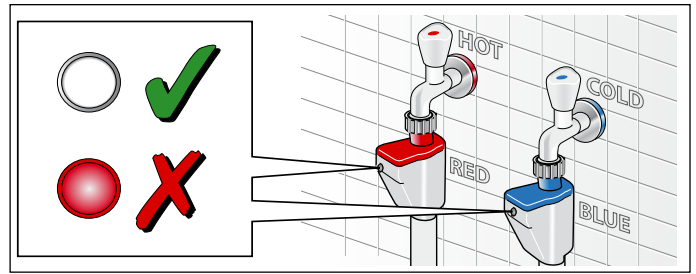
Position hoses as shown when routing hoses to right side of washer (facing from front).



Position hoses as shown when routing hoses to left side of washer (facing from front).



About the AquaShield® Hose



The AquaShield® hose prevents potential flooding in the event the hose develops an internal leak. If the hose leaks, the indicator turns red and water flow is blocked. Once the internal valve in the hose activates (indicator is red) the hose must be discarded. Contact customer service to purchase a replacement.

AquaStop® Plus

The AquaStop® Plus feature detects water leaks on the internal base, shuts down operation and automatically pumps out water so it cannot make contact with the floor. This feature along with the internal mechanical valve of the double-walled AquaShield® hose makes AquaStop® Plus one of the most comprehensive water safety systems available.

Water drain hose connection

NOTICES

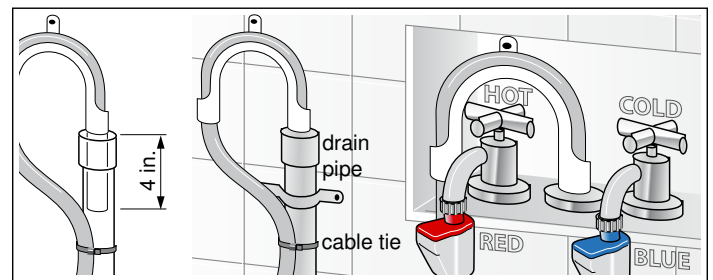
- Do not reuse an old drain hose. Only use the drain hose and parts included with your washer.
- Do not kink or modify the water drain hose.

Height of drain point

Height difference between the floor and drainage point: max. 39 in. (100 cm).

Types of drainage hookups

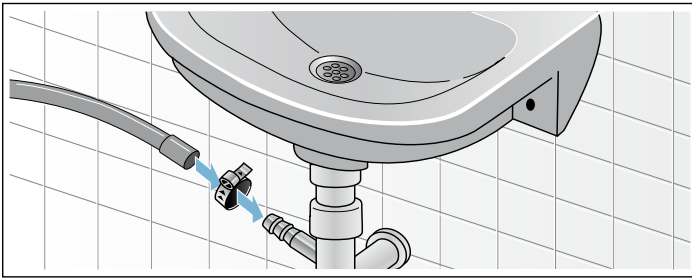
Standpipe



Attach the drain hose to the elbow included with your washer.

Position the elbow on the drain hose 4" from end of hose as shown. Insert this section of the drain hose into the drain pipe. Secure the elbow and hose with a nylon tie strap or the equivalent to keep the hose from coming out of the drain pipe during use.

Sink siphon



Secure the drain hose to the sink siphon using a \varnothing 0.9 - 1.6 in. (20-44 mm) hose clip (available from a hardware store).

Wash Basin

⚠ WARNING

SCALDING

When washing at high temperatures, there is a risk of scalding if you touch hot suds, e.g. when pumping out hot suds into a wash basin.

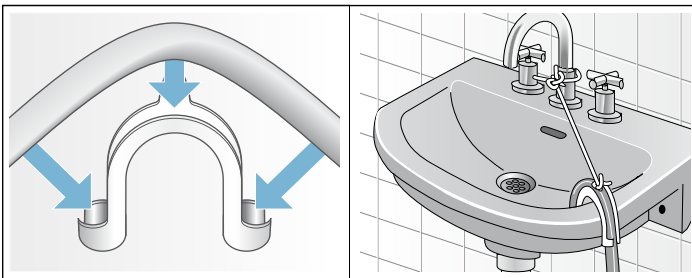
Do not reach into the hot suds.

NOTICE: Appliance damage/damage to textiles

If the end of the drain hose touches the discharge water (water drained from washer) it (the discharge water) can be sucked back into the appliance and may damage the appliance or textiles.

Make sure that:

- There is no stopper in the sink drain.
- The end of the hose does not touch the discharge water.
- The sink drain is free flowing and not partially clogged.



Attach the drain hose securely to the wash basin.

NOTICE: In any multi-story installation, the washer should be installed on a drained floor to prevent water damage to rooms below in the event of a leak.

Leveling the washer

Importance of leveling the washer

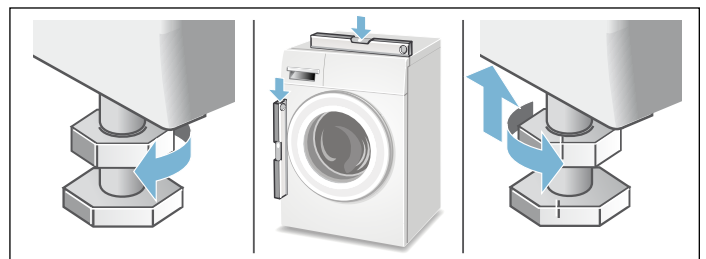
Your new washer uses high spin speeds to remove water at the end of the wash cycle. It is important that your washer is level and that all four washer feet press with equal pressure against the floor. This will help assure the quietest, most vibration-free use of your washer.

Follow these steps:

1. Install the washer on a level and solid surface, preferably in a corner of a room.
2. If the floor is uneven (or unlevel) adjust the washer feet as required to level the washer. Do not place anything under the washer feet to help level the washer.
3. Extend the washer feet no more than is necessary. The more the feet are extended, the more vibration the washer will experience. Start with the washer feet turned all the way in and adjust each foot as necessary.
4. Use a bubble level to check the top of the washer to make sure it is level side to side and front to rear.
5. Press down on each corner of the washer top to make sure the washer doesn't "wobble". There should be no "give" or movement. All four washer feet should press equally against the floor. This is just as important as the washer being level to prevent vibration.
6. When the washer is level and does not wobble, lock the washer feet in place by tightening the locknuts against the washer bottom. Be sure to do this without changing the height of the foot (hold the foot while tightening the locknut).

Procedure for adjusting the washer feet:

1. After determining which washer feet need to be extended, have someone lift up on the washer slightly to take pressure off the foot to be adjusted.
2. Turn the grey plastic foot to extend it downward as far as necessary to raise the corner of the washer the correct amount to level the washer.
3. When the height of the foot is correct, use a 17 mm open end wrench to tighten the locknut against the washer bottom. The locknut should be tight against the bottom of the washer to lock the foot in place.



Electrical connection

⚠ WARNING

ELECTRICAL SHOCK HAZARD

Improper connection of the equipment-grounding conductor may result in electric shock. Have the appliance checked by a qualified technician or licensed electrician if you are in doubt as to whether the washer has been properly grounded.

⚠ WARNING

ELECTRICAL SHOCK HAZARD

To reduce the risk of fire or electrical shock, DO NOT use an extension cord or an adapter to connect the washing machine to the power supply.

⚠ WARNING

ELECTRICAL SHOCK HAZARD

To reduce the risk of electrical shock:

- Only pull out the power cord by the plug end and never by the cable, as this could damage it.
- Never touch or hold the plug end or power cord with wet hands.
- Never unplug the plug end or power cord during operation.

Grounding Instructions

⚠ WARNING

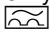
ELECTRICAL SHOCK HAZARD

This appliance must be grounded. In the event of malfunction or breakdown, grounding will reduce the risk of electric shock by providing a path of least resistance for the electric current. This appliance is equipped with a cord that has an equipment grounding conductor and a grounding plug. The plug must be plugged into an appropriate outlet that is properly installed and grounded in accordance with all local codes and ordinances.

- Do not modify the plug provided with the appliance. If the plug will not fit into the outlet have a properly grounded outlet installed by a qualified electrician. Do not cut, remove or bypass the grounding prong on the washer power cord plug.
- The washer power cord plug must be easily accessible when the washer is operating.
- When unplugging or plugging in the washer power cord, grasp the plug end. Do not pull on the cable to unplug the washer.

- The household electrical supply must be suitable for the voltage specification shown on the washer rating plate (located inside the washer door, immediately below the drum opening).
→ *Purchase information; Page 4*
See the table below for connection specifications and fuse/breaker requirements.

Volts	Hertz	Ampers	Watts
240	60	10.5	2,520 max.

- The wiring for the electrical outlet circuit must be sufficient to meet the appliance requirements. Use of a Ground Fault Circuit Interrupter (GFCI) is recommended.
- Protect the power cord from physical damage, such as being twisted, kinked, pinched, caught in a door, or walked upon.
- If the power cord is damaged, it must be replaced by a qualified technician to avoid a fire/shock hazard. Replacement power cords can be purchased through Customer Service.
→ *Customer service; Page 5*
- The washing machine must only be connected to an individual branch circuit via a receptacle which has been properly installed and grounded.
- Make sure that:
 - the power plug fits into the receptacle
 - the wire size is sufficient
 - the grounding system is properly installed
- The power cord may be replaced by an electrician only. Replacement power cords can be purchased from Customer Service. To reduce the risk of fire or electrical shock, DO NOT use an extension cord or an adapter to connect the washing machine to the power supply. If a ground fault circuit breaker is to be used, only use the types marked with the following symbol: . Only this symbol can assure compliance with all current regulations.

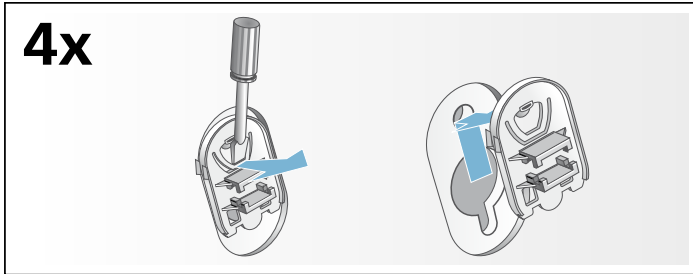
Transporting the washer

Before transporting the washer

1. Disconnect the washer power cord from the wall outlet.
2. Turn off the water supply to the washer.
3. Disconnect water supply lines from the tap.
4. Disconnect the drain hose from the drain location.
5. Install the transport bolt assemblies as shown in the following images.

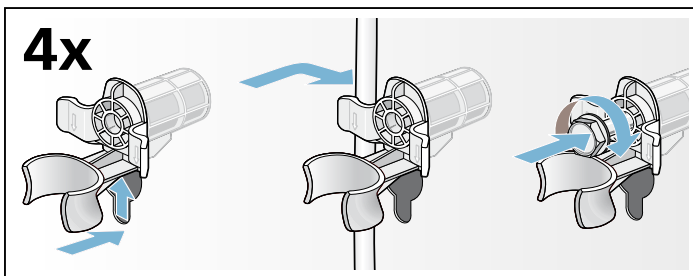
Remove the transport bolt hole covers

1. Remove all four transport bolt hole covers.
2. Pull the tip of the arrow on the cover out slightly to disengage the locking tab.
3. Rotate the cover counterclockwise to remove. Repeat for all 4 transport bolt hole covers.



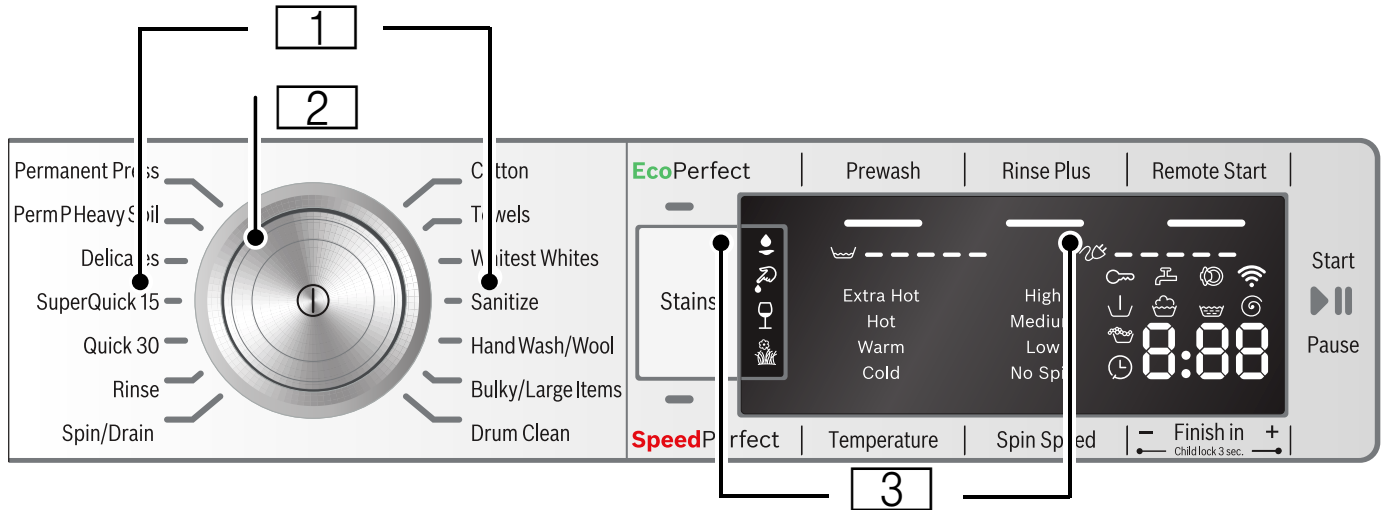
Insert the transport bolt assemblies

1. Each assembly consists of a plastic bushing and a bolt that extends through the bushings. Unscrew the bolt until the threaded end is flush with the end of the plastic bushing.
2. Insert the transport bolt and bushing assembly as shown. The metal housing slides around the bolt through the slot in the plastic bushing as the bushing is slid into place. The open part of the bushing slot should be facing the direction shown to allow the assembly to slide fully into place.
3. When the bolt is in place screw it in until the bolt threads engage the drum. Double check and ensure bolts are screwed into threaded holes and not into cracks or crevices. Repeat the process for all 4 transport bolt assemblies before tightening any all the way. Complete tightening all 4 bolt assemblies until they are each snug in place.



Getting to know your appliance

Control panel



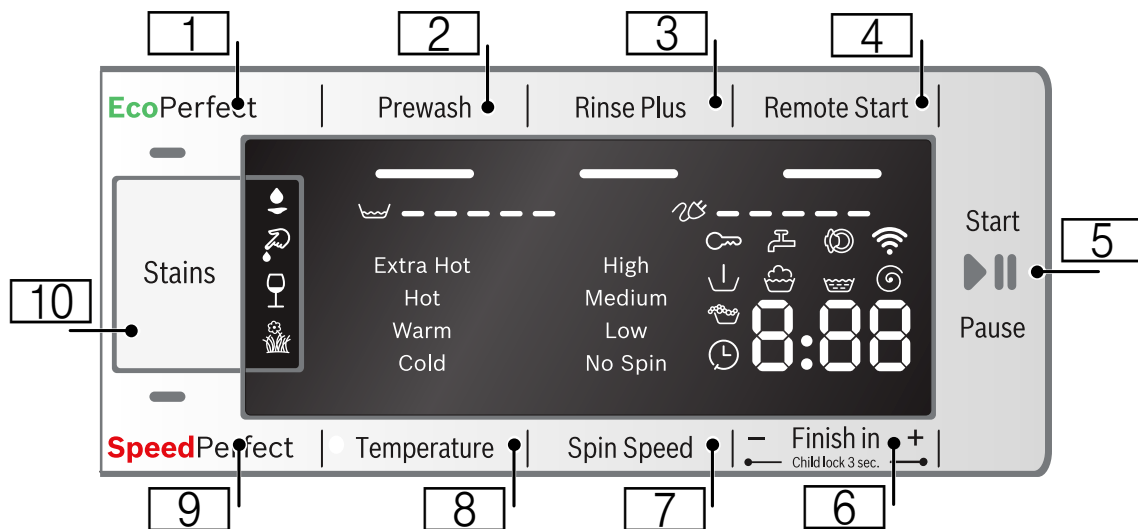
1 Programs

2 Program Selector

Center is pressed to power the appliance ON or OFF and dial turns in both directions to select a program.

3 Display Panel with Buttons

Display area





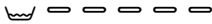
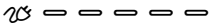







Buttons

Button	Description	Indicator
1	Select EcoPerfect .	—
2	Select Prewash .	—
3	Select Rinse Plus .	—
4	Select Remote Start . Remote start and Home Connect settings	—
5	Select Start/Pause . <ul style="list-style-type: none"> starts or pauses the selected cycle; indicator lamp on (steady) - cycle running, can be paused (if Child lock is not activated); indicator lamp blinking - option settings can be changed; Ready state (door closed, cycle can be started); cycle is paused (press to restart). 	▶
6	Select Finish in . End of program ("Finish in" time) after...h (hours) Press Finish in — and + at once for approximately 3 seconds to activate or deactivate Child lock .	e.g. ⌚ <i>ih</i> ∞
7	Select Spin Speed .	High Medium Low No Spin
8	Select Temperature .	Extra Hot Hot Warm Cold
9	Select SpeedPerfect .	—
10	Select Stains .	👉 (Oils, food based) 👎 (Blood) 🍷 (Red wine) 🌿 (Grass)

For a detailed description, see → *Optional program settings; Page 36*

Other indicators

Indicator	Description
	Lit: Child lock activated Flashing: A change to the programs or options is not allowed because Child lock is activated. Flashing will stop after a few seconds.
	Flashing: Tap not turned on, no water pressure
	Lit: The appliance door can be opened. Flashing: Door locking or unlocking is ongoing.
	OFF: Wi-Fi is off. Flashing: The appliance is trying to connect to your home network or broadcasting "Home Connect" hot-spot. Lit: Wi-Fi is on and the appliance is connected to your home network.
Information on energy and water consumption:	
	Water consumption display
	Energy consumption display
Washing cycle status sequence:	
	Prewash
	Wash
	Rinse
	Spin
e.g. <i>1:40</i>	Expected program duration in hours and minutes
-P-	Pause
-0-	Program end
Further information:	
	Lit: Excess foam detected
e.g. <i>E: 00 <-> - 00</i>	Fault display
e.g. <i>H: 00</i>	Hint display

Operating Instructions

▲ WARNING

To reduce the risk of fire, electric shock, or injury to persons, read the Important Safety Instructions and Operating Instructions before operating this appliance.

Before using the washer for the first time

Check to make sure your washer has been installed properly by following the installation instructions in this manual.

→ *Installation instructions; Page 12*

Check the machine. Never connect the utilities (power or water) to or start a damaged machine! Contact customer service!

Check to be sure your household electrical system voltage and the voltage specifications on the washing machine rating plate correspond.

Check to be sure the washer hot and cold water supply taps are turned on.

Turning the washing machine on and off

Center of the program selector is pressed to turn the appliance on or off.

Before loading your first load of laundry

Your new washing machine was tested before leaving the factory. This process involves running various wash cycles. As a result, a small amount of water may remain in the tub and drainage system. Run a **Drum Clean** cycle with no laundry to clean the system before your first load of laundry.

First add 1 to 2 tablespoons of detergent to the main-wash chamber II. Then run the **Drum Clean** cycle.

Wait for the cycle to finish.

Using the program selector to choose a wash program

NOTICE: If the Child lock is activated, you must deactivate it before you can select a program.

→ *Child lock; Page 37*

Use the program selector to select the desired wash program. The dial turns in both directions and when a cycle is selected its time duration appears in the display. The related preset options (temperature, spin speed, etc.) lights are activated.

Selecting optional program settings

By selecting the optional program settings, you can adjust the washing process to better suit the items you are washing.

The optional program settings can be selected and/or deselected depending if they are allowed (not all settings are allowed for all programs) and the cycle's progress.

The indicator lamps of the buttons light up if the setting is active.

→ *Program selection table; Page 34*

→ *Optional program settings; Page 36*

Loading the laundry

▲ WARNING

To avoid risk of explosion! Laundry items that have been pretreated with any material containing solvents (e.g. stain remover, cleaner's solvent) must be rinsed out thoroughly by hand before they are placed in the washing machine.

Loosen the laundry being loaded and mix small and large items

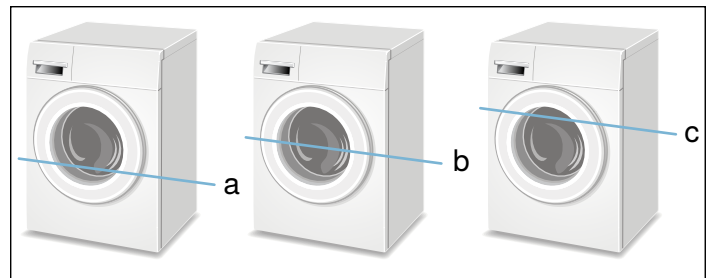
Unfold the sorted items and place them loosely in the drum. Mix small and large items to help them better distribute in the drum during the spin cycle.

Tip: Do not exceed the maximum load recommended for the type of wash. Overloading will cause poor wash results and will cause wrinkles.

Recommended Load Size

Recommended maximum load size can be found:

→ *Standard features and helpful information; Page 9*



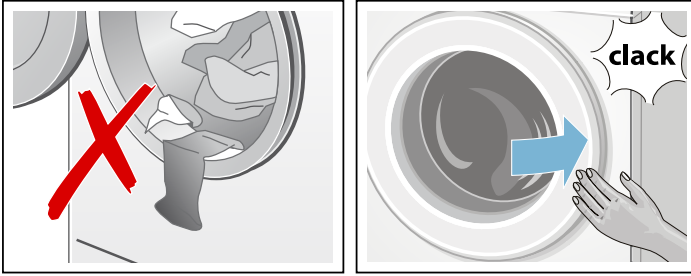
a **1/3 Load** - woolsens, delicates, silk

b **1/2 Load** - cotton, synthetic fabrics, or knitted textiles

c **Full Load** - cotton and linen

Tips

After loading, close the door carefully so as not to trap any items between the door and the rubber seal. The door should close easily and should not be forced to close.



Foreign objects left in the drum may damage laundry. Before inserting any laundry, check to make sure no foreign objects are in the drum.

Filling the detergent and additives compartments

NOTICE: Damage to the appliance

Detergent and laundry pre-treatment aids (e.g. spot remover, pre-wash sprays, etc.) can cause damage if they come into contact with the surfaces of the washer. Do not let these substances touch the surfaces of the washer. If necessary, wipe off spray traces and other traces/drops immediately with a soft cloth.

Measuring

Measure out the detergent and laundry care products according to:

- the water hardness; consult your water utility company for details
- the manufacturer's instructions on the packaging
- quantity of laundry
- amount of soiling (heavy, normal, light)

Filling

▲ WARNING

IRRITATION OF EYES/SKIN!

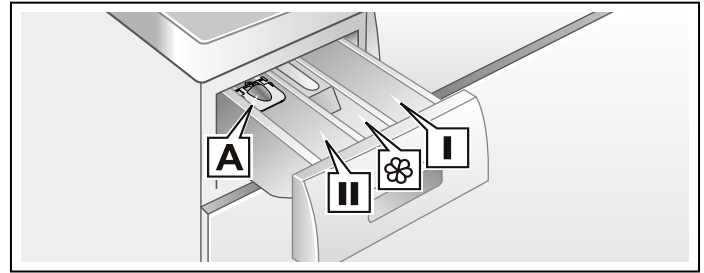
When opening the detergent drawer during operation, detergent or laundry care products may splash out.

Open the drawer carefully.

In case of contact with detergent or laundry care products, rinse the eyes or skin thoroughly.

In case of accidental ingestion, consult a doctor.

Pour the detergent and laundry care product into the appropriate chambers:



Liquid detergent insert A for liquid detergent

Pre-wash chamber I Detergent for pre-wash

Softener chamber II Fabric softener, starch
Do not exceed max

Tips

Do not pour fabric softener directly into the wash load.

Fabric softener is automatically dispensed during the last rinse cycle.

Dilute concentrated or thick fabric softener or fabric conditioner with water. Use 2/3 water to the amount of softener to prevent blockage of the siphon.

Main-wash chamber II Detergent for main wash, water softener, spot remover

NOTICE: Do not use Chlorine based or color safe bleaches as these could damage the washer. Detergents and/or solid bleaching agents based on Oxygen (like Sodium Percarbonate) are safe to use.

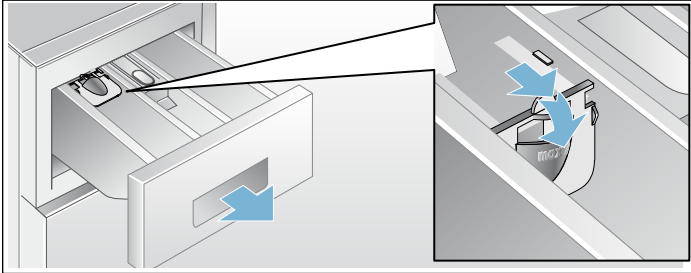
1. Open the detergent dispenser tray.
2. Add detergent or additive.
Avoid overfilling the compartment to prevent early dispensing.
3. Close the detergent dispenser tray completely before starting the wash cycle.

Tip: DO NOT operate the washer without the detergent compartment in place and fully closed.

Liquid detergent insert

To measure liquid detergent:

1. Pull out the detergent dispenser tray.
2. Push the liquid detergent insert forward and down as shown.
3. Pour liquid detergent into the chamber and do not exceed the maximum mark.
4. Reinsert the tray into its compartment.



NOTICE: Do not use the liquid detergent insert with gel-type detergents and powdered detergents or for cycles with pre-wash or selected "Finish in" time.

Starting the program

Press the **Start/Pause** button. Indicator lamp lights up and the program starts.

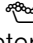
NOTICE: If you want to protect the cycle against inadvertent adjustment, select the Child lock.

→ *Child lock; Page 37*

The display panel shows the "Finish in" time before the program starts or the program length and the program progress symbols when the washing program has started.

→ *Display area; Page 21*

Foam detection

If you use too much detergent, too much foam may be formed during the wash cycle. The symbol  lights up. Foam may be also leaking out from the detergent drawer. In order to remove the foam, the appliance automatically activates additional rinse cycles. This extends program duration.

NOTICE: To prevent excess foaming use less detergent in subsequent wash loads.

Selecting a different program


If you have inadvertently started the wrong program, you can change this as follows:

1. Press **Start/Pause**.
2. Select another program.
3. Press **Start/Pause**. The new cycle starts from the beginning.

Pausing/Adding a garment to the cycle

Pausing the wash cycle can be useful for several purposes.

e.g. for soaking → *Soaking; Page 35*

Press **Start/Pause**. The indicator lamp  is blinking. Wash load will soak in water until continued by pressing **Start/Pause**.

For adding a garment after the cycle begins.

1. Press **Start/Pause**. Door will unlock when safe to do so.
2. Open door carefully and add or remove laundry item.

NOTICE: You can do this as long as the **Start/Pause** indicator flashes and it is safe to do so.

3. Close door.
4. Press **Start/Pause**.
The cycle continues.

NOTICE: If the cycle is paused but the door will not unlock it could be for safety reasons (high water level, water temperature or drum speed).

Cancel program

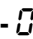
For cycles with a high temperature:

1. Press **Start/Pause**.
2. Cool the laundry off: Select **Rinse**.
3. Press **Start/Pause**.

For cycles with a low temperature:

1. Press **Start/Pause**.
2. Select **Spin/Drain** and **Spin Speed** option to **No Spin**.
3. Press **Start/Pause**.

Program end

-  - appears in the display field and the Start/Pause button indicator lamp is off.

NOTICE: If this symbol  appears in the display, the washer has detected too much foam and it automatically adds an additional rinse cycles to remove the foam.

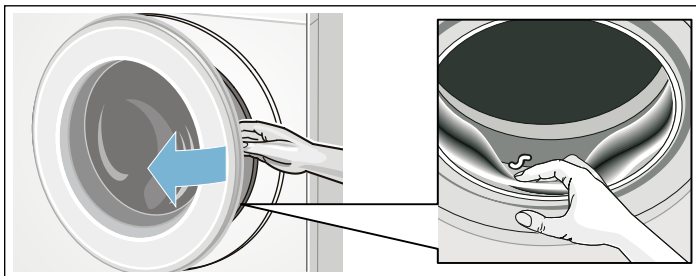
Use less detergent the next time you run the washer with the similar load.

Removing laundry/switching the appliance off

1. Open the front door of the washer and remove the laundry.
2. Press the center of Program Selector to switch off the appliance.
3. Turn off the water taps.

NOTICES

- Do not leave any laundry in the drum. It can shrink or become discolored by the next laundry load.



- Remove any remaining items from the drum and rubber gasket.
- Leave the front door and detergent drawer open so that any remaining water can dry.
- Always wait for the end of the cycle before switching off the appliance; otherwise the appliance may still be locked. If locked, switch the appliance on and wait until it unlocks.
- If the display panel switches off and the Start/Pause button indicator is blinking at the end of a program, the Energy-saving mode is active. To activate the display, press any button.

Home Connect

This appliance is Wi-Fi enabled and can be controlled remotely via a smartphone or tablet PC.

With the Home Connect app, you can use your smartphone or tablet PC to do the following on this appliance:

- Select and start programs.
- Change program settings.
- Query program status.
- Change appliance settings.
- Switch off appliance.

Before you can use the Home Connect functions, you will need to install the Home Connect app on your smartphone or tablet PC, register, connect your appliance once automatically **or** manually to your home network, and then connect your mobile device to your appliance via the Home Connect app.

You can find information about the app on our Home Connect website www.home-connect.com.

The availability of the Home Connect function depends on the availability of Home Connect services in your country. Home Connect services are not available in every country. You can find more information here www.home-connect.com.

Notes

- Observe and comply with all safety instructions in manuals and apps when operating appliances via the app while you are away from them. You must also follow the instructions in the Home Connect app.
- You cannot use the Home Connect app to change programs or options while the appliance is operating. However, you can see any changes made at the appliance via the app display.


Connecting to your home network automatically

If your router has a WPS function, you can connect the appliance to your home network automatically.

If your router does not have a WPS function, you will need to connect the appliance to your home network manually.


1. Switch the appliance on.
2. Press and hold **Remote Start** for at least 3 seconds. *Aut* (connect automatically) will appear on the display.



3. Press **Start/Pause** to connect to the network.  will flash on the display.

The appliance will now try to connect to your home network.

4. Activate the WPS function on your home network router within the next 2 minutes.

If the appliance has connected to your home network successfully, *con* (connected) will appear on the display and  will be lit continuously.

5. Press **Remote Start** briefly to exit the Home Connect settings.

Note: If a connection could not be established, check whether your appliance is in range of your home network. Try connecting automatically again or connect your appliance manually.

Connecting to your home network manually

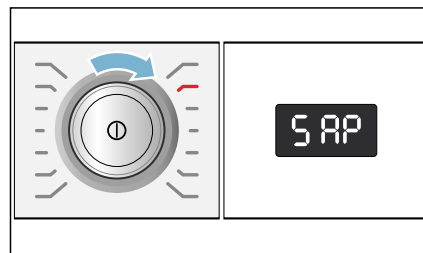
If your appliance has already been automatically connected to your home network, you can skip the manual connection step.


If your router does not have a WPS function, you will need to connect the appliance to your home network manually.

1. Switch the appliance on.
2. Press and hold **Remote Start** for at least 3 seconds. *Aut* (connect automatically) will appear on the display.



3. Turn the program selector to position 2. *SAP* (connect manually) will appear on the display.



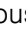
4. Press **Start/Pause** to connect to the network.  will flash on the display.

The appliance will now set up its own WiFi network with the name (SSID) **Home Connect**. You can access it on your smartphone or tablet PC.

- Open up your Wi-Fi settings on your mobile device.
- Connect your smartphone or tablet PC to the **Home Connect** WiFi network and enter the password (key) "**HomeConnect**".

Note: The connection process may take up to 60 seconds.

- Once you have connected successfully, open the Home Connect app on your smartphone or tablet PC.
- In the Home Connect app, enter the name (SSID) and password (key) for **your home network** and then select **Transfer to appliance**.

If the appliance has connected to your home network successfully, **con** (connected) will appear on the display and  will be lit continuously.

- Press **Remote Start** briefly to exit the Home Connect settings.

Notes

- If a connection could not be established, **Err** (fault) will appear on the display. Check whether your appliance is in range of your home network. Try connecting manually again.
- If your smartphone or tablet PC is still connected to the **Home Connect** network, you will need to connect it to your home network first.

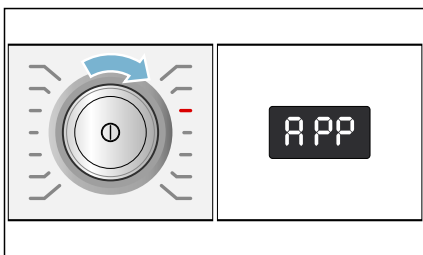
Connecting to the Home Connect app

If your appliance is connected to your home network, you can connect it to the Home Connect app.

- Switch the appliance on.
- Press and hold **Remote Start** for at least 3 seconds. **Aut** (connect automatically) will appear on the display.



- Turn the program selector to position 3. **APP** (connect to app) will appear on the display.



- Press Start/Pause .
The appliance will now connect to your Home Connect app.

- Open the Home Connect app on your smartphone or tablet PC and select **Connect** to add your new appliance.

Note: If your smartphone or tablet PC is still connected to the Home Connect network, you will need to connect it to your **home network** first.

- If your appliance is not shown automatically, select **Appliance search** and then **Connect an appliance** in the Home Connect app.
- Carry out the last steps in the Home Connect app to connect your appliance.

If the appliance has connected to your home network successfully, **con** (connected) will appear on the display.

- Press **Remote Start** briefly to exit the Home Connect settings.

Note: If a connection could not be established, **Err** (fault) will appear on the display. Check whether your smartphone or tablet PC is in range of your home network and whether it is connected to it. Try connecting to the Home Connect app again.

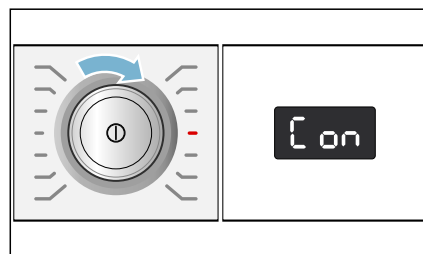
Activating/deactivating Wi-Fi

You can switch the Home Connect function on your appliance on or off permanently at any time.

- Switch the appliance on.
- Press and hold **Remote Start** for at least 3 seconds. **Aut** (connect automatically) will appear on the display.



- Turn the program selector to position 4. **Con** (WiFi function) will appear on the display.



- Press Start/Pause .
If **on** (switched on) appears on the display, the WiFi function on the appliance has been activated. If **off** (switched off) appears on the display, the WiFi function is not active.
- Press **Remote Start** briefly to exit the Home Connect settings.

Notes

- If you connect to your home network, Wi-Fi is activated automatically.
- If Wi-Fi is activated, the appliance will not switch itself off automatically.
- If Wi-Fi is switched off on the appliance, it is not possible to use the Home Connect app to start or control the appliance remotely.
- If Wi-Fi is switched off and your appliance was previously connected to your home network, this connection will be re-established automatically when Wi-Fi is switched back on.

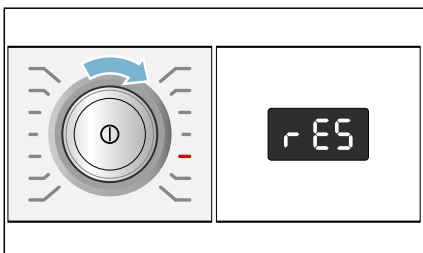
Resetting your network settings

You can clear the network settings and break the connection to your smartphone or tablet PC by resetting the network settings.

1. Switch the appliance on.
2. Press and hold **Remote Start** for at least 3 seconds. *Rut* (connect automatically) will appear on the display.



3. Turn the program selector to position 5. *rES* (reset network settings) will appear on the display.



4. Press Start/Pause . *YES* (yes) will appear on the display.
5. Press Start/Pause to confirm. *End* (end) will appear on the display. The network settings have now been reset. Your appliance is no longer connected to your home network or the Home Connect app.

6. Press **Remote Start** briefly to exit the Home Connect settings.

Notes

- If the network settings could not be reset, *Err* (fault) will appear on the display.
- If you want to operate the appliance via the Home Connect app again, you will need to reconnect it to your home network and to the Home Connect app either automatically or manually.

Updating the software

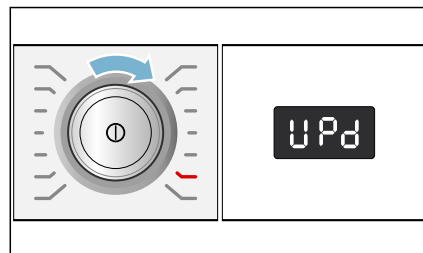
You can update the Home Connect software on your appliance. As soon as a new update is available, *UPd* (update) will appear on the display.

You can install the update directly via the message on the display or, alternatively, you can do this manually.

1. Switch the appliance on.
2. Press and hold **Remote Start** for at least 3 seconds. *Rut* (connect automatically) will appear on the display.



3. Turn the program selector to position 6. *UPd* (update) will appear on the display.



Start/Pause will flash if a software update is available.

4. Press Start/Pause . *YES* (yes) will appear on the display.
5. Press Start/Pause to confirm. Update installation will now start. This process may take several minutes. Do not switch the appliance off while updates are being installed.
6. Press **Remote Start** briefly to exit the Home Connect settings.

Information on data protection

When your appliance is connected to a WLAN network that is connected to the Internet for the first time, your appliance transmits the following categories of data to the Home Connect server (initial registration):

- Unique appliance identification (consisting of appliance codes as well as the MAC address of the installed WiFi communication module).
- Security certificate of the WiFi communication module (to ensure a secure data connection).
- The current software and hardware version of your domestic appliance.
- Status of any previous resetting to factory settings.

This initial registration prepares the Home Connect functions for use and is only required when you want to use these Home Connect functions for the first time.

Note: Home Connect functions can be used only in conjunction with the Home Connect app. Information on data protection can be accessed in the Home Connect app.

Declaration of Conformity

BSH Home Appliances Group hereby declares that the appliance which features Home Connect functionality is in accordance with the essential requirements and other relevant provisions of the following Directives.

Wi-Fi® Module FCC/IC Statements

Model: COM1

FCC ID: 2AHES-COMGEN1

IC: 21152-COMGEN1

The Home Connect module is a communication device designed to provide communication between appliances and smart devices.

This module is integrated at the factory, under direct control of B/S/H Home Appliances Corporation, and is not user serviceable or upgradable. At least 20cm separation distance should be maintained from device to user.

FCC COMPLIANCE STATEMENT

▲ CAUTION

Changes or modifications not expressly approved could void your authority to use this equipment.

This device complies with Part 15 of the FCC Rules. Operation to the following two conditions:

- This device may not cause harmful interference and
- this device must accept any interference received, including interference that may cause undesired operation.

INDUSTRY CANADA STATEMENT

This device complies with Industry Canada licence-exempt RSS standard(s). Operation is subject to the following two conditions:

- This device may not cause interference and
- this device must accept any interference, including interference that may cause undesired operation of the device.

WiFi is a registered trademark of Wi-Fi Alliance.

Laundry

Preparing the laundry

NOTICE: Damage to the appliance/fabrics

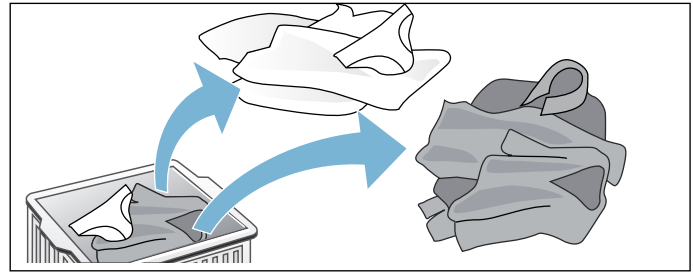
Foreign objects (e.g. coins, paper-clips, needles, nails) may damage the laundry or components in the washing machine.

Therefore, note the following tips when preparing your laundry:

- Empty all pockets to ensure no loose debris (coins, keys, other hard objects) are placed in the washer drum.
- Close any fasteners (such as zippers and hooks) that could cause laundry to catch or become entangled.
- Remove any foreign objects or non-washable parts.
- Turn trousers and knitted wear inside out prior to washing.
- Place small items (such as socks and handkerchiefs) and underwired bras into a mesh bag prior to washing.
- When washing laundry to be tumble-dried, use the correct amount of detergent and textile care products as specified in the manufacturer's instructions. Some detergents and textile care products, starch or softeners may contain chemicals that may become deposited on the moisture sensors negatively affecting their function and the drying result.

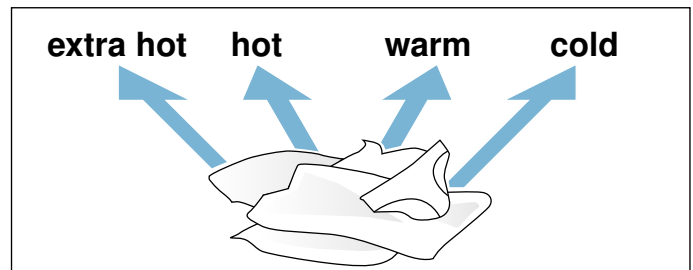
Sorting the laundry

Sort laundry items according to color, degree of soiling and recommended wash temperature range.



Wash white items separately from colored items. Otherwise, white items may tend to become grey.

Observe laundry care labels



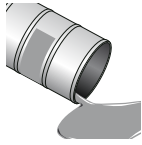
Check the care labels on each laundry item prior to washing. Choose an appropriate wash cycle that does not exceed the temperature recommended.

Determining degree of soiling

- **Light soiling**
No visible soiling or stains, but may have absorbed some odor. This could include light weight summer clothing such as T-shirts, shirts, or blouses worn only once. Also to freshen bed linen or guest towels.
- **Normal soiling**
Visible soiling and/or a few light stains. This could include clothing such as T-shirts, shirts, or blouses that have been sweated in or worn several times. Also tea towels, hand towels or bed linen used for up to one week or more. Curtains without stains that have not been washed for up to a half year.
- **Heavy soiling**
Visible soiling and stains. This could include kitchen towels, fabric napkins, baby bibs, children's outer clothing or football jerseys and shorts stained with grass or dirt. It could also include working clothes such as overalls and jeans and other clothing worn for outside work and activities.

Identifying and treating stains

For mild and recent stains the **Stains** button for food based grease/oils, blood, red wine and grass can be used. For more stubborn and set in stains the below methods can be of help.



Oils and grease: normal body skin oil, cooking oils/fats, sauces, mineral oil, or wax (containing fat/oil). Treatment: scrape residue from fabric. Pretreat. Wash using hottest water safe for the fabric. For heavy stains, apply non-flammable dry cleaning fluid to back of stain, replacing towels under stain frequently. Rinse thoroughly and wash using hottest water safe for the fabric.



Beverages and juices: tea, coffee, red wine, fruit, vegetables. Treatment: Pretreat stain. Wash using cold water.



Proteins and carbohydrates: blood, egg, milk, starch. Treatment: Rinse immediately in cold water. If stain remains, soak in cold water with an enzyme prewash.



Soot, dirt, sand (pigments), red clay (such as soiling of tennis clothing). Brush off residue if present. Pretreat or soak with a laundry product containing enzymes.

Removing stains

- Remove/pretreat stains as soon as possible after they have occurred.
- Dab with a soapy solution. Do not rub.
- Select an appropriate wash cycle and wash the item. Several washing cycles may be required in order to remove stubborn or dried-in stains.

Laundry detergents and additives

Adding the correct amount of HE detergent

⚠ WARNING

To avoid risk of poisoning, keep detergents and cleaning products out of the reach of children.

Avoid overuse of detergent.

Measure out the detergent according to:

- The amount of laundry.
- The degree of soiling.
→ *Sorting the laundry; Page 31*
- The water hardness. This information can be obtained from your local water authority. Soft water requires less detergent.

Too much detergent

- Excessive foam will reduce washing agitation and cause poor washing and rinsing results.
- Not environmentally compatible (wastes detergent and is not good for the environment).

Too little detergent

- Laundry will not be washed clean.
- Eventually the laundry will take on a grey and hard appearance. Greyish-brown grease spots may stain the laundry, heating elements may begin to calcify.

The fabric care label is important for selecting the correct detergent, temperature and treatment of the laundry.

If desired you can visit the following sites for additional information on detergents and fabric care.

→ www.textileaffairs.com or www.cleanright.eu

- **Standard detergent with optical brighteners**

Suitable for white laundry made from linen or cotton
Program: Cotton / Cold - Extra Hot

- **Detergent for colors without bleach or optical brighteners**

Suitable for colored laundry made from linen or cotton
Program: Cotton / Cold - Hot

- **Detergent for colors/delicates without optical brighteners**

Suitable for colored laundry made from easy-care and synthetic fabrics.
Program: Permanent Press / Cold - Hot

- **Detergent for delicates**

Suitable for delicate, fine fabrics, silk or viscose
Program: Delicates / Cold - Hot

- **Detergent for woolens**

Suitable for wool

Hand Wash/Wool program: Cold - Warm

Saving energy and reduce detergent

For light and normal soiling, you can save energy (lower washing temperature) and detergent.

Saving	Soiling/note
Reduced temperature and detergent quantity as per the recommended dosage	Light e.g.: <ul style="list-style-type: none">• Light summer/sports clothing (worn for a few hours)• T-shirts, shirts, blouses (worn for up to one day)• Guest bed linen and hand towels (used for one day) No visible dirt or stains. Clothing has taken on some body odor.
Temperature as per the care label and detergent quantity as per the recommended dosage for heavy soiling	Normal e.g.: <ul style="list-style-type: none">• T-shirts, shirts, blouses (sweat soaked, worn a few times)• Towels, bedding (used for up to one week) Visible dirt or a few light stains.
	Heavy Dirt and/or stains clearly visible, e.g. tea towels, baby items, work clothing

NOTICE: When measuring the amount of all detergents/additives/care products and cleaning agents, please always check the manufacturer's instructions and information.

Program selection table

Programs	Max. Load up to:	Selectable program settings, default settings (bold)		Type of laundry	Optional program settings; Information
		Temperature	Spin speed		
Cotton	full load	Extra Hot Hot Warm Cold	High	Sturdy fabric, cotton or linen fabric that withstands very hot water	SpeedPerfect, EcoPerfect, Rinse Plus, Prewash, Stains
Towels	1/2 load	Extra Hot Hot Warm Cold	High Medium Low	Durable, cotton towels; especially terrycloth type towels	SpeedPerfect, EcoPerfect, Rinse Plus, Prewash, Stains
Whitest Whites	full load	Extra Hot Hot Warm Cold	High Medium Low	White sturdy fabric, cotton or linen fabric that withstands very hot water	Rinse Plus, Prewash, Stains
Sanitize	1/2 load	Extra Hot	High Medium Low	Sturdy fabric, cotton or linen fabric that withstands very hot water	SpeedPerfect, EcoPerfect, Rinse Plus, Prewash, Stains longer wash and rinse with more water for especially sensitive skin
Hand Wash/Wool	1/3 load	Hot Warm Cold	Medium Low No Spin	Hand and machine washable wool/wool blend fabrics	Especially gentle washing cycle to avoid shrinkage, long cycle pauses (clothing rests in suds and water)
Bulky/Large Items	full load (1 item)	Extra Hot Hot Warm Cold	High Medium Low	NOTICE: Wash large items separately. Use a detergent designed for delicates and follow the instructions on the item's care label. Use detergent sparingly.	SpeedPerfect, EcoPerfect, Rinse Plus
Drum Clean	empty		High	Special cycle for cleaning the drum	
Spin/Drain	full load		High Medium Low No Spin	Extra spin with selectable speed	Draining of the rinsing water Draining of the rinsing water without extra spin at "No Spin"
Rinse	full load		High Medium Low No Spin	Extra rinse with spin	Rinse Plus

Tips

Do not wash new multicolored laundry together with other laundry.

The cycles are time-controlled for lightly soiled fabrics. If fabrics are heavily soiled, reduce the load.

Rinse cycles use cold water only.

Programs	Max. Load up to:	Selectable program settings, default settings (bold)		Type of laundry	Optional program settings; Information
		Temperature	Spin speed		
Quick 30 (approximately 30 minute cycle)	1/2 load	Hot Warm Cold	High Medium Low	Easy-care fabrics made of cotton, linen, synthetic fibers or blended fabrics; suitable for lightly soiled laundry	
SuperQuick 15 (approximately 15 minute cycle)	1/4 load	Hot Warm Cold	High Medium Low	Extra-short program of approximately 15 minutes, suitable for small item of lightly soiled laundry	
Delicates	1/4 load	Hot Warm Cold	Medium Low No Spin	For delicate, washable fabrics, e.g. made of cotton, satin, synthetic fibres or blended fabrics (e.g. curtains) bulky items (e.g. comforters)	SpeedPerfect, EcoPerfect, Rinse Plus, Prewash, Stains
Perm P Heavy Soil	1/2 load	Hot Warm Cold	High Medium Low	Cotton, linen synthetic or blended fabrics	SpeedPerfect, EcoPerfect, Rinse Plus, Prewash, Stains
Permanent Press					

Tips


Do not wash new multicolored laundry together with other laundry.

The cycles are time-controlled for lightly soiled fabrics. If fabrics are heavily soiled, reduce the load.

Rinse cycles use cold water only.

Starching

NOTICE: Laundry must not be treated with fabric softener.

Starching is possible in all wash programs if liquid starch is used. Measure starch into compartment  in accordance with the manufacturer's instructions (clean first if necessary).

Dyeing/bleaching

Dye should only be used in normal household quantities. Salt may damage stainless steel. Always follow the dye manufacturer's instructions.

Do **not** use the washing machine to bleach clothes.

Soaking

1. Pour soaking agent/detergent into compartment **II** in accordance with the manufacturer's instructions.
2. Turn the program selector to **Cotton** program and select **Cold** temperature.
3. Press **Start/Pause**.
4. After approximately ten minutes, press **Start/Pause**.
5. After the required soaking time, press **Start/Pause** again to continue or change the program.

NOTICES

- Load laundry of the same color.
- No additional detergent is required; the soaking solution is used for washing.

Optional program settings

At the factory, temperature and spin speed options, and cycle duration ("Finish in" time) are pre-set for all cycles. After selection of the cycle, these values are displayed in the display field.

EcoPerfect

Energy optimised washing by reducing the temperature while achieving a washing result that is consistent with the selected program, without the EcoPerfect setting.

Prewash

For heavily soiled washing. Pour 1/3 of normal detergent amount into pre-wash chamber I and remaining 2/3 into main wash chamber II.

Rinse Plus

This feature adds additional rinses to selected program which is helpful for locations with soft water supplies or to generally improve rinsing results. It will increase the program duration.

Remote Start

Briefly pressing the **Remote Start** button activates or deactivates the Remote start function. Activating the Remote start function enables the appliance to be started remotely via the Home Connect app.

NOTICES

- Remote start can only be activated if the appliance door is closed and the appliance is connected to your home network.
- Remote start will be deactivated in the following circumstances:
 - The door is opened.
 - There is a power failure.
 - The **Remote Start** button was briefly pressed again deactivating it.
 - The center of the Program Selector was pressed switching off the appliance.
 - Once the program has ended.
 - A program was not started within a 24 hour period after activating the Remote start function.
 - Any button was pressed or the program selector was turned on the control panel.

Pressing and holding the **Remote Start** button for at least 3 seconds enters Home Connect settings.

Finish in

The program end (Finished in) time can be set in one hour increments to a maximum of 24 h (hours). After selecting the desired washing program (at the dial) but before pressing the Start/Pause button, press the Finish in button until the desired time is displayed, e.g. 8 h. Press the Start/Pause button to start the washer.

NOTICE: The cycle duration is included in the set Finish in time.

Here is an example of a 1hr:30min cycle time and an 8 h Finish in time.

8 h is displayed (until the Energy-saving mode activates) and counts down (approximately 6hr:30min) until the washing cycle begins (at 1hr:30min) then the cycle duration 1:30 is displayed and began. Total time approximately 8 hours.

Spin Speed

Before and during the cycle, you can change the spin speed range depending on the cycle progress.

Touch the appropriate button until the desired setting is displayed.

No Spin: This option eliminates the final spin and the load remains saturated with the final rinse water. The pump is activated to remove all residual water.

→ *Program selection table; Page 34*

Temperature

Before and during the cycle, you can change the default temperature range depending on the cycle progress.

Press the appropriate button until the desired setting is displayed.

The maximum temperature range that can be set depends on the cycle selected.

→ *Program selection table; Page 34*

SpeedPerfect





For washing in a shorter time with a washing result comparable to that of the standard program.

NOTICE: Do not exceed the maximum load.

→ *Program selection table; Page 34*

Stains

There are four types of stain to choose from:

	Oils, food based
	Blood
	Red wine
	Grass


The washer adjusts the average washing temperature, drum movement and soaking time to the specific type of stain. Hot or cold water, gentle or intensive washing and long or short soaking ensure that the wash-program sequence is specially adapted to each type of stain. This makes sure that stains are treated in the best possible way.

NOTICE: Pressing and holding the button automatically runs through the set values.

Appliance settings

Child lock

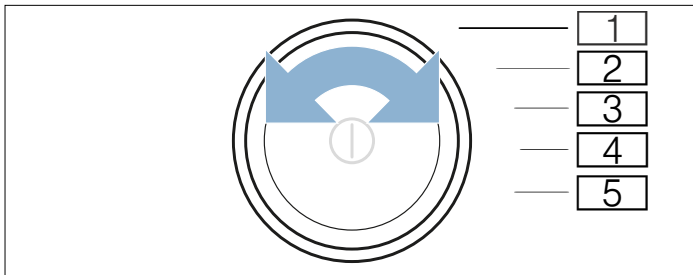
You can secure the appliance against inadvertent changing of the set functions. To do this, activate the Child lock after cycle start.

To **Activate/Deactivate**, press **Finish in** — and + for approximately 3 seconds. In the display field, you will see the  symbol light indicating the Child lock is active.

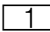
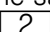
NOTICE: The Child lock will remain activated after the end of the cycle and the door will remain locked. Even switching the appliance off and on will keep the door locked and will not deactivate the Child lock. You must deactivate Child lock and, if necessary, activate it again.

Activating setting mode

In order to change the default appliance settings described below, you will first need to enter or activate setting mode.



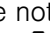

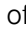

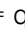


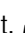
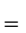


To enter or activate the setting mode:

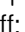
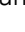
1. Switch on the appliance. The indicator lamp of the program on position 1 () lights up.
2. Press **Temperature** button and, at the same time, turn the program selector to position 2 (

The setting mode is now activated.


Changing the audible signal volume

You can adjust the volume of audible notification signals (that indicate that a program has ended, for example) and audible button signals by turning the program selector to the following positions:

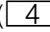


- 2 () : Audible notification signal volume
selectable values:  = off,  = quiet,  = medium, 
- 3 () : Audible button signal volume
selectable values:  = off,  = quiet,  = medium,  = loud,  = very loud

1. Turn the program selector to the required position.
2. Use the **Finish in** + or — button to set the volume you require ( = off;  = very loud).

Switching the automatic switch-off function on/off

If the appliance is not used for an extended period, it may automatically switch itself off until a program starts or when a program has ended in order to save energy. It can be switched back on again at any time by pressing the power button .

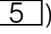
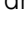
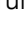
You can switch the appliance's automatic switch-off function on or off as follows:

1. Turn the program selector to position 4 (- 2. Use the **Finish in** + or — button to switch the appliance's automatic switch-off function on () or off (

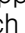
NOTICE: The automatic switch-off function cannot be activated if Wi-Fi is activated.

Switching the Drum Clean reminder on/off

A reminder to clean the drum is indicated by a light adjacent to the **Drum Clean** program. In order to switch the drum clean reminder on (or off, if desired):

1. Turn the program selector to position 5 (- 2. Use the **Finish in** + or — button to switch the drum clean reminder on () or off (

Exiting setting mode

Once you have applied all the settings, press the power button  to switch off the appliance.

The settings you have selected will be saved and will take effect the next time the appliance is switched on.

Cleaning and maintenance

Your appliance is designed to give you years of service. Observe the following instructions to maintain and protect your appliance and keep it in top operating condition.

▲ WARNING

RISK OF ELECTRIC SHOCK HAZARD

To avoid risk of electric shock always disconnect the washer from the power outlet prior to cleaning. Never clean the washer with a pressure washer.

Cleaning the housing and control panel

▲ WARNING

RISK OF EXPLOSION!

To avoid risk of explosion never clean the washer with flammable solvents.

As required, you may clean the washer housing and control panel.

- Use hot soapy water or a mild (non-abrasive) cleaning agent.
- Dry with a soft towel.
- Remove residue immediately.
- Do not use high pressure spray.

Cleaning the drum

Metallic debris left in the drum can produce rust spots on the drum. Never use steel wool to try to remove these.

Use a chlorine-free cleaning agent and follow the manufacturer's instructions.

Descaling the washer

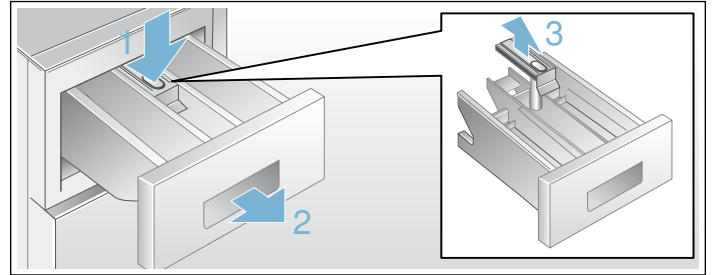
Provided that you use correct amounts of detergent with your wash loads, descaling is not necessary. If descaling the washer drum does become necessary, please follow the descaling product manufacturer's instructions.

Small amounts of descaling agent can be used to remove white spots on the washer drum caused by lime or mineral deposits or small amounts of rust caused by metal objects left in the drum.

NOTICE: Descaling agents contain acids which may attack parts of the washing machine and may discolor the laundry.

Cleaning the detergent dispenser tray

If there is a buildup of residual detergent or additives, or if the softener compartment is not rinsed out well enough, it may be helpful to clean the dispenser.



1. Open the detergent dispenser tray fully. Press down on the drawer catch (1) and pull the tray (2) from the washer housing.
2. Remove the insert (3) by grasping it and pulling it upwards from the detergent dispenser tray.
3. Clean the insert and the detergent dispenser tray by holding it under warm running water. Lightly wipe away any remaining detergent residue.
4. Attach the insert and slide the detergent dispenser tray back into place and close the tray securely.

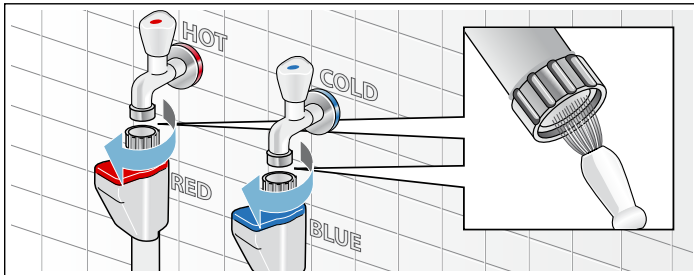
Tip: Do not operate the washer without the detergent dispenser tray in place. Always keep the tray completely closed.

Cleaning the water inlet strainers

If the washer water supply slows or stops completely, the water inlet strainer may be blocked. Cleaning is recommended every 6 months in any event to reduce chances of valve blockage in areas using hard water.

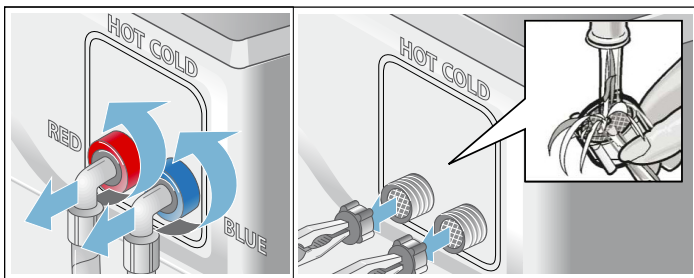
Normal water pressure from your home, that remains in the supply hoses after turning off the taps, will cause a small amount of water to drip out when you remove the water supply hose from the back of the washer. Be sure to close the taps completely before removing the supply hoses to minimize the amount of water.

Clean the strainers at the water tap end of the hose



1. Remove the hose from the tap.
2. Rinse the strainer under running water. Look at the strainer to see if any visible debris is still present. Rinse again if necessary to remove the debris.
3. Reconnect the hose to the tap.

Clean the strainers at the washer end of the hose



1. Remove the hose from the inlet on the back of the washer.
2. Using narrow pliers, grasp and pull the strainer from the inlet port.
3. Rinse the strainer under running water.
4. Reconnect the hose to the back of the washer and turn on the water tap. Check to see if water flows by starting a warm water wash cycle.

NOTICE: Check for leaks to be sure the rubber washers are seated at both ends of the water supply hose and the connections are properly tightened.

Cleaning the drain pump

▲ WARNING

RISK OF SCALDING

Risk of hot water injury to skin!

Allow the water to cool down prior to actuating the emergency door lock release.

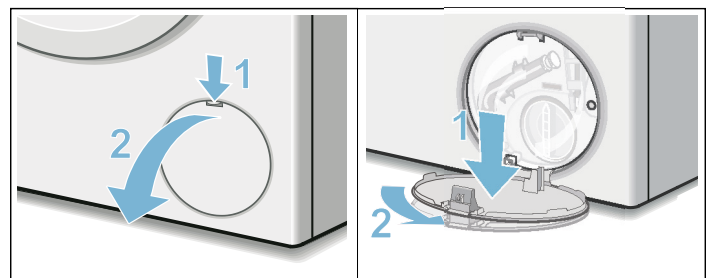
You are responsible for ensuring all safety precautions are followed when draining water from washer and/or manually opening the washer door.

It may be necessary to clean the washer drain pump if the washer fails to drain (sound of water being pumped from the washer cannot be heard when the washer should be draining and other nearby drains, such as a sink, are draining properly).

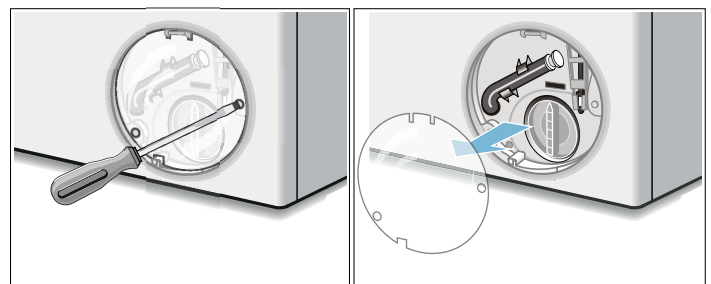
The washer pump can become blocked by loose debris (a good reason to check the drum and remove any visible debris after each load). Fabrics that give off large amounts of fluff may also cause blockage.

To access the washer drain pump, the service cover must first be removed (see steps below). With the service cover removed, proceed as follows:

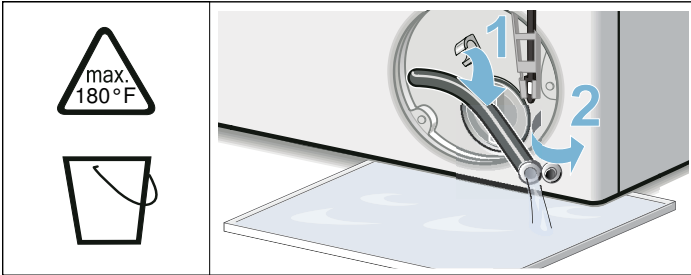
1. If the washer has not been drained, try to drain it now. Turn the program selector to the **Spin/Drain**, select **Spin Speed to No Spin** and press the **Start/Pause** button. Wait a few moments to let the cycle drain the water from the drum. If the pump is totally blocked, the water will be unable to drain and the cycle will end.
2. Shut off the tap so that no more water flows in and has to be drained. Switch the appliance off. Unplug the power plug.
3. Open and remove the service cover.



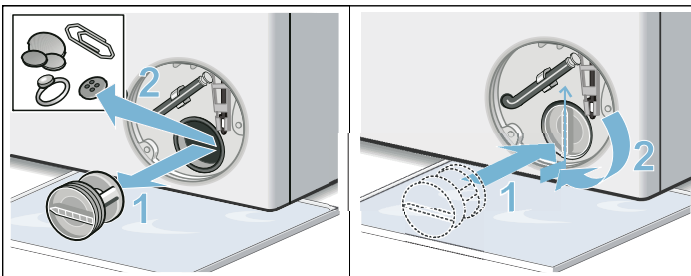
4. Loosen the screws and remove the protective film.



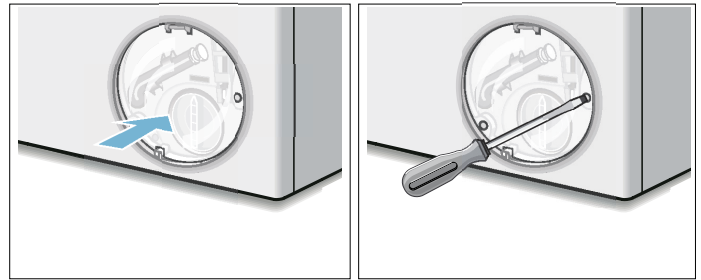
5. Use the pull-out drain hose located in the pump access opening to drain the remaining water into a suitable container (up to 5.3 U.S. gallons/20 liters of water may be drained). Pull the sealing cap from the hose and lay the hose over the side of the container and allow the water to finish draining from the drum. When finished, replace the sealing cap into the end of the hose and restore the hose to its storage location.



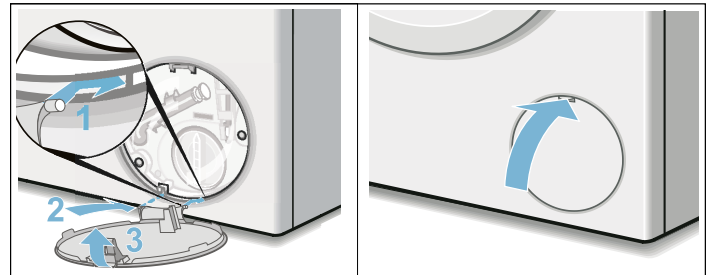
6. Turn the pump cover counterclockwise to remove it. A small amount of residual water may flow out when the cover is removed. Clean the interior of the pump housing, removing any debris or foreign objects. Check to be sure the impeller wheel at the back of the pump housing can now turn freely. Remove any lint, debris or detergent residue from the threads of the pump cover and the pump cover housing. Replace the pump cover by screwing tightly into position. Handle must be vertical.



7. Reinstall the protective film over the pump access using both screws.



8. Snap the service cover in place at the hinges and close it. Wipe up any spilled water.



NOTICE: In order to prevent detergent from flowing unused into the drain during the next wash cycles: pour 0.26 U.S. gallons/1 liter water into the chamber II. Turn the program selector to the **Spin/Drain**, select **Spin Speed** to **No Spin** and press the **Start/Pause** button.

Troubleshooting

Emergency door lock release

In the event of a power interruption the program will continue running when the power supply has been restored.

If the washer door must be opened and the normal door unlock procedures do not work, the emergency door lock release rod can be actuated to open the door.

⚠ WARNING

RISK OF SCALDING

To avoid risk of scalding, allow water to cool down prior to activating the emergency door lock release. The drum may be full of hot water which could cause burn injury.

⚠ WARNING

RISK OF INJURY

You may injure your hands if you reach into the drum while it is turning.

Do not reach into the drum when it is turning. Wait until the drum has stopped turning.

⚠ CAUTION

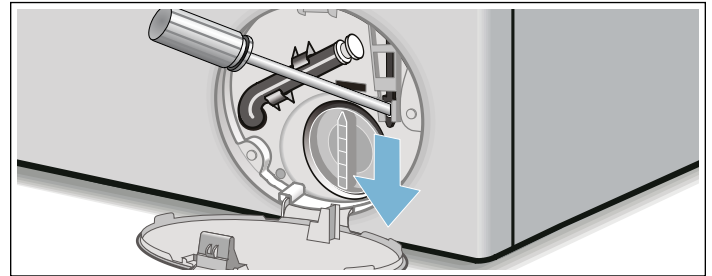
WATER DAMAGE AND BURN INJURY

Any escaping water may cause water damage and burns.

Do not open the washing machine door if water can be seen through the glass.

1. Press the center of Program Selector to switch off the appliance. Any running program will then be cancelled. Disconnect the power plug.
2. Allow the water in the drum to cool off.
3. Allow the washer drum to come to a stand still (no longer spinning).
4. Before opening the washer door, perform the drain procedure included in the pump maintenance section.
→ *Cleaning the drain pump; Page 39*
5. Loosen screws and remove the protective foil.

6. The washing machine door can then be opened.
Pull the emergency release downwards with a tool and release.



7. The door can now be opened.

General Troubleshooting

If you encounter a problem, consider the suggestions and instructions below before you call customer service.

⚠ WARNING

ELECTRIC SHOCK HAZARD

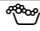

To avoid risk of electric shock, repairs should be carried out by an authorized technician.

If repairs are necessary and you cannot eliminate the fault with the aid of the table below, follow these steps:


1. Press the center of Program Selector to switch off the appliance.
2. Disconnect the appliance from the power outlet.
3. Turn off the water taps.
4. Call Customer Service.
→ *Customer service; Page 5*

NOTICE: The troubleshooting items listed below can help you resolve minor issues with your washer quickly and without the necessity of a service call.




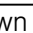
Determining the Problem

Problem	Possible cause(s)	Solution(s)
Washer door cannot be opened.	Child lock is activated.	Deactivate Child lock (press Finish in — and + for approximately 3 seconds).
	A power failure occurred.	If a cycle is interrupted by a power failure, it will resume when the power is restored. If power is not restored follow the cautions and instructions for: → <i>Emergency door lock release; Page 41</i>
	Cycle is running, or water level is too high and/or too hot or the drum is still spinning.	Wait until the cycle ends.
	Electric power cord has become loose or unplugged.	Make sure the electric cord is securely plugged in.
	Appliance switched off before end of cycle.	Switch the appliance on.
Door still cannot be opened, even after turning the washer off and back on again.	Child lock is activated	Deactivate Child lock (press Finish in — and + for approximately 3 seconds).
	Door is locked for safety reasons (high water level, water temperature too high, drum is spinning).	Run a Spin/Drain program to reduce the water temperature and level.
Wash cycle time is increased.	Your washer utilizes sensors to monitor certain characteristics of the wash load. Increases in wash cycle time could be due to: The automatic unbalanced load detection system spins the laundry several times to ensure even distribution.	Solutions are based on the specific reason the wash time has been extended. Always load the washer with a mixture of large and small wash items (easier to distribute in the drum).
	Excess suds.  displays at end of cycle.	Use less detergent.
The display panel and indicator lights switch off, Start/Pause indicator flashes.	Energy-saving mode is activated.	Press any button to activate the display.
The display panel and Start/Pause indicator switch off.	Automatic switch-off function is active.	Press the center of the Program Selector to switch on the appliance.
Cycle does not start - Start/Pause flashes.	Start/Pause button not pressed?	Press the Start/Pause button to start the cycle.
	Washer door is not closed properly.	Check if laundry is caught in the door. Close the door until a click is heard. Press the Start/Pause button to start the cycle.
Cycle does not start - Finish in-time is displayed.	A delayed starting time has been selected and activated.	Wash cycle will begin at proper time to complete at the selected Finish in-time.
Cycle does not start -  symbol flashes.	Child lock is activated.	Deactivate Child lock (press Finish in — and + for approximately 3 seconds).
Detergent residue remains in the detergent dispenser.	Dry detergent may have been damp or lumpy.	Clean and dry the detergent dispenser.
	Excess liquid detergent may have been added.	See <i>Adding the correct amount of HE detergent</i> to determine proper detergent usage. → <i>Adding the correct amount of HE detergent; Page 33</i>
Water does not appear to be filling into the washer or detergent is not dispensed from detergent tray.	Start/Pause not pressed.	Press Start/Pause .
	Water taps not turned on.	Turn on water taps.
	Supply hose kinked or pinched (reduce flow).	Eliminate the cause.
	Water supply hose strainers clogged.	Clean the water inlet strainers.
	Water pressure too low.	Eliminate the cause.

Problem	Possible cause(s)	Solution(s)
Water cannot be seen in the drum.	The water level in your high efficiency front load washer is below the visible part of the drum, this is normal.	No action needed.
Water has not drained completely.	Suds may be excessive (usually due to too much detergent or non-HE detergent being used).	Use less detergent for future loads. Be sure to use only high efficiency HE-detergents.
	Pump is blocked.	Check and clean the drain pump, water drain hose and/or the drain pipe.
	Drain hose or drain pipe is blocked.	Clean drainage pipe and/or drainage hose.
Water is coming out from underneath the washer.	Water supply hose is leaking: is not screwed on tight at both ends, or rubber washer not placed in hose.	Eliminate the cause: tighten the hose (by hand at the washer end), check for rubber washer in place.
	Drain hose is leaking.	Check the drain hose, be sure that it is on the washer securely with the clamp in place; replace the drain hose if leaking continues.
Foam comes out of the detergent dispenser drawer.	Too much detergent was used, or a non-HE detergent was used; pump was not able to pump out the increased suds. 🌀 displays at end of cycle.	Immediate fix: mix 1 tablespoon of fabric softener with 1/2 liter (1 pint) of water and pour this mixture into the detergent compartment, except if there is waterproof type textiles in the load then do not use softener to reduce the foam. To prevent: use less detergent for future wash loads.
Repeated spinning.	The Unbalanced Load Detection system is attempting to balance the load through repeated spin cycles.	To prevent: always load the washer with a mixture of large and small wash items (easier to distribute in the drum).
No spin took place (laundry is still wet).	Load size too small.	Add more laundry.
	Large items may have become entangled in the drum and could not be distributed by the Unbalanced Load Detection system; spin cycle therefore canceled for safety reasons.	To prevent: always load the washer with a mixture of large and small wash items (easier to distribute in the drum).
	Excessive suds: too much detergent was used, or a non-HE detergent was used. 🌀 displays at end of cycle.	Immediate fix: mix 1 tablespoon of fabric softener with 1/2 liter (1 pint) of water and pour this mixture into the detergent compartment, except if there is waterproof type textiles in the load then do not use softener to reduce the foam. To prevent: use less detergent for future wash loads.
	No Spin was selected	Select a spin speed setting (Low, Medium or High)
Detergent residue on the laundry.	Some phosphate free detergents contain water insoluble ingredients that may appear as light spots on the laundry.	Brush off when laundry is dry or execute the program Rinse .
System shakes or shudders when spin speed increases.	The washer drum suspension system shifts during spinning as the speed increases. This may result in a slight shaking of the washer during the spin speed transition.	Mix small and large laundry items together in the load to minimize this effect. Check to be sure the washer is level and all four feet press equally against the floor. → <i>Leveling the washer; Page 17</i> Check that transport bolts have been removed. → <i>Remove the transport bolts; Page 14</i>

Problem	Possible cause(s)	Solution(s)
 does not appear in the display panel.	Wi-Fi is switched off. Wi-Fi is switched on but a connection to the home network cannot be established.	To connect to your home network, switch on Wi-Fi. Check whether your home network is available or try to connect to your home network again. → <i>Home Connect; Page 27</i>
Home Connect is not working.		<ul style="list-style-type: none"> You can find solutions to problems with Home Connect at www.home-connect.com. The use of the Home Connect functionality depends on the availability of the Home Connect Services in your country. Check here, www.home-connect.com, to see if the Home Connect services are available in your area and further information.

Information on the display area

Problem	Possible cause(s)	Solution(s)
 flashes	Door not closed properly or attempting to lock or unlock.	Check that no laundry is caught between the door glass and gasket and close door securely. Wait until door is locked or unlocked.
 flashes	Cold water tap not turned on.	Turn on the cold water tap.
	Supply hose for cold water kinked or pinched closed.	Eliminate the cause, replace the hose if damage.
	Strainer in water supply hose clogged.	Clean the water inlet strainer. → <i>Cleaning the water inlet strainers; Page 39</i>
 flashes	Cold water pressure too low.	Eliminate the cause.
	Too much detergent used or non-HE detergent used.	Use less detergent for future loads. Only use HE detergents.
The Drum Clean program indicator flashes	Indicates Extra Hot wash temperature has not been used in recent wash cycles.	Run a Drum Clean or other program with Extra Hot temperature option selected and without laundry.
H:93 ,  is shown	Hot water tap not turned on.	Confirm hot water hose is correctly connected and turn on the hot water tap.
	Supply hose for hot water kinked or pinched closed.	Eliminate the cause, replace the hose if damaged.
	Hot water pressure too low.	Eliminate the cause.
	Strainer in water supply hose clogged.	Clean strainers in supply hoses.
E:00 <-> - 18	Pump is blocked (obstructed).	Clean the washer drain hose and/or the drain pipe. May need to perform pump maintenance to clear blockage. → <i>Cleaning the drain pump; Page 39</i>
E:00 <-> - 23	Water in the base, appliance leaking.	Turn off the water tap. Call the customer service!
Others		Turn off machine, wait 5 seconds and turn on again. If the the problem persists, call customer service.

If troubleshooting did not solve your issue contact customer service → *Customer service; Page 5*

STATEMENT OF LIMITED PRODUCT WARRANTY

Bosch Clothes Washer

What this Warranty Covers & Who it Applies to

The limited warranty provided by BSH Home Appliances Corporation ("Bosch") in this Statement of Limited Product Warranty applies only to the Bosch appliance sold to you, the first using purchaser, provided that the Product was purchased:

- For your normal, household (non-commercial) use, and has in fact at all times only been used for normal household purposes.
- New at retail (not a display, "as is", or previously returned model), and not for resale, or commercial use.
- Within the United States or Canada, and has at all times remained within the country of original purchase.

The warranties stated herein apply only to the first purchaser of the Product and are not transferable.

Please make sure to return your registration card; while not necessary to effectuate warranty coverage, it is the best way for Bosch to notify you in the unlikely event of a safety notice or product recall.

Limitation for Third Party Accessories and Water

Supply Hoses: Third party accessories, including water supply hoses other than those shipped with your Bosch washer, and any consequential damages resulting therefrom, are not covered by this warranty. This limitation expressly includes the implied warranties of merchantability and fitness for a particular purpose, which are also expressly excluded with respect to third party accessories, including water supply hoses other than those shipped with your Bosch washer. Use of third party accessories, including water supply hoses other than those shipped with your Bosch washer, does not void this warranty on any other part, and all other provisions of this warranty remain in effect.

How Long the Warranty Lasts

Bosch warrants that the Product is free from defects in materials and workmanship for a period of three hundred sixty-five (365) days from the date of purchase. The foregoing timeline begins to run upon the date of purchase, and shall not be stalled, tolled, extended, or suspended, for any reason whatsoever.

This Product is also warranted to be free from cosmetic defects in material and workmanship (such as scratches of stainless steel, paint/porcelain blemishes, chip, dents, or other damage to the finish) of the Product, for a period of thirty (30) days from the date of purchase or closing date for new construction. This cosmetic warranty excludes slight color variations due to inherent differences in painted and porcelain parts, as well as differences caused by kitchen lighting, product location, or other similar factors. This cosmetic warranty specifically excludes any display, floor, "As Is", or "B" stock appliances.

SCOPE OF EXTENDED LIMITED WARRANTY

Bosch will repair or replace, free of charge, any printed circuit boards, drive motor or component part of the drive motor that proves defective under conditions of normal home use during the first seven hundred thirty (730) days from the date of purchase, labor charges excluded.

Repair/Replace as Your Exclusive Remedy

During this warranty period, Bosch or one of its authorized service providers will repair your Product without charge to you (subject to certain limitations stated herein) if your Product proves to have been manufactured with a defect in materials or workmanship. If reasonable attempts to repair the Product have been made without success, then Bosch will replace your Product (upgraded models may be available to you, in Bosch's sole discretion, for an additional charge). All removed parts and components shall become the property of Bosch at its sole option. All replaced and/or repaired parts shall assume the identity of the original part for purposes of this warranty and this warranty shall not be extended with respect to such parts. Bosch's sole liability and responsibility hereunder is to repair manufacturer-defective Product only, using a Bosch-authorized service provider during normal business hours. For safety and property damage concerns, Bosch highly recommends that you do not attempt to repair the Product yourself, or use an un-authorized servicer; Bosch will have no responsibility or liability for repairs or work performed by a non-authorized servicer. If you choose to have someone other than an authorized service provider work on your Product, THIS WARRANTY WILL AUTOMATICALLY BECOME NULL AND VOID. Authorized service providers are those persons or companies that have been specially trained on Bosch products, and who possess, in Bosch's opinion, a superior reputation for customer service and technical ability (note that they are independent entities and are not agents, partners, affiliates or representatives of Bosch). Notwithstanding the foregoing, Bosch will not incur any liability, or have responsibility, for the Product if it is located in a remote area (more than 100 miles from an authorized service provider) or is reasonably inaccessible, hazardous, threatening, or treacherous locale, surroundings, or environment; in any such event, if you request, Bosch would still pay for labor and parts and ship the parts to the nearest authorized service provider, but you would still be fully liable and responsible for any travel time or other special charges by the service company, assuming they agree to make the service call.

Out of Warranty Product

Bosch is under no obligation, at law or otherwise, to provide you with any concessions, including repairs, pro-rates, or Product replacement, once this warranty has expired.

Warranty Exclusions

The warranty coverage described herein excludes all defects or damage that are not the direct fault of Bosch, including without limitation, one or more of the following:

- Use of the Product in anything other than its normal, customary and intended manner (including without limitation, any form of commercial use, use or storage of an indoor product outdoors, use of the Product in conjunction with air or water-going vessels).
- Any party's willful misconduct, negligence, misuse, abuse, accidents, neglect, improper operation, failure to maintain, improper or negligent installation, tampering, failure to follow operating instructions, mishandling, unauthorized service (including self-performed "fixing" or exploration of the appliance's internal workings).
- Adjustment, alteration or modification of any kind.
- A failure to comply with any applicable state, local, city, or county electrical, plumbing and/or building codes, regulations, or laws, including failure to install the product in strict conformity with local fire and building codes and regulations.
- Ordinary wear and tear, spills of food, liquid, grease accumulations, or other substances that accumulate on, in, or around the Product.
- Any external, elemental and/or environmental forces and factors, including without limitation, rain, wind, sand, floods, fires, mud slides, freezing temperatures, excessive moisture or extended exposure to humidity, lightning, power surges, structural failures surrounding the appliance, and acts of God.

In no event shall Bosch have any liability or responsibility whatsoever for damage to surrounding property, including cabinetry, floors, ceilings, and other structures or objects around the Product. Also excluded from this warranty are Products on which the serial numbers have been altered, defaced, or removed; service visits to teach you how to use the Product, or visits where there is nothing wrong with the Product; correction of installation problems (you are solely responsible for any structure and setting for the Product, including all electrical, plumbing or other connecting facilities, for proper foundation/flooring, and for any alterations including without limitation cabinetry, walls, floors, shelving, etc.); and resetting of breakers or fuses.

TO THE EXTENT ALLOWED BY LAW, THIS WARRANTY SETS OUT YOUR EXCLUSIVE REMEDIES WITH RESPECT TO PRODUCT, WHETHER THE CLAIM ARISES IN CONTRACT OR TORT (INCLUDING STRICT LIABILITY, OR NEGLIGENCE) OR OTHERWISE. THIS WARRANTY IS IN LIEU OF ALL OTHER WARRANTIES, WHETHER EXPRESS OR IMPLIED. ANY WARRANTY IMPLIED BY LAW, WHETHER FOR MERCHANTABILITY OR FITNESS FOR A PARTICULAR PURPOSE, OR OTHERWISE, SHALL BE EFFECTIVE ONLY FOR THE PERIOD THAT THIS EXPRESS LIMITED WARRANTY IS EFFECTIVE. IN NO EVENT WILL THE MANUFACTURER BE LIABLE FOR CONSEQUENTIAL, SPECIAL, INCIDENTAL, INDIRECT, "BUSINESS LOSS", AND/OR PUNITIVE DAMAGES, LOSSES, OR EXPENSES, INCLUDING WITHOUT LIMITATION TIME AWAY FROM WORK, HOTELS AND/OR RESTAURANT MEALS, REMODELLING EXPENSES IN EXCESS OF DIRECT DAMAGES WHICH ARE DEFINITELY CAUSED EXCLUSIVELY BY BOSCH, OR OTHERWISE. SOME STATES DO NOT ALLOW THE EXCLUSION OR LIMITATION ON HOW LONG AN IMPLIED WARRANTY LASTS, SO THE ABOVE LIMITATIONS MAY NOT APPLY TO YOU. THIS WARRANTY GIVES YOU SPECIFIC LEGAL RIGHTS, AND YOU MAY ALSO HAVE OTHER RIGHTS WHICH VARY FROM STATE TO STATE.

No attempt to alter, modify or amend this warranty shall be effective unless authorized in writing by an officer of BSH.

How to Obtain Warranty Service:

To obtain warranty service for your Product, you should contact Bosch Customer Service Department.

BSH Home Appliances Corporation - 1901 Main Street, Suite 600 / Irvine, CA 92614 / 1-800-944-2904



9001267174
9706



BOSCH

1901 Main Street, Suite 600 • Irvine, CA 92614 • 1-800-944-2904
www.bosch-home.com • © 2012 BSH Home Appliances Corporation