

## SINGLE HANDLE KITCHEN FAUCET WITH PULL-DOWN SPRAY

Notes: The picture in this installation instructions is for reference only, pls refer to actual product in installation process.

### MODELS

547851-Satined Nickel

547869-Polished Chrome

548305-Stained Nickel

548297-Polished Nickel

548552-Stained Nickel



### PRODUCT SPECIFICATIONS

SPECIFICATIONS
Max. flow rate: 1.8 GPM (6,814 LPM) at 60 PSI
ASME A112.18.1/CSA B125
ANSI/NSF 61-9
1 or 3-hole installation - optional deck plate not included
Chrome and Satined nickel finish

\*548552 Max Flow Rate 2.2gpm

SPECIFICATIONS
Ceramic cartridges
Manufactured to include no more than 0.25% weighted average lead content on wetted surfaces

### SAFETY INFORMATION

Please read and understand this entire manual before attempting to assemble, operate or install the product.

#### WARNING

- Protect your eyes with safety glasses when cutting or soldering water supply lines.

#### CAUTION

- If you solder the joints during installation of the faucet, the seats, cartridges, and washers must be removed before using a flame or the warranty will be voided on these parts.
- Cover the sink drain to avoid losing parts.

### PREPARATION

Before beginning assembly of product, make sure all parts are present. Compare parts with package contents list and hardware contents. If any part is missing or damaged, do not attempt to assemble the product. Contact customer service for replacement parts.

#### Estimated Assembly Time: 30 minutes

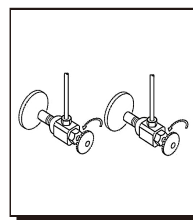
Tools Required for Assembly (not included): Adjustable Wrench, Groove Joint Pliers, Pipe Wrench, Phillips Head Screwdriver, and Supply Lines.

www.todaysdesignhouse.com

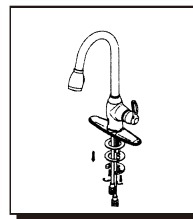
Installations may vary depending on how the previous faucet was installed. Supplies necessary for the installation of the faucet are not all included; however, they are available wherever plumbing supplies are sold.

Prior to beginning installation, turn off the hot and cold water lines, then turn on the old faucet to release built-up pressure. When installing the new faucet, hand tighten the connector nuts. **DO NOT OVERTIGHTEN.** Connections that are too tight will reduce the integrity of the system.

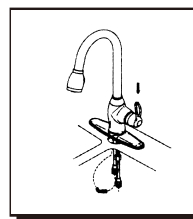
4-8-16



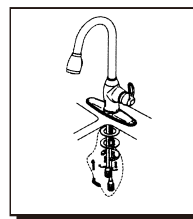
- Shut off water supply. Remove old faucet and clean sink surface preparation for new faucet.



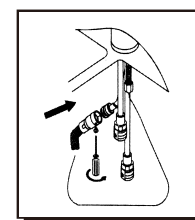
- Remove rubber seal, metal washer and lock nut from spout shank.



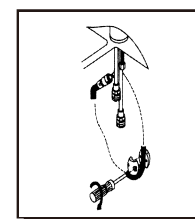
- Install faucet body through top of sink.



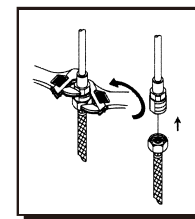
- Attach rubber washer, metal washer, lock nut on mounting body. Tighten the two screw on lock nut.



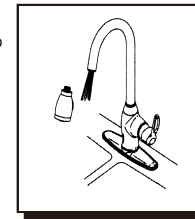
- Loosen screw on adaptor at the end of flex hose, push adaptor with hose coupling until you hear a "click". Tighten with screws.



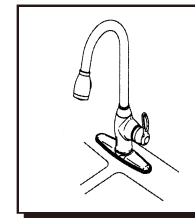
- Attach metal weight to hose to prevent hose from twisting. Return hose to proper position.



- Tighten end of shank with wrench and slip hose onto inlet port.



- After installation is completed, turn the water on to remove any left-over debris.



- After debris has been removed, assemble the spray head.

**CARE AND MAINTENANCE**

Clean periodically with a soft cloth. Avoid abrasive cleaners, steel wool, and harsh chemicals as these will dull the finish and void your warranty

**TROUBLESHOOTING**

PROBLEM	POSSIBLE CAUSE	CORRECTIVE ACTION
Leaks underneath handle	Bonnet has come loose or O-ring on cartridge is dirty or twisted.	<ol style="list-style-type: none"> <li>1. Shut off the water supply to the faucet that leaks.</li> <li>2. Remove the handle on the problem side. Loosen the bonnet by turning it counterclockwise. Lift out the cartridge assembly.</li> <li>3. Inspect the rubber valve seat in the faucet body. If there is debris or brass scrap on the surface of the seat, remove it. If the rubber seat is stuck tightly in the water inlet hole, push it gently with a fingertip so that it moves up and down smoothly. The spring (smaller end up) must be replaced underneath the valve seat. If the rubber valve seat is worn out or broken, replace the cartridge by calling customer service.</li> <li>4. Replace the cartridge in the faucet body. Make sure that the ridges on the two sides of the cartridge bonnet fit into the grooves on the two sides of the faucet body. Tightly screw the bonnet onto the faucet body.</li> <li>5. Re-install the handle.</li> </ol>
Water does not completely shut off	Rubber valve seat is dirty, stuck or broken.	<ol style="list-style-type: none"> <li>1. Shut off the water supply to the faucet that leaks.</li> <li>2. Remove the handle on the problem side. Loosen the bonnet by turning it counterclockwise. Lift out the cartridge assembly.</li> <li>3. Inspect the rubber valve seat in the faucet body. If there is debris or brass scrap on the surface of the seat, remove it. If the rubber seat is stuck tightly in the water inlet hole, push it gently with a fingertip so that it moves up and down smoothly. The spring (smaller end up) must be replaced underneath the valve seat. If the rubber valve seat is worn out or broken, replace the cartridge by calling customer service.</li> <li>4. Replace the cartridge in the faucet body. Make sure that the ridges on the two sides of the cartridge bonnet fit into the grooves on the two sides of the faucet body. Tightly screw the bonnet onto the faucet body.</li> <li>5. Re-install the handle.</li> </ol>

**LIMITED LIFETIME WARRANTY**

The distributor warrants to the original consumer purchaser this product to be free from defects in material and workmanship under normal use in residential applications. At its option, the Company will provide repair parts or replace defective product when the product is used in accordance with the manufacturer's specifications.

The distributor provides a limited warranty on the finish of this product to the original purchaser. At its option, the distributor will provide repair parts or replace defective product when the product is used in accordance with the manufacturer's specifications. Use of mild abrasive, abrasive or chemical cleaners may damage the finish of the faucet. We recommend cleaning your faucet with a soft cloth, moistened with water. Damage resulting from the use of abrasive or chemical cleaners SHALL VOID THIS WARRANTY.

This warranty is not applicable to any products or parts of products where damage is caused by use of non-genuine parts; is due to installation error, product misuse, negligence or faulty maintenance; or where the product is not installed according to local building codes.

This warranty excludes labor charges or damage incurred during installation, repair or replacement, and any indirect, incidental or consequential damages, losses, injury or costs of any nature. This warranty is in lieu of and excludes all other warranties, conditions and guarantees, whether expressed or implied, including without restriction those of merchantability or fitness of use. Liability under this warranty will not exceed the purchase price for the product claimed to be defective by the original consumer purchaser. Some states or provinces do not allow the exclusion or limitation of consequential damages so the above limitations or exclusions may not apply. This warranty gives you specific legal rights and you may also have other rights which vary from state to state, or province to province.

Inquiries regarding warranty claims can be directed to 1-800-558-8700, 8 a.m. - 5 p.m., CST, Monday - Friday.