

Model # PCPBHD

Use and Care Guide

Drill Powered Duct Brush Kit

EVERBILT

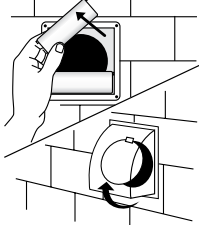
TOOLS REQUIRED

HARDWARE REQUIRED (NOT INCLUDED)

Installation

- 1 UNPLUG DRYER AND REMOVE DRYER DUCT**

- 2 REMOVE OR OPEN EXTERIOR VENT HOOD**

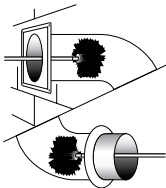


- 3 CONNECT THE BRUSH HEAD TO ANY OF THE ROD(S)**



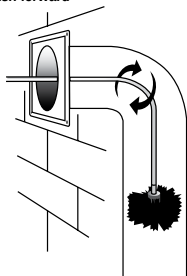
- 4 INSERT BRUSH/ROD ASSEMBLY INTO WALL THROUGH DUCT OPENING WHERE DRYER WAS CONNECTED OR THROUGH OUTSIDE VENT HOOD OPENING.**

- NOTE: A drill can be attached to the brush/rod assembly for more effective cleaning



- 5 WHILE TURNING IN A CLOCKWISE DIRECTION, GENTLY PUSH AND PULL BRUSH/ROD ASSEMBLY 12" AT A TIME. REPEAT UNTIL ENTIRE LENGTH OF DUCT IS CLEAN**

- CAUTION: Never force the brush/rod assembly through the duct. If it should become jammed, pull assembly away from constricted area a few inches (still rotating in a clockwise direction) then slowly push forward



- 6 CHECK OUTSIDE VENT HOOD AND INSIDE WALL DUCT OPENING TO ENSURE ENTIRE DUCT HAS BEEN CLEANED. REMOVE ANY LINT PUSHED OUT FROM THE CLEANING PROCESS AND CLOSE OR REPLACE HOOD**

- 7 RECONNECT THE DRYER DUCT TO THE DRYER AND PUSH DRYER BACK INTO PLACE**

- 8 TURN ON DRYER AND ENSURE THE AIR IS FLOWING PROPERLY THROUGHOUT THE DUCT AND EXHAUSTING AIR THROUGH THE OUTSIDE VENT CAP**

Warranty

WHAT IS COVERED

All merchandise is warranted to be free from defects in workmanship and material for one year from the date of purchase. This includes normal wear and performance failure on items. The manufacturer will replace or repair at their option.

WHAT IS NOT COVERED

This warranty only covers normal wear and performance failure. It does not cover any malfunction, performance failure, or defect arising from the misuse, abuse, neglect, or modification of the product. Any damage or malfunction inflicted upon the product by the user or other external sources, or any failure to comply with the warnings and instructions, is not covered.

For further assistance call 1-800-305-1726 or visit www.HomeDepot.com.