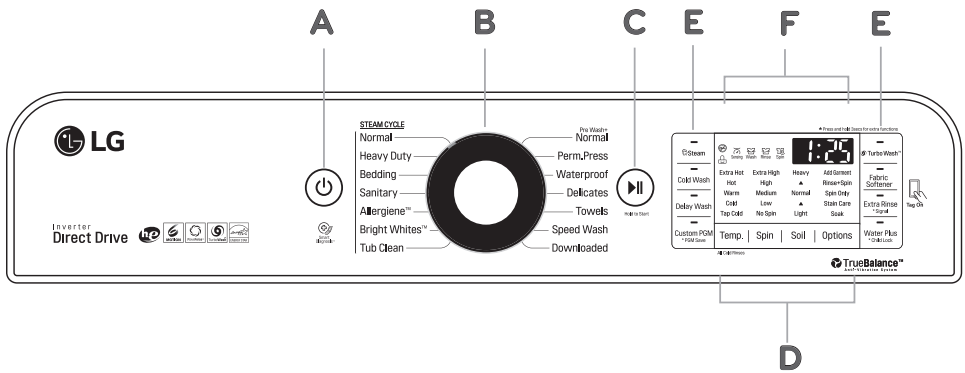


HOW TO USE

CONTROL PANEL FEATURES



A POWER (ON/OFF) BUTTON

Press to turn the washer ON. Press again to turn the washer OFF. Pressing the POWER button during a cycle will cancel that cycle and any load settings will be lost. The lid will unlock after a brief pause.

NOTE:

- If there is any water remaining in the tub after the washer shuts off, it will drain following 4-minutes delay. The washer can be restarted any time before the drain begins. However, once the water begins to drain, all functions will be suspended until the water has been completely drained and the washer shuts off.
- When you press Power button, Normal Course will be lighted on. But, to select Normal Cycle, you need to turn the knob to turn on the light of Normal Course and activate the set options.

B CYCLE SELECTOR KNOB

Turn this knob to select the desired cycle. Once the desired cycle has been selected, the standard presets will appear in the display. These settings can be adjusted using the cycle setting buttons any time before starting the cycle.

NOTE: To protect your clothing, not all settings are available on all cycle selections.

C START/PAUSE BUTTON

Press this button more than 0.4 seconds hold to start the selected cycle. If the washer is running, use this button to pause the cycle without losing the current settings.

NOTE: If you do not press the START/PAUSE button within 60 minutes of selecting a cycle, the washer automatically turns OFF and all cycle settings are lost. And any water remaining in the tub will be drained.

D CYCLE MODIFIER BUTTONS

Use these buttons to adjust the settings for the selected cycle. The setting lights above the buttons illuminate to show the current selection.

E SPECIAL CYCLE AND OPTION BUTTONS

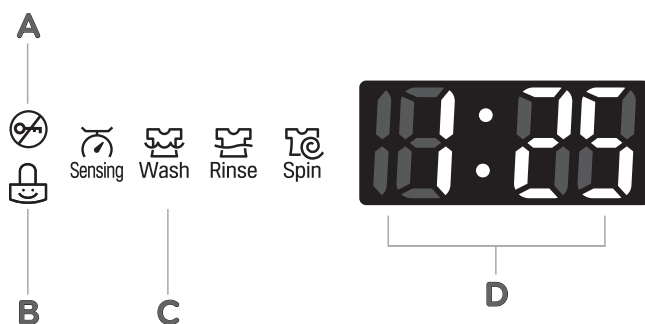
These buttons allow you to select special cycles or options.

F TIME AND STATUS DISPLAY

The display shows the cycle status and estimated time remaining.

TIME AND STATUS DISPLAY

The time and status display shows the estimated time remaining and cycle progress.



A LID LOCK INDICATOR

The Lid Lock indicator will illuminate once a cycle has started. The indicator light will stay on until the cycle is paused, stopped or has finished.

B CHILD LOCK

When the Child Lock function is activated, the LED lights up. When the Child Lock function is set, except for the POWER button, the other functions are disabled. Once the Child Lock function is disabled, the LED will turn off.

C CYCLE STATUS INDICATOR

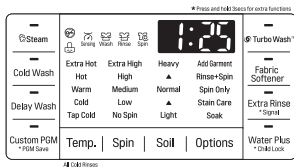
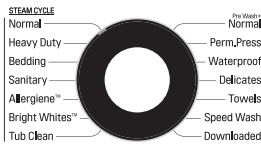
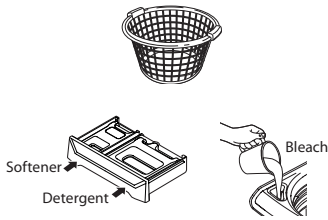
These LEDs will illuminate when a cycle is selected to indicate which stages will run. When a cycle is running, the LED for the active stage will blink, and the LEDs for the remaining stages will remain steady. Once a stage is complete, the LED will turn off. If a cycle is paused, the active stage LED will stop blinking.

D ESTIMATED TIME REMAINING

When a cycle is selected, the default time for that cycle is displayed. This time will change as modifiers or options are selected. Once the START/PAUSE button is pressed, the washer will measure the size of the load. The estimated time may change once the load size has been measured. If Delay Wash is set, the remaining delay time counts down until the cycle begins.

NOTE: The time shown is only an estimate. This time is based on normal operating conditions. Several external factors (load size, room temperature, incoming Water temperature, water pressure, etc.) can affect the actual time.

OPERATING THE WASHER



Hold to Start

Add Garment



1 SORT LAUNDRY AND LOAD THE WASHER

Sort laundry by fabric type, soil level, color and load size, as needed. Open the lid and load items into the washer.

2 CLEANING PRODUCTS

Add High-Efficiency (HE) detergent to the detergent dispenser. If bleach or fabric softener is to be used, add these to the appropriate dispensers.

3 TURN ON THE WASHER

Press the POWER button to turn ON the washer. The lights around the cycle selector knob will illuminate and a chime will sound.

4 SELECT A CYCLE

Turn the cycle selector knob in either direction to select the desired cycle. The preset Wash Temp., Spin, Soil, Options and option settings for that cycle will be shown. When you press Power button, Normal Course will be lighted on. But, to select Normal Cycle, you need to turn the knob to turn on the light of Normal Course and activate the set options.

5 ADJUST SETTINGS

Default settings for the selected cycle can now be changed, if desired, using the cycle modifier and option buttons.

NOTE: Not all modifiers and options are available on all cycles. A different chime will sound and the LED will not come on if the selection is not allowed.

6 BEGIN CYCLE

Press and hold the START/PAUSE button to begin the cycle. The lid will lock, and the washer will agitate briefly without water to measure the weight of the load. If the START/PAUSE button is not pressed within 60 minutes, the washer will shut off and all settings will be lost.

7 ADD GARMENT LIGHT

The Add Garment light will illuminate near the beginning of the wash cycle to indicate when it is safe to add items to the load. Press the START/PAUSE button to pause the cycle and add garments to the load. Press the START/PAUSE button to resume the cycle.

NOTE: It is not recommended to add items unless the Add Garment light is illuminated, as this could result in poor performance and/or clothing damage.

8 END OF CYCLE

When the cycle is finished, a melody will sound. Immediately remove your clothing from the washer to reduce wrinkling.

⚠ WARNING

- To reduce the risk of fire, electric shock, or injury to persons, **read the IMPORTANT SAFETY INSTRUCTIONS** before operating this appliance.

CYCLE GUIDE

The cycle guide below shows the default settings, available options and recommended fabric types for each cycle. Allowable modifier adjustments are shown below the default setting for each cycle.

- Default Setting
- Available options
- ★ Cannot be used if Steam is selected
- Turbo Wash™ will be deselected

Cycle	Fabric or Load Type	Wash Mode	Temp.	Spin	Soil	Soak	Stain Care	Extra Rinse	Water Plus	Delay Wash	PGM Save
Normal	Cotton, linen, shirts, jeans, mixed loads	Steam	Extra Hot ^b	Extra High	Heavy						
		Turbo Wash™	Hot	High	Normal	★	■ ^c	●	●	●	●
		Cold Wash ^b	Warm	Medium	Normal						
Heavy Duty	Heavily soiled cotton fabrics	Cold Wash	Cold	Low ^a	Light						
		Fabric Softener	Tap Cold	No Spin	Light						
		Steam	Hot	Extra High	Heavy						
Bedding	Large items such as blankets, comforters, and sheets.	Turbo Wash™	Warm	Medium	Normal	★	■	●	●	●	●
		Cold Wash	Cold	Low	Light						
		Fabric Softener	Tap Cold	No Spin	Light						
Use the Bedding cycle for items such as pillows, comforters, pet bedding and other articles which have difficulty absorbing water. DO NOT WASH EXCESSIVELY LARGE ITEMS. If large/bulky items do not fit easily into the tub, there may not be enough room for them to move during washing. Keep like items together; do not mix large bulky items with smaller clothing items. Failure to follow these instructions may result in damage to the clothing or to the washer.											
Sanitary	White fabrics	No Option	Extra Hot	Extra High	Heavy						
		Steam	Hot	High	Normal	★		●	●	●	●
		Turbo Wash™	Warm	Medium	Normal						
Allergiene™	Heavily soiled underwear, work clothes, diapers, etc. (less than 11 lbs.)	Fabric Softener	Tap Cold	No Spin	Light						
		Steam	Hot	Extra High	Heavy						
		Cold Wash	Cold	Low	Normal			●	●	●	●
Bright Whites™	Cotton, underwear, pillow covers, bed sheets, baby wear. (less than 12 lbs.)	No Option	Extra Hot	Extra High	Heavy						
		Steam	Hot	High	Normal	★					
		Turbo Wash™	Warm	Medium	Normal			●	●	●	●
Tub Clean	Refer to page 27.	Fabric Softener	Tap Cold	No Spin	Light						
		Steam	Hot	High	Light					●	
		No Option	Extra Hot	Extra High	Heavy						

^a The Low spin speed is available only with the Heavy soil level.

^b Cold Wash and Extra Hot are not available with the Heavy soil level.

^c Stain Care cannot be used if Cold Wash is selected.

NOTE: The following options can only be used independently of each other: Steam, Turbo Wash™, Fabric Softener, Cold Wash.

Soak and Stain Care cannot be selected together.

CYCLE GUIDE

The cycle guide below shows the default settings, available options and recommended fabric types for each cycle. Allowable modifier adjustments are shown below the default setting for each cycle.

- Default Setting
- Available options
- Cannot be used if Steam is selected
- Turbo Wash™ will be deselected

Cycle	Fabric or Load Type	Wash Mode	Temp.	Spin	Soil	Soak	Stain Care	Extra Rinse	Water Plus	Delay Wash	PGM Save
Pre Wash+ Normal	Cotton, linen, shirts, jeans, mixed loads		Hot	Extra High							
			Warm	High	Normal			●	●	●	●
Perm. Press	Dress shirts/pants, wrinkle-free clothing, poly/cotton blend clothing, table-cloths	Fabric Softener	Cold	Low	Light						
		No Option	Tap Cold	No Spin	Heavy						
		Turbo Wash™	Warm	High	Normal	●		●	●	●	●
Waterproof	Waterproof items - i.e. Water resistant clothing, mattress covers, outdoor clothes, plastic mats etc. (less than 14 lbs.)	Cold Wash	Cold	Low	Light						
		Fabric Softener	Tap Cold	No Spin	Light						
		No Option			Heavy						
Delicates	Dress shirts/blouses, nylons, sheer or lacy garments (less than 8 lbs.)		Warm		Heavy						
			Cold	Low	Normal	●		●	●	●	●
		Fabric Softener	Tap Cold	No Spin	Light						
Towels	Big towels, small towels	No Option		Extra High	Heavy						
		Turbo Wash™	Hot	High	Normal	●	■ ^c	●	●	●	●
		Cold Wash	Warm	Medium	Light						
Speed Wash	Lightly soiled and small loads	Fabric Softener	Cold	Low	Light						
			Tap Cold	No Spin	Light						
		Turbo Wash™	Warm	High	Normal	●		●	●	●	●
Downloaded	The downloaded cycle (See page 22.)		Cold	Low	Light						
			Tap Cold	No Spin	Light						

^a The Low spin speed is available only with the Heavy soil level.

^b Cold Wash and Extra Hot are not available with the Heavy soil level.

^c Stain Care cannot be used if Cold Wash is selected.

NOTE: The following options can only be used independently of each other: Steam, Turbo Wash™, Fabric Softener, Cold Wash.

Soak and Stain Care cannot be selected together.

NOTE:

To protect your garments, not every wash/rinse temperature, spin speed, soil level, or option is available with every cycle. A chime will sound and the LED will not light if the selection is not allowed.

*When a cycle is selected, the default time for that cycle is displayed. This time will change as modifiers or options are selected. Once the START/PAUSE button is pressed, the washer will measure the load.

The estimated time may change once the load has been measured. The washer automatically adjusts the wash time for the amount of laundry, water pressure, water and other operating conditions.

WASH CYCLES

Wash cycles are designed for the best wash performance for each type of load. Select the cycle that best matches the load contents for maximum wash performance and fabric care. Turn the knob to the desired cycle. When you select a wash cycle, the light for the corresponding wash cycle will turn on. See page 19, **OPERATING THE WASHER**, for more details on operating methods.

Normal

Use this cycle to wash all normal items, except delicate fabrics such as wool or silk.

NOTE: Pressing the START/PAUSE button without selecting a cycle will cause the NORMAL cycle to begin immediately using the default settings.

Heavy Duty

This cycle is for washing heavily soiled laundry using more powerful wash motions.

NOTE: When washing large loads, in order to deliver the best performance, there will be brief periods of 2 minutes or more without agitation. These soak periods are part of the cycle's design, and are normal.

Bedding

This cycle is for washing blankets or bulky items.

NOTE: Do not use this cycle to wash a mixed load of bedding and non-bedding items.

Sanitary

This wash cycle reduces 99.9% bacteria on laundry through high temperature.



Protocol P172
Sanitization Performance of Residential and
Commercial, Family Sized Clothes Washers

Allergiene™

This cycle is a powerful, high temperature cycle designed specifically to reduce certain allergens.

NOTE:

- Selecting the ALLERGIENE™ cycle automatically incorporates steam into the wash cycle.
- The ALLERGIENE™ cycle can significantly reduce allergens in bedding and clothing.
- The ALLERGIENE™ cycle helps reduce dust mite populations and helps reduce allergens. Due to the higher energy and temperatures used, the ALLERGIENE™ cycle is not recommended for wool, silk, leather, or any other delicate or temperature-sensitive items

Bright Whites™

This cycle is for washing white items only.

Tub Clean

Use this cycle to clean the tub of your washing machine.

Pre Wash+

Normal

Washing laundry with ^{Pre Wash+}Normal cycle that pretreats immediate stain without hand-wash. i.e. Necessary for clothes which could be smelled badly without prompt laundry.

Perm.Press

This cycle is for washing items such as wrinkle-free clothes or tablecloths to minimize wrinkles.

Waterproof

This cycle is used for washing waterproof material.

NOTE:

- Do not use any other wash cycle to wash waterproof fabrics. (i.e. Water resistant clothing, mattress covers, outdoor clothes, plastic mats etc.)
- Do not use this cycle to wash a mixed load of waterproof and non-waterproof items.
- Use only the waterproof cycle, after checking the washing instruction label on the fabric.
- Do not wash other fabrics using the waterproof cycle.

⚠ WARNING

- If waterproof material laundry is washed in a course other than Waterproof, it may result in injury or damage to the washer, clothes, walls, floor, and surrounding objects due to abnormal vibration.

Delicates

This cycle is for washing lingerie or sheer and lacy clothes which can easily be damaged.

Towels

Use this cycle for washing towels, shirts, jeans and mixed loads.

Speed Wash

Use the Speed Wash cycle to quickly wash lightly soiled clothing and small loads. For high wash and rinse efficiency, washing small loads of 2-3 lightly soiled garments is recommended.

NOTE: Use very little detergent in this cycle. If you want additional rinsing, you can add extra rinses by using the Extra Rinse button.

Downloaded

If you downloaded a cycle using the Tag On feature, it will be placed in the Download cycle position. Choose the Downloaded cycle to run the Downloaded cycle.

NOTE: The default cycle for this position is Small Load, used for normally soiled loads with just a few items. The Small Load cycle is also available to download.

CYCLE MODIFIER BUTTONS

Each cycle has default settings that are selected automatically. You may also customize these settings using the cycle modifier buttons. Press the button for the desired modifier until the indicator light for the desired setting is lit. The washer automatically adjusts the water level for the type and size of wash load for best results and maximum efficiency. Due to the high-efficiency nature of this

product, water levels may be much lower than expected. This is normal and cleaning/rinsing performance will not be compromised.

NOTE: To protect your garments, not every wash/temperature, spin speed, soil level, or option is available with every cycle. A chime will sound and the LED will not light if a selection is not allowed.

Extra Hot	Extra High	Heavy	Add Garment
Hot	High	▲	Rinse+Spin
Warm	Medium	Normal	Spin Only
Cold	Low	▲	Stain Care
Tap Cold	No Spin	Light	Soak

Temp.	Spin	Soil	Options
-------	------	------	---------

Temp.

Temp. selects the wash and temperature combination for the selected cycle. Press the Temp. button until the indicator light for the desired setting is lit. All rinses use tap cold water.

- Select the water temperature suitable for the type of load you are washing. Follow the garment fabric care labels for best results.

Spin

Higher spin speeds extract more water from clothes, reducing drying time and saving energy.

Press the Spin button until the desired speed is selected. Some fabrics, such as delicates, require a slower spin speed. To protect your clothing, not all spin speeds are available for all cycles.

Soil

Adjusting the soil level setting will modify the cycle times and/or wash actions. Press the Soil button until the desired soil level is selected.

NOTE: This feature needs more time for heavily soiled loads or less time for lightly soiled loads.

Options

Pressing the Options button will allow you to select additional features, such as Soak, Stain Care, Spin Only, and Rinse+Spin. Pressing the Options button before selecting a cycle will automatically default to the Normal cycle with the Soak feature selected.

OPTIONS

After selecting a cycle, press the Options button to select additional features for your load.

NOTE:

- To protect your garments, not every feature is available with every cycle.
- If the START/PAUSE button is not pressed within 60 minutes to start the cycle, the control will shut off and all settings will be lost.

SOAK

This option provides 30-minutes presoak prior to the start of the selected cycle. Use the SOAK option to presoak garments to help remove difficult spots or stains on fabrics. At the end of the presoak time, the selected cycle will begin with the same water used for the soak.

NOTE: You cannot select the SOAK option in the TUB CLEAN, WATERPROOF, and ALLERGIENE™ cycles or with the STEAM option selected.

STAIN CARE

Use this option for heavily soiled loads that need improved stain treatment. When Stain Care is selected, the wash cycle will begin with warm water to help prevent the setting of certain types of stains. Then, as the cycle progresses, hot water will be added to gradually increase the water temperature to help remove stains that require treatment at higher temperatures.

NOTE:

- Best results are obtained with smaller loads (less than 6 lbs.)
- If you select STAIN CARE, the COLDWASH option is not available.

SPIN ONLY

Use this option to drain the water from the tub and spin out the clothes. This can be used, for example, if the wash cycle is interrupted by a power failure. The spin speed can be adjusted by using the SPIN SPEED button.

1. Press the POWER button to turn on the washer.
2. Press the Options button repeatedly until Spin Only is selected.
3. Press the Spin button to select the desired spin speed. Selecting NO SPIN and EXTRA HIGH are not allowed.
4. Press the START/PAUSE button.

RINSE + SPIN

Select this option to rinse and spin a load separately from a regular cycle. This can be helpful in preventing fresh stains from setting in fabrics. You can change the spin speed by pressing the SPIN SPEED button.

1. Press the POWER button to turn on the washer.
2. Press the Options button until the Rinse+Spin indicator light is lit. (The cycle light will turn off.)
3. Press the START/PAUSE button to start the cycle.

SPECIAL DRAIN FEATURE

This washer is equipped with a special feature that is designed to make your washer as safe as possible. If the washer is paused or shut off while there is still water in the tub, the water will drain automatically after several minutes of inactivity. This helps keep children safe by reducing the possibility of water remaining in the tub.

Any water remaining in the tub will automatically drain 4 minutes after the washer has shut off. If the washer is paused and the START/PAUSE button is not pressed within 60 minutes, the washer will shut off and all cycle settings will be lost. And any water remaining in the tub will be drained.

The washer can be turned on or restarted any time before the drain begins. However, once the washer begins to drain, all controls and functions will be disabled until the water has been completely drained and the washer shuts off.

OPTION BUTTONS

Your washing machine features several additional cycle options that customize cycles to meet your individual needs. To use these options, select the desired option AFTER selecting the desired cycle.

After selecting the desired cycle and settings, press the cycle option button(s) for the option(s) you would like to add. The button will light when that option is selected. If the selected option is not allowed for the selected cycle, the chime will sound twice to alert you and the LED will not illuminate.

NOTE:

- To protect your garments, not every option is available with every cycle.
- If the START/PAUSE button is not pressed within 60 minutes to start the cycle, the control will shut off and all settings will be lost.

STEAM

Adding the Steam option to a wash cycle helps provide superior cleaning performance. By using hot steam, the fabrics will get the cleaning benefits of a very hot wash.

WARNING

- **Do not touch the lid during steam cycles.** The lid surface can become very hot. Allow the lid lock to release before opening the door.
- **Do not attempt to override the lid lock mechanism or reach into the washer during a steam cycle.** Steam can cause severe burns.

NOTE:

- The steam option cannot be used with all cycles.
- The STEAM option is automatically deselected if Turbo Wash™ is selected for the NORMAL, HEAVY DUTY, SANITARY, and BRIGHT WHITE™ cycles.
- Steam may not be clearly visible during the steam cycles. This is normal. Too much steam could damage clothing.
- Do not use steam with delicate fabrics such as wool, silk, or easily discolored fabrics.

COLD WASH

This option saves energy by using cold water while increasing the wash and rinse times to maintain wash performance.

NOTE:

- The Stain Care feature cannot be selected with the Cold Wash option.
- Wash time will increase up to 50% with the Cold Wash option.
- For best wash results, only wash small loads (less than 8 lbs.) with the Cold Wash option.

DELAY WASH

Once you have selected the cycle and other settings, press this button to delay the start of the wash cycle. Each press of the button increases the delay time by 1 hour, for up to 19 hours. Once the desired delay time is set, press the START/PAUSE button to start the delay time.

NOTE: If the START/PAUSE button is not pressed to begin the delay time, the washer will automatically shut off after 60 minutes and all cycle settings will be lost.

CUSTOM PROGRAM (PGM)

Custom Program allows you to store a customized wash cycle for future use. It allows you to save your favorite temperature, spin speed, soil level, and other options for a cycle, and then recall them at the touch of a button. To create a Custom Program:

1. Press the POWER button to turn on the washer.
2. Turn the cycle selector knob to select the desired cycle.
3. Press the cycle modifier button to change the desired setting.
4. Press the cycle option button to add the desired options.
5. Press and hold the Custom PGM button for 3 seconds.

TO RUN A CUSTOM PROGRAM:

1. Press the POWER button to turn on the washer.
2. Briefly press the Custom PGM button. The stored settings will display.
3. Press the START/PAUSE button to start the cycle. (Pressing any other button at this time will cancel the Custom Program.)

NOTE: You may only save one custom program at a time. Pressing and holding the Custom PGM button will overwrite any previously saved custom program.

TURBO WASH™

Adding the Turbo Wash™ option reduces the cycle time while still providing similar wash performance to the same cycle without Turbo Wash™.

NOTE:

- The Turbo Wash™ option cannot be used with all cycles.
- Turbo Wash™ defaults ON for NORMAL, HEAVY DUTY and SPEED WASH cycles.
- Turbo Wash™ is automatically deselected for NORMAL, HEAVY DUTY, BRIGHT WHITES™ and SANITARY cycles if the STEAM option is selected.

FABRIC SOFTENER

The fabric softener is dispensed in the final rinse. Select the Fabric Softener button if you are using fabric softener.

EXTRA RINSE

This option will add an extra rinse to the selected cycle. Use this option to help ensure the removal of detergent or bleach residue from fabrics. Liquid fabric softener, if used, is always dispensed in the final rinse.

NOTE: You cannot select the Extra Rinse option with the Spin Only option and Tub Clean cycle.

WATER PLUS

Use this option if you wish to add more water to your wash load. This option is especially useful for large or bulky loads.

NOTE:

- If the washing machine reaches its maximum water level, the Water Plus button will have no effect.
- You cannot select the Water Plus option in the Tub Clean and Bedding cycles.

SIGNAL

The washing machine plays a melody when the wash cycle has finished. The volume of the melody is adjusted using the Extra Rinse button.

Press and hold the Extra Rinse button for 3 seconds to adjust the volume of the signal. Press and hold the button repeatedly to adjust the volume of the melody. When no signal is heard, the signal is off. The volume settings are LOW – HIGH – OFF. The signal volume can be adjusted at any time as long as the washer is turned ON.

CHILD LOCK

Use this option to disable the controls. This feature can prevent children from changing cycles or operating the machine. Once the Child Lock is set, it must be deactivated before any controls, except the power button, can be used. Once the washer has shut off, the power button will allow the machine to be turned ON, but the controls will still be locked. When the controls are locked, CL will display alternately with the estimated time remaining.

Press and hold the Water Plus button for 3 seconds to activate or deactivate Child Lock.

NOTE: Once the controls are locked, they must be manually unlocked to restore operation.

ADD GARMENT

Laundry may **ONLY** be added to the load at the proper time in the wash cycle. When the Add Garment light is illuminated, it is safe to pause the cycle and add more items to the load. If garments are added when the Add Garment light is off, the washer will not adjust for these items which could result in poor performance and/or fabric damage.

1. Press the START/PAUSE button to pause the washer.
2. Open the lid after it unlocks.
3. Add your additional items.
4. Close the lid.
5. Press the START/PAUSE button. The cycle will resume after the lid locks.