

Post Cover Installation

1) Post covers are 41" tall. Measure up 41" on the post and cut the post to this height. (Fig. 1)

2) If using a 6x6 post, skip ahead to #8.

3) When using a 4x4 post, either fir out the post to 5 1/2 x 5 1/2 or use the optional Converter Kit Rings. 4 pieces per kit. (Fig. 2)

4) Place the bottom ring (marked B), flange down, onto the deck. Pre-drill the four sides and attach the ring to the post using 2" galvanized screws. Use shims to make the ring snug and centered on post. (Fig. 3)

5) Measure up 13" and 26" from the deck. Use a Speed Square to mark a line around the post at these heights. Slide the 2 rings (marked M) to these heights, shim and screw in place as described above. (Fig. 4)

If attaching railings, the following must be done PRIOR to the placement and attachment of the post.

Measure up and mark on the post to the height of the bottom and top rail. Fir out the post on these faces at these heights an additional 1". These will act as the landings for the rail mounts. Use a 3"x3" x1" block. Center the block at the scribed line. (Fig. 5)

Consult local codes for height requirements of rails.

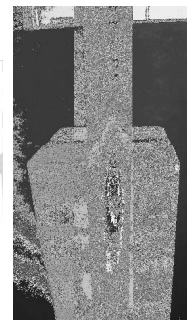
6) Slide the post over the rings, and seat the bottom of the post into the bottom ring. Face screw the post to the rings using 2 1/2" galvanized screws. It is best to screw through the post in a grout line or at the base of a rock. This will make it easier to hide the screws. Measure up 13" and 26" and screw through the rings at this height. (Fig. 6)

7) Place the top ring and seat in the top of the post. Shim to make the post plumb. Screw through the indented areas into the post. (Fig. 7)

8) If using a 6x6 post, simply cut the post to 41", slide the post cover over the post, and secure using 2 1/2" galvanized screws as described in #6 above. Be sure and shim the top of the post to make it plumb before screwing the post cover to the post.



(Fig. 2)



(Fig. 1)



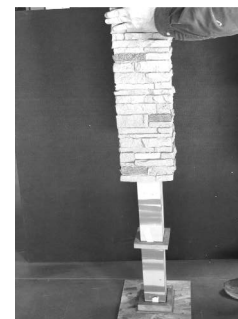
(Fig. 3)



(Fig. 4)



(Fig. 5)



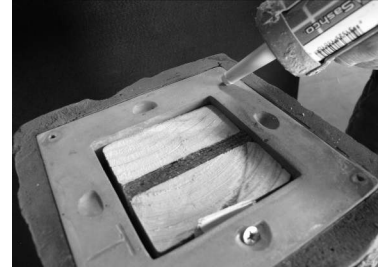
(Fig. 6)



(Fig. 7)

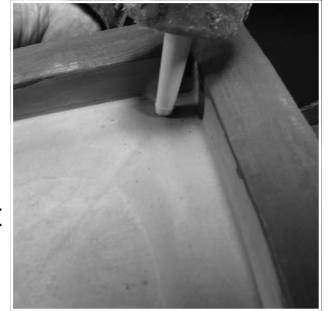
Post Cover install cont.

9) Attaching the Cap. Apply adhesive around the top surface of the post. (Fig. 8) In addition, apply adhesive to the inside top of the cap along the inside ledge. (Fig. 9)

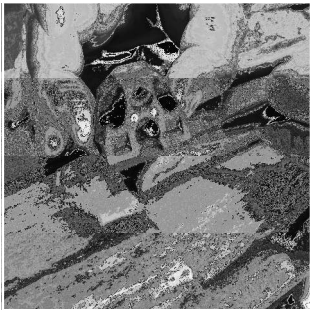


(Fig. 8)

10) Install Rail Mounts. After locating the desired height of the railing and securely attaching the mounts (see #5), measure up on the outside of the post cover, and select the spot to place the landing. In this example Trex™ universal mounts are used. When the landing location is decided, dry fit the landing on the rock surface. Using a carpenter knife or chisel, cut out the high points of the rock surface to achieve a smooth flat surface. (Fig 10-13)



(Fig. 9)



(Fig. 10)



(Fig. 11)



(Fig. 12)



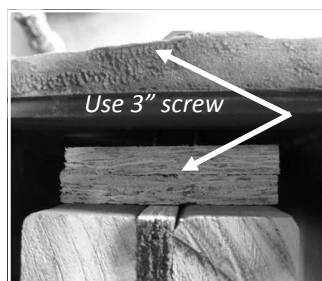
(Fig. 13)

11) Using 3" deck screws minimum, attach the mount to the post, screwing through the pillar into the landing attached in section 5. (Fig. 14-15)

12) Finish the job using NextStone Textured Grout and Paint kit to cover any space around the mountings and to hide screw heads. (Grout and Touch Up Kit sold separately). (Fig. 16)



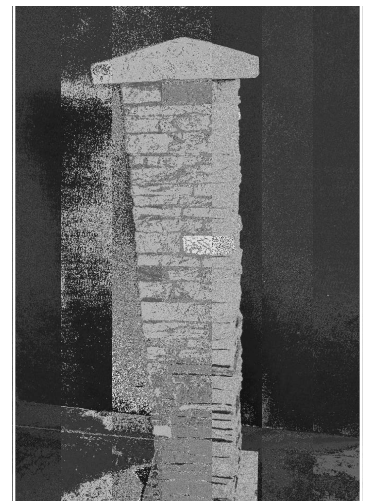
(Fig. 14)



(Fig. 15)



(Fig. 16)



Finished Post and Cap