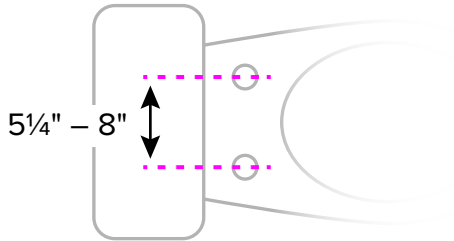


Toilet Fit Guide

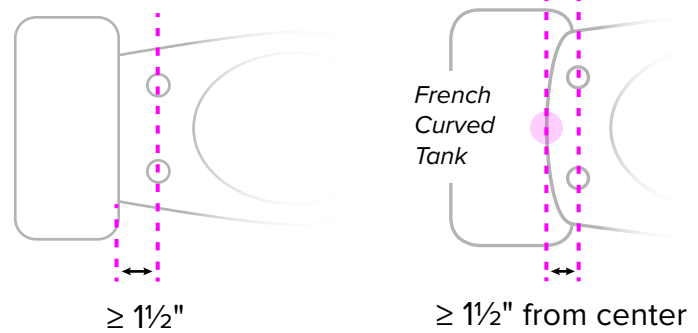
You'll need to measure your toilet to determine:

- Whether a Brondell Swash will fit (the Swash fits most residential toilets)
- Whether you need an Elongated or Round Swash

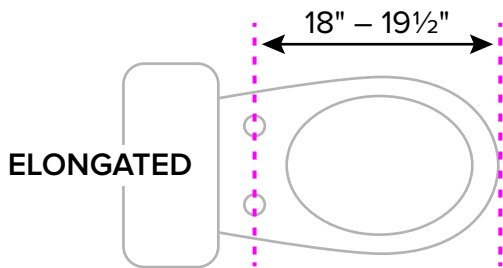
- 1** Measure the distance between the bolt holes to ensure the space is between **5¼ inches and 8 inches**.



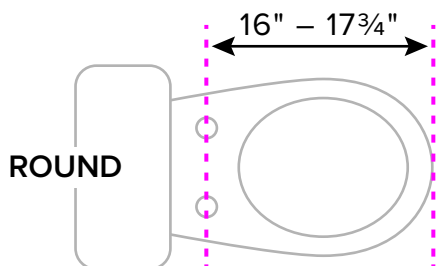
- 2** Measure the distance from the center of the bolt holes to the toilet tank to determine proper clearance. The toilet will need **at least 1½ inches** of clearance.



- 3** Measure the distance from the bolt holes to the front of the toilet bowl to determine if you have a **round or elongated** fixture.



If your measurement is 18" - 19½"
Order an **Elongated Swash**



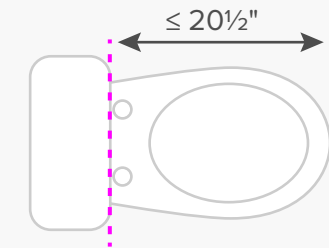
If your measurement is 16" - 17¾"
Order a **Round Swash**

Is the distance from the center of the bolt holes to the toilet tank less than 2"?

The Swash may extend slightly over the front edge of your toilet bowl.



Measure the distance from the front of the toilet tank to the front of the toilet bowl.



If this measurement is less than 20½", consider purchasing a Round size to reduce the amount the seat extends over the front edge, even if your fixture is elongated.

The overall length of the Round Swash is 19.4".
A distance less than 19.4" from the tank to the front of the toilet bowl will also cause overhang.

Do you have an unusual toilet or questions about your measurements?

Please contact Brondell Customer Service at **888-542-3355**, or send us an email at **support@brondell.com** for additional help.

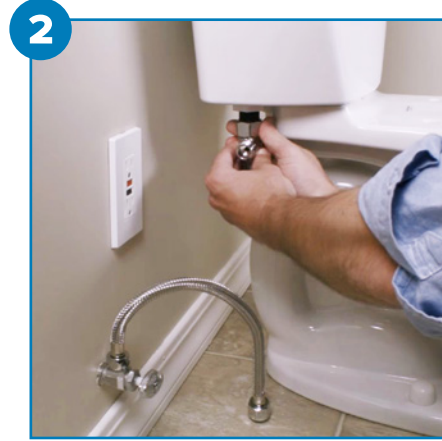
Swash Quick Install Guide

Installs in under an hour with 6 easy steps!

brondell[®]
a healthy home experience



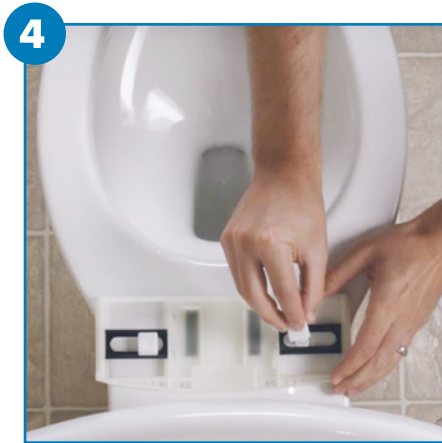
1
Remove your toilet seat & turn off the water



2
Connect the t-valve to the fill valve under your toilet



3
Connect the bidet hose to the t-valve



4
Install the mounting plate and brackets



5
Attach the Swash to the mounting plate



6
Connect the bidet hose to the Swash, turn on the water, plug in the power cord

Having trouble with your installation?

Please contact Brondell Customer Service at **888-542-3355**, or send us an email at support@brondell.com for additional help.