

Mini-Rock Candy Cylinder Wall

HW623_2G 1.0



GENERAL PRODUCT INFORMATION:



This product is suitable for damp locations.

This product can mount either to a 4" square electrical box with a round plaster ring or an octagon electrical box.

This product can be dimmed with a standard incandescent dimmer.

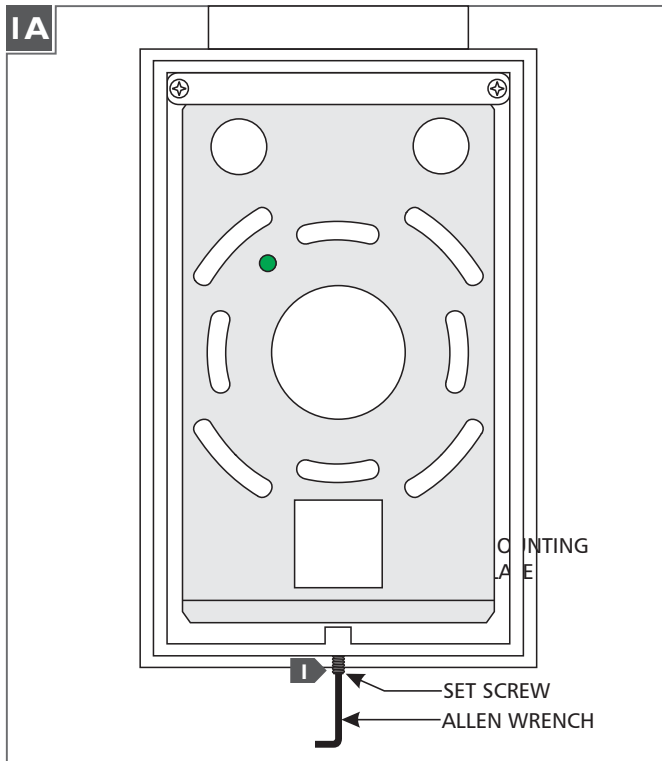
This instruction shows a typical instruction.

CAUTION - RISK OF FIRE

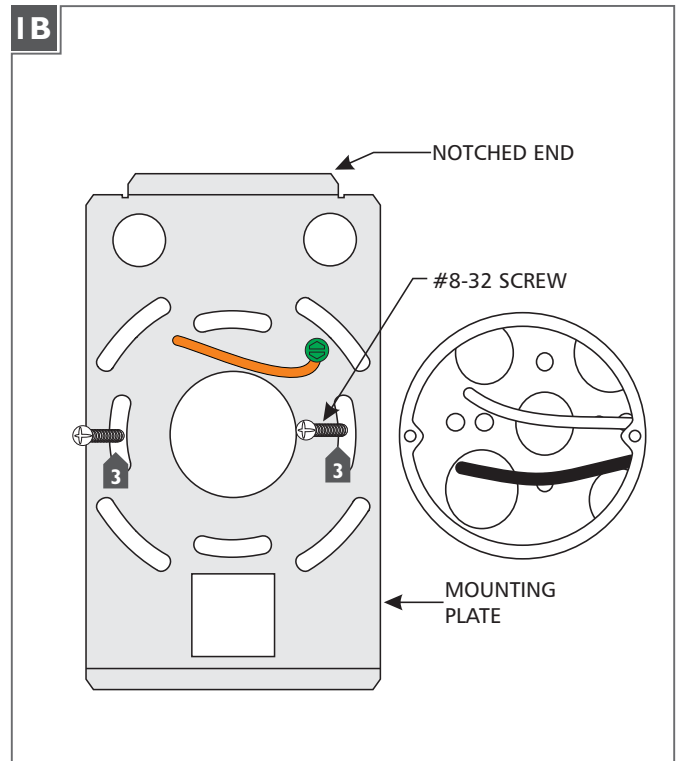
This product requires installation by a qualified electrician. Before installing be sure to read all instructions and **TURN THE POWER TO THE ELECTRICAL BOX OFF.**



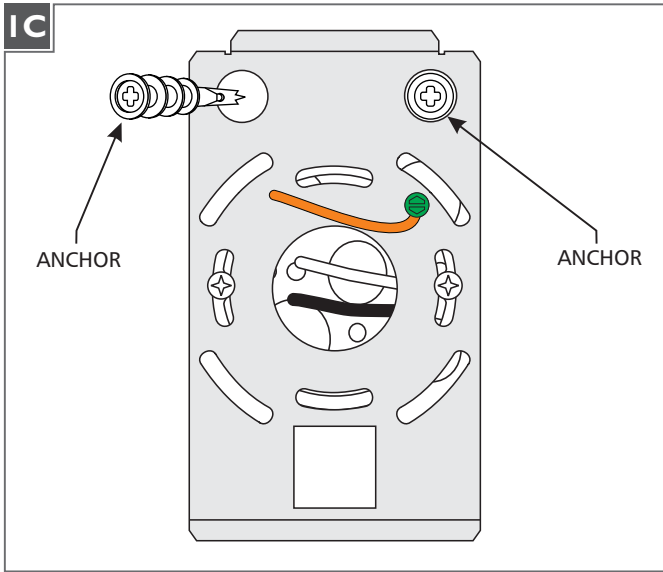
Install the Fixture



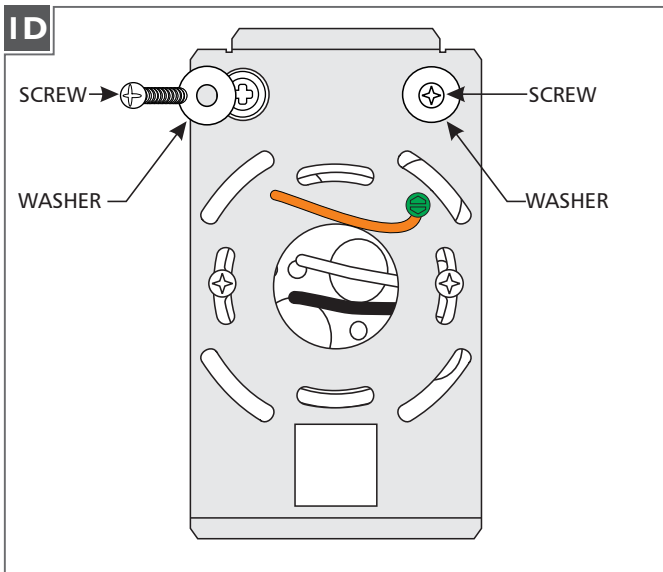
- 1** With the Allen wrench provided, back out (do not fully remove) the set screws at the base of the fixture.
- 2** Remove the mounting plate from the back of the fixture.



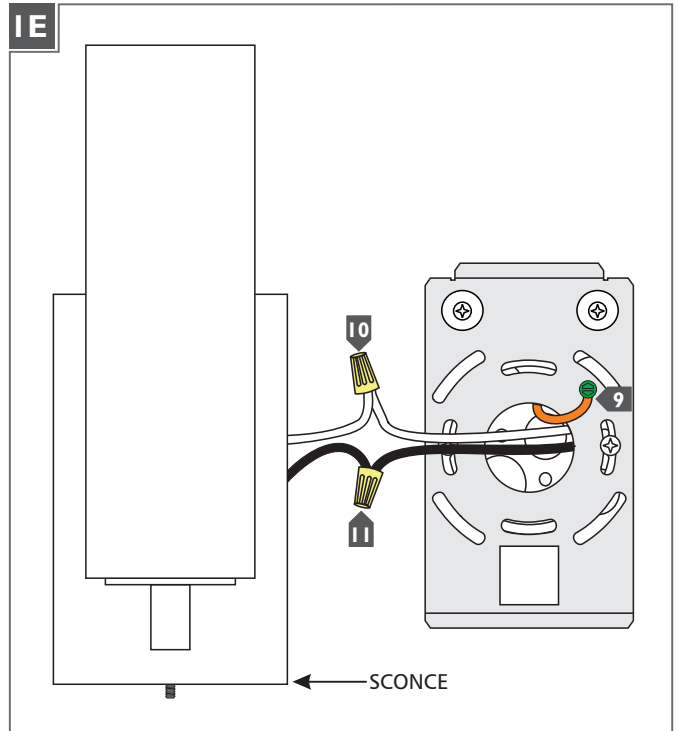
- 3** Attach the mounting plate to the electrical box using the two #8-32 screws provided. Make sure the notched end of the mounting plate is at the top.



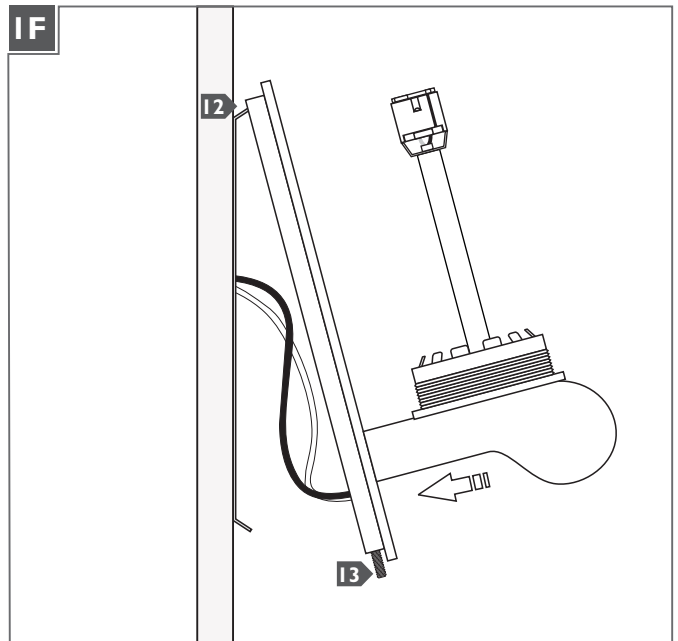
- 4** Verify that the mounting plate is level before continuing.
- 5** Line up an anchor tip with the center of the mounting plate hole and push the anchor into the wall up to the threads.
- 6** Screw the anchors in the rest of the way.
- 7** Repeat steps 4-6 for the other anchor.



- 8** Slide a #8 screw through a washer and screw it into an anchor. Repeat for the other anchor to secure the mounting plate to the wall.

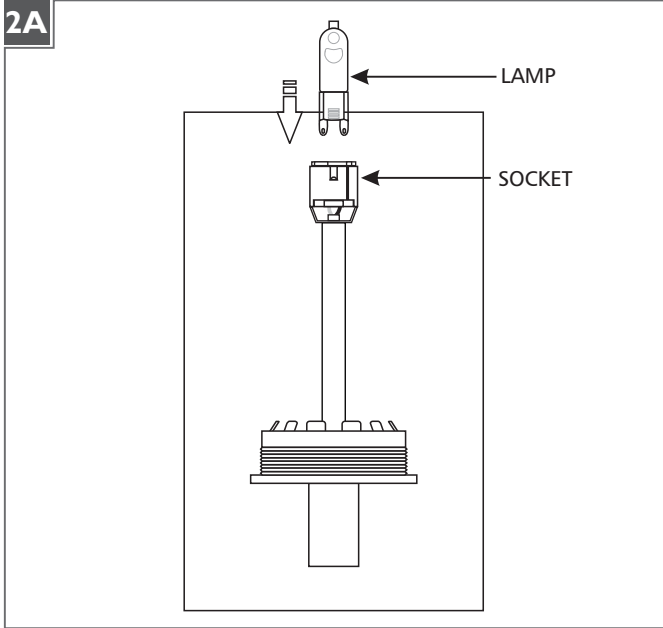


- 9** Connect the mounting plate ground wire to a suitable ground in accordance to local electrical codes.
- 10** Connect the white fixture wire to the neutral power line wire with a wire nut.
- 11** Connect the black fixture wire to the hot power line wire with a wire nut.



- 12** Hook the top of the scence to the top of the mounting plate and swing the bottom of the scence toward the plate until it is flush with the wall.
- 13** Tighten the set screw at the bottom of the scence to secure it to the mounting plate.

Install the Lamp and Shades



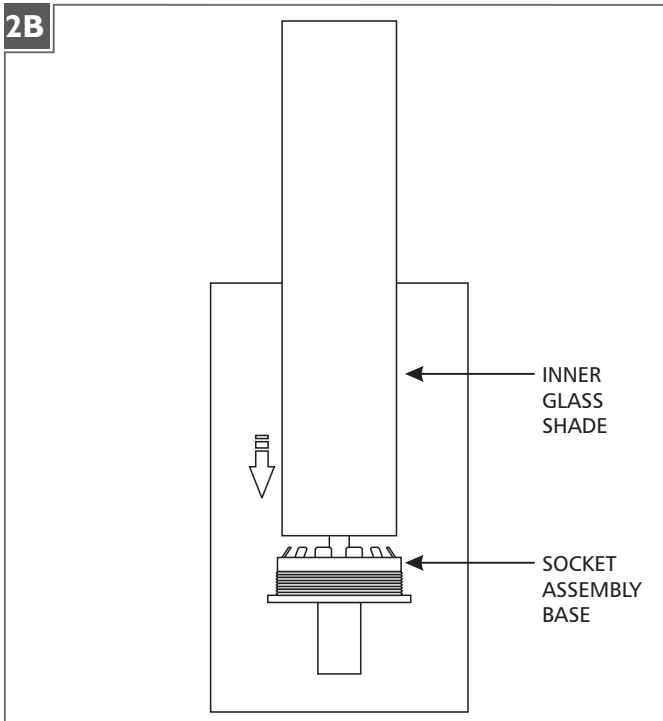
CAUTION: To reduce the risk of a burn or electric shock during relamping, disconnect the power to the fixture.

Use **MAX 120 Volt, 60 Watt** type T4, G9 base bi-pin halogen lamp in each socket.

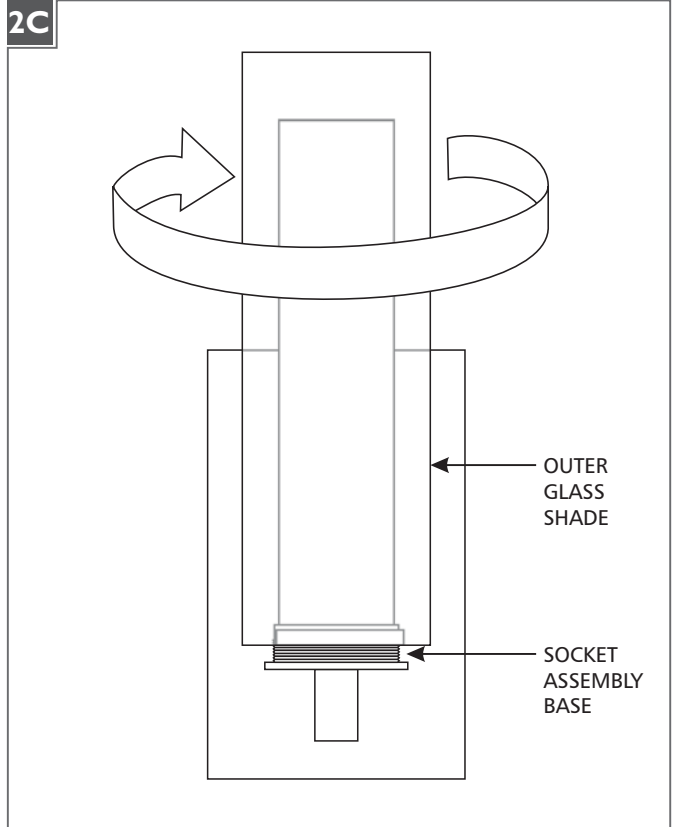


NOTE: Use only your fingers and a soft cloth to replace the lamp.

1 Push the lamp base completely into the socket.



2 Gently push the inner glass shade into the center of the socket assembly base until it is firmly in place.



3 Carefully screw the outer glass shade onto the socket assembly base until it is firmly in place.

NOTE: To re-lamp, reverse the section 2 instructions.

SAVE THESE INSTRUCTIONS!

LBL

7400 Linder Ave, Skokie, IL 60077
800.323.3226 - 847.626.6300

www.lblighting.com

© 2012 LBL Lighting. All rights reserved. The "LBL Lighting" graphic is a registered trademark of LBL Lighting. LBL Lighting reserves the right to change specifications for product improvements without notification.

A Generation Brands Company