

THE SMITHSON
COMPANY, INC.

POLYNICHE INSTALLATION

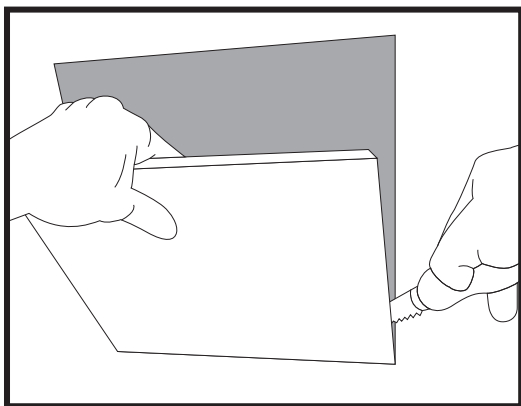
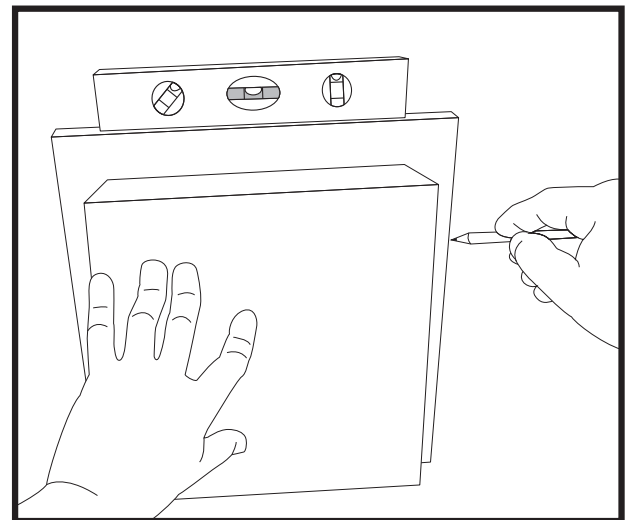
PREPARATION: To ensure proper installation clear work area of all debris, dirt, and dust. PolyNiche location must be determined according to stud location, and wallboard must be installed.

MATERIALS: Non-corrosive construction screws, 1"x4" wood strips and mesh tape.

APPLICATION: The 1"x4" wood strips used may be pressure treated. All thinset used during installation of PolyNiche must be polymer modified thinset.

CURING: There is no cure time limitation with the wood strips. Once PolyNiche is installed the mesh tape can be applied along with the modified thinset. Waterproof Membrane may then be applied over cured mesh tape and modified thinset.

1) Find desired location to install PolyNiche, make sure the location will be clear of obstacles once wall is cut open so PolyNiche will fit properly. Place PolyNiche flat against the wall where cutout is to be made, with open side facing the wallboard. Place a small level on the top side of PolyNiche to ensure a level and plumb cut. Next, trace the 4 outer perimeter sides of PolyNiche, then remove it from the wall.



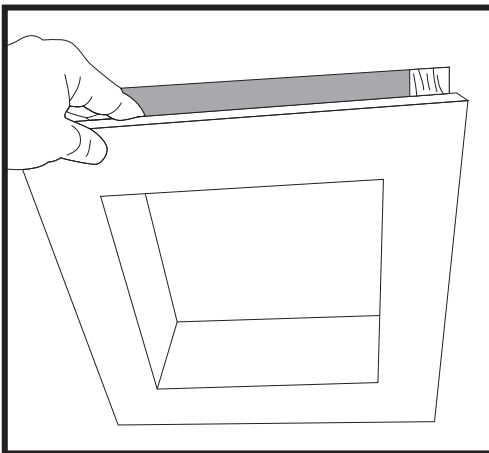
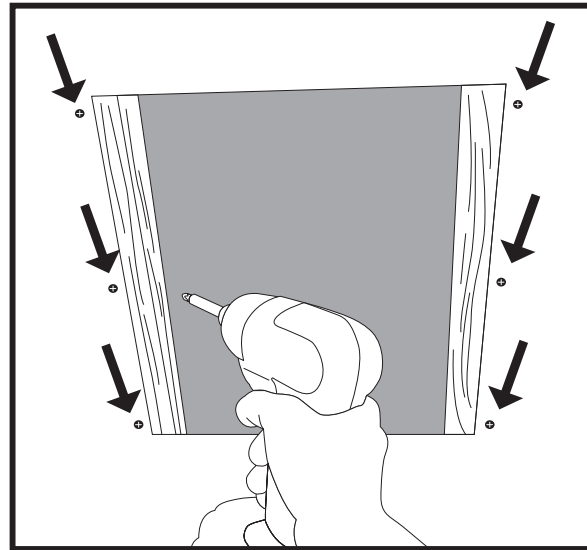
2) Cut along the lines that were traced from step 1. Use a keyhole, hand or jig saw to make the cut into the wallboard. Once the wallboard is cut, remove the loose center section.

THE SMITHSON COMPANY, INC.

561.312.4088 | INFO@SMITHSONCOMPANY.COM | SMITHSONCOMPANY.COM
125 S. STATE RD. 7 | SUITE 104-174 | WELLINGTON, FL 33414

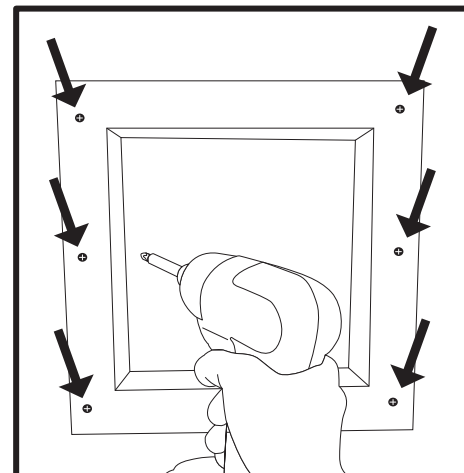
Smithson it's logo, *PolyNiche* it's logo are registered trademarks of The Smithson Company, Inc. PolyNiche is Patent Pending. Copyright 2014, Made in USA.

3. Cut 2 wood supports to be installed vertically in the opening made from step 2. Cut wood supports 4 inches longer than the vertical opening measurement. Once cut, place the wood supports on the backside of the wallboard centered in the opening, with half of the wood support exposed to the opening. Secure wood supports in the wallboard using non-corrosive screws, which are to be approx 6" apart on both vertical sides of the opening.

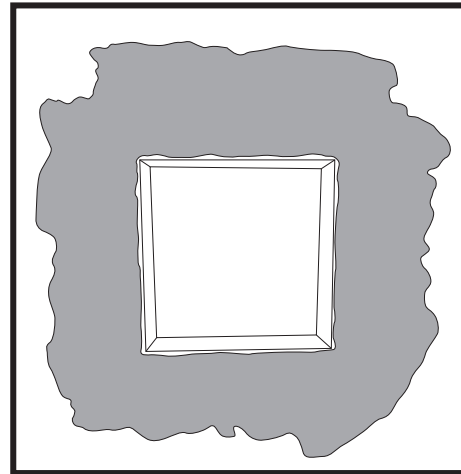
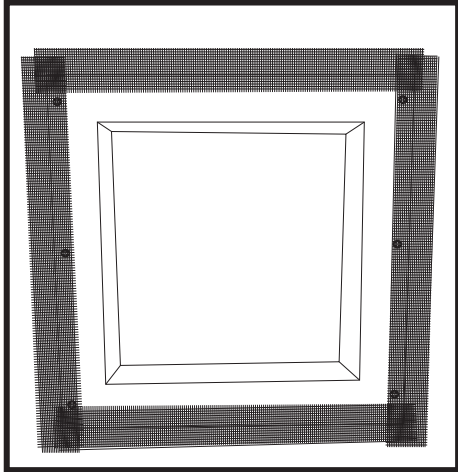


4. Place PolyNiche into the wall with the opening side facing out. Gently push PolyNiche into position until the frame of PolyNiche sits flat against the vertical wood supports. PolyNiche should now be flush with the 1/2" wallboard.

5. Ensure PolyNiche is flush with the 1/2" wallboard, and sitting flat against the vertical wood supports. Using non-corrosive screws, secure PolyNiche in place with the fasteners, which should be approx 6" apart.



6. Remove any debris and ensure PolyNiche and wallboard are clean. Apply drywall mesh tape over all seams where PolyNiche meets the wallboard. Secure mesh tape in place by pressing it in place with a trowel.



7. Apply a skim coat of Polymer Modified Thinset over the mesh tape to secure the joint between PolyNiche, and the wallboard. Flash out thinset if necessary. Once the thinset is cured, a coat of waterproof membrane may be rolled or brush on.

YOUR POLYNICHE IS READY TO BE TILED!

THE SMITHSON COMPANY, INC.

561.312.4088 | INFO@SMITHSONCOMPANY.COM | SMITHSONCOMPANY.COM
125 S. STATE RD. 7 | SUITE 104-174 | WELLINGTON, FL 33414

*Smithson® it's logo, *PolyNiche® it's logo are registered trademarks of The Smithson Company, Inc. PolyNiche is Patent Pending. Copyright 2014, Made in USA.