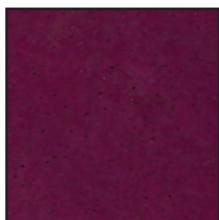




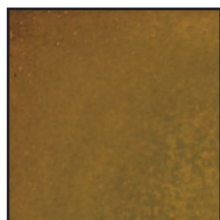
# EAGLE

## INTERIOR CONCRETE DYE

**INTERIOR CONCRETE DYE** is a penetrating dye that adds color to existing interior concrete. This coloring method provides an elegant decorative appearance without the harsh chemicals or tedious and expensive process of acid-based chemical staining. Beginning with a properly prepared surface, **INTERIOR CONCRETE DYE** can be applied and sealed in as little as one day, minimizing down-time. Nano-particles allow the color to penetrate the concrete, resulting in a durable treatment that will not wear away with traffic. Seal with Eagle **ARMOR SEAL**.



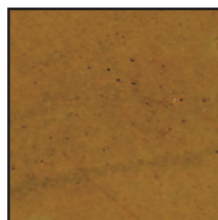
POMEGRANATE



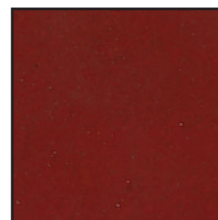
PINEAPPLE



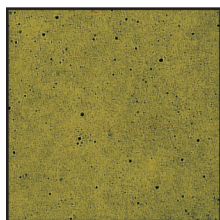
BLACK ORCHID



WARM HONEY



RHUBARB



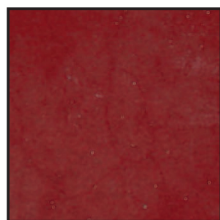
DANDELION



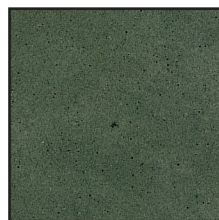
COLA



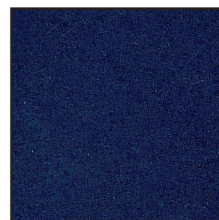
MALT BROWN



RED BERRY



THISTLE GREEN



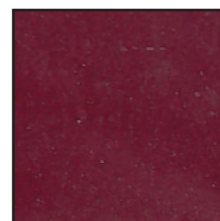
BLUEBERRY



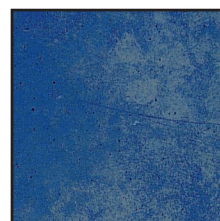
ROOT BEER



SWEET POTATO



VIOLET



BLUE POPPY



MAPLE SYRUP



ROAST PEPPER

★ Interior concrete ★ Overlay toppings ★ Stencil designs ★ Acid stain repair ★ Acid stain accent

**Mixes Instantly Into Solution ★ No Additional Mottling Agent Required**

# INTERIOR DYE

## TOOLS & MATERIALS REQUIRED

- ★ Pump-up sprayer with conical tip
- ★ Painter's masking tape and plastic sheeting
- ★ Synthetic bristle brush
- ★ Clean water for cleaning equipment
- ★ White buffing pad and tack cloth
- ★ EAGLE ETCH & CLEAN
- ★ EAGLE CLEANER DEGREASER & NEUTRALIZER
- ★ EAGLE ARMOR SEAL
- ★ EAGLE CONCRETE POLISH

## TEST BEFORE PROCEEDING

Test an inconspicuous area to be sure that concrete accepts stain and color meets expectation before proceeding. Test for water seep by taping plastic on one square foot of floor. Remove plastic the following day. If floor is wet, you should not stain and seal floor.

## SURFACE PREPARATION

All walls, furniture, columns, or other items/areas that you do not want to color should be masked using painter's tape and plastic sheeting. This will protect the items from overspray. Concrete should be cured and clean, free of dirt, dust, residue and oil. Pre-etch with EAGLE ETCH & CLEAN until concrete readily absorbs water. Dense concrete surfaces may require mechanical preparation to accept dye. For oily surfaces, EAGLE CLEANER DEGREASER & NEUTRALIZER is recommended. Scrub surface with clean water and remove excess. Allow to dry 24 hours.

## APPLICATION

EAGLE INTERIOR CONCRETE DYE concentrate should be transferred into a 1-gallon sprayer. Use clean water to rinse the residue from the concentrate bottle into the 1-gallon container. Repeat this step until all EAGLE INTERIOR CONCRETE DYE is out of the bottle. Add clean water to a final volume of 1 gallon. To use larger capacity sprayers, adjust volumes. Always do a test spot in an inconspicuous area before proceeding with the project. Apply with a pump-up sprayer using a conical, fine-spray tip. Small areas can be brushed using a circular motion to avoid brush strokes. Take care to maintain a wet edge to avoid bleed lines. Do not apply more material than the surface will absorb in 1 minute. If not using a drip-less sprayer, tape a piece of cloth or a small container to the sprayer body to catch drips while not spraying the material. Place the tip of the spray wand on the cloth or into the small container immediately after releasing the spray handle. Apply the dye uniformly to obtain a more uniform final appearance. Apply in a random, circular motion with some overlapping to generate a more mottled look that more closely resembles acid stain. Colors may be blended to produce an infinite palette or applied over a base color for a unique look. Depending on the depth of color that is desired, more than one application may be required. Use clean water to rinse the sprayer between color changes. Keep a container of clean water available and place the end of the sprayer wand into it between applications to keep the tip from becoming clogged.

## COVERAGE RATE

Approximately 200-400 square feet per gallon, depending on porosity and depth of color desired.

## SEALING

The surface must be sealed with a clear concrete sealer to lock in and protect the color. If dye residue is present, remove with white buffing pad and tack cloth. Do not use water. A light initial coat of sealer should be applied to the dyed surface with a pump sprayer to "lock in" the dye. After applying dye, wait 4 hours to start sealing with EAGLE ARMOR SEAL and 8 hours for solvent based sealer. If using acetone based dye, you can seal immediately. For ongoing maintenance, clean with water only and use EAGLE CONCRETE POLISH for ongoing scuff protection and maintenance. Apply 2-3 coats initially per the label's instructions, and touch-up periodically as a regular maintenance routine.

## TECHNICAL DATA

VOC: <15 g/L  
Flash Point: 150°

Health  
Reactivity

## HMIS

1	Flammability	2
0	Protection	B

**DISCLAIMER:** Since manufacturer has no control over handling, use or storage; no guarantee expressed or implied, is offered. Eagle IFP warrants the product to be free of defects and will replace or refund the purchase price of said products proven defective. Labor cost and/or other consequential damages are not covered by this warranty. Responsibility for claims of any kind is strictly limited to the purchase price of the product. The suitability of the product for any extended use shall be solely up to the user.

Made in U.S.A

**EAGLE IFP COMPANY**

[www.eaglesealer.com](http://www.eaglesealer.com)