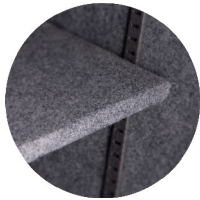
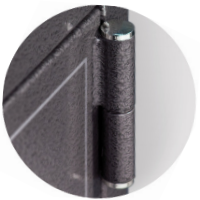
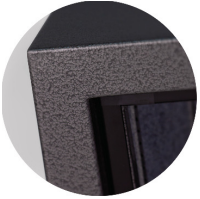


MBF1512E

MBF SERIES BURGLARY & FIRE SAFES



SAFE SPECIFICATIONS

EXTERIOR [HWD]	INTERIOR [HWD]	INTERIOR [CU.FT.]	SHELVING [NO.]	WEIGHT
20" x 17 1/4" x 18 3/4"	16 1/2" x 14 1/4" x 12 1/2"	1.7	1	139 lbs

SAFE FEATURES

BODY & DOOR

- All steel construction
- 2 hour 350°F fire rating [Tested in temperatures up to 1830°F]
- Body has an overall thickness of 1 1/4" consisting of a steel plate lined with fire-resistant material
- Door has an overall thickness of 4" lined with fire-resistant material
- Heavy-duty solid steel hinges

LOCK

- Lock protected by a drill resistant hard plate & punch-activated relocking system
- Low battery warning
- Multiple invalid code defense feature
- Battery operated electronic lock [9V Battery included]

- Massive 1" diameter solid steel locking bolts & deadbolts
- 2 story impact rating, factory tested
- Fully upholstered interior
- High-strength adjustable shelving
- Heat-activated seal
- 4 pre-drilled anchor holes [Anchor kit included]

LOCK OPTIONS

- Advanced Electronic Lock [Standard]
- U.L. Listed Group II Combination Lock [Optional]